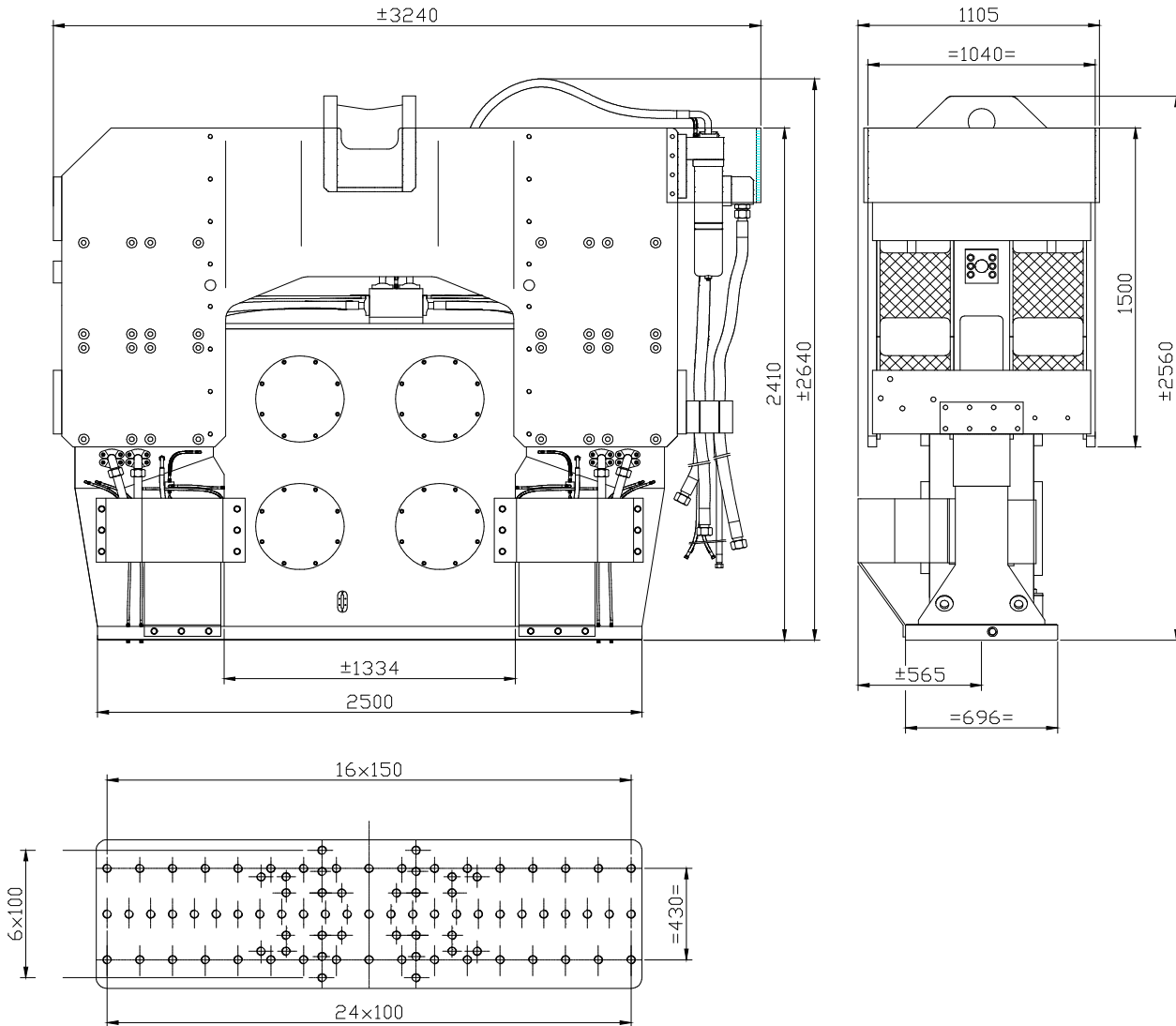




# Specification sheet

## PVE 110M

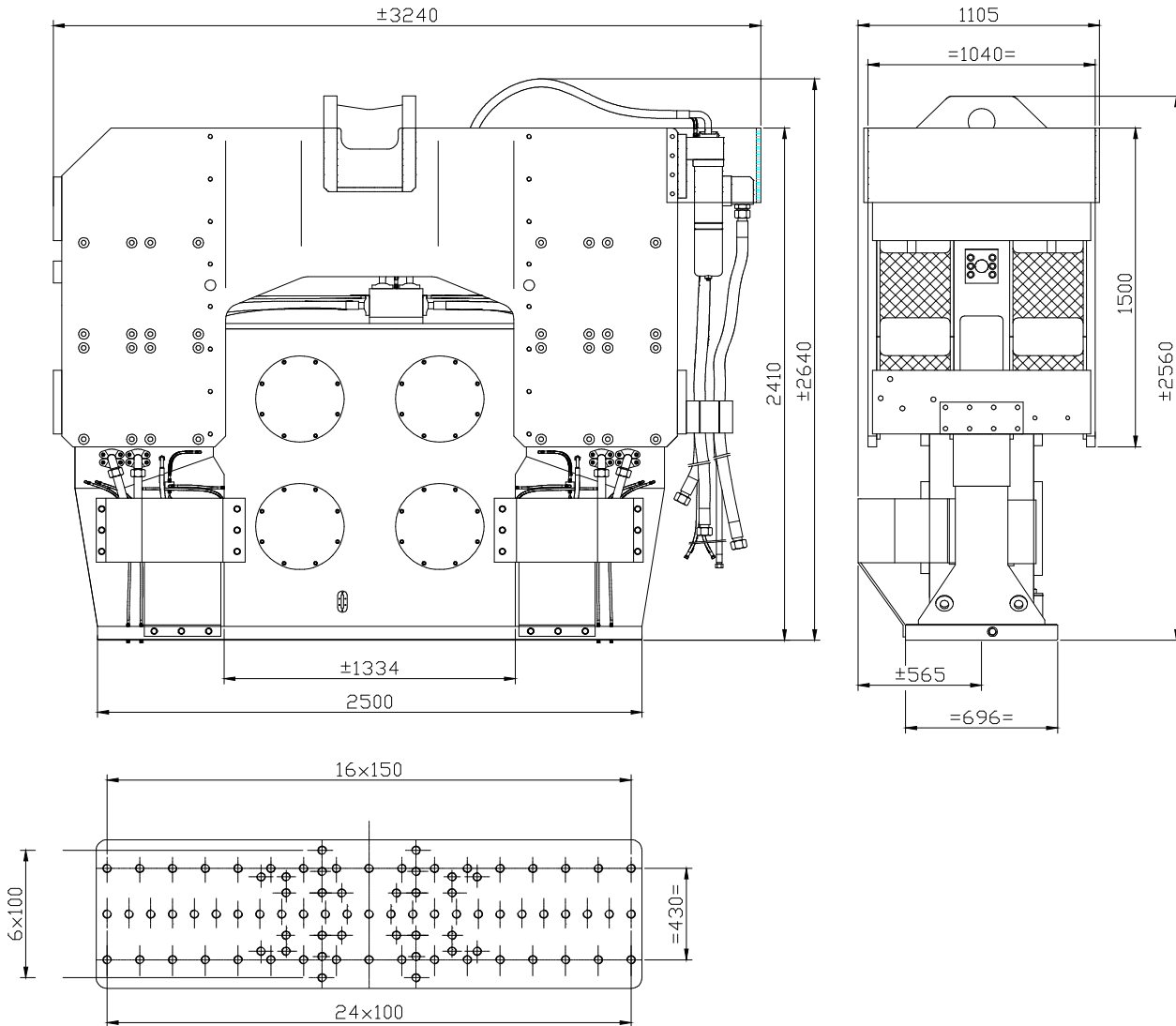
### Vibro Hammer



### Specifications :

### PVE 110M

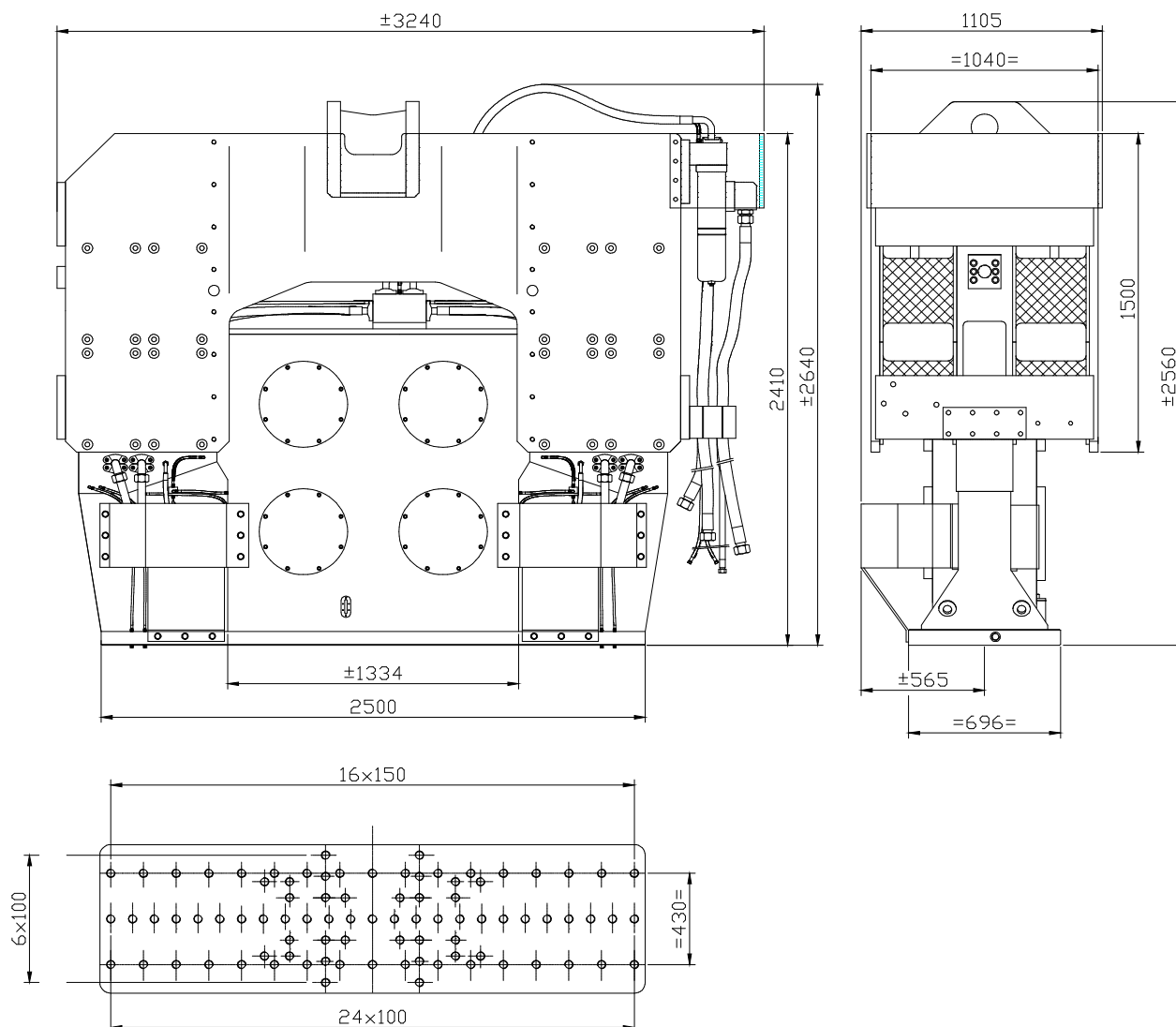
Eccentric moment	110 kgm	<b>Clamps:</b>	
Max. centrifugal force	2198 kN	Sheet pile clamp	DWK 350T
Max. frequency	1350 rpm	Transport weight per piece	2600 kg
Max. amplitude excl. DWK 350T	31 mm	Double clamps	PPK 150T
Max. amplitude incl. DWK 350T	22.9 mm	Transport weight per piece	1300 kg
Max. static line-pull	1200 kN		
Max. operating pressure	350 bar	<b>Powerpack:</b>	
Max. oil flow	956 l/min	Model	1000 series
Forced lubrication	yes		
Dynamic weight excl. DWK 350T	7000 kg	<b>Hose set:</b>	
Dynamic weight incl. DWK 350T	9600 kg	Length	45 m
Total weight excl. DWK 350T & hoses	12000 kg	Transport weight (±)	1761 kg



### Technische Daten :

### PVE 110M

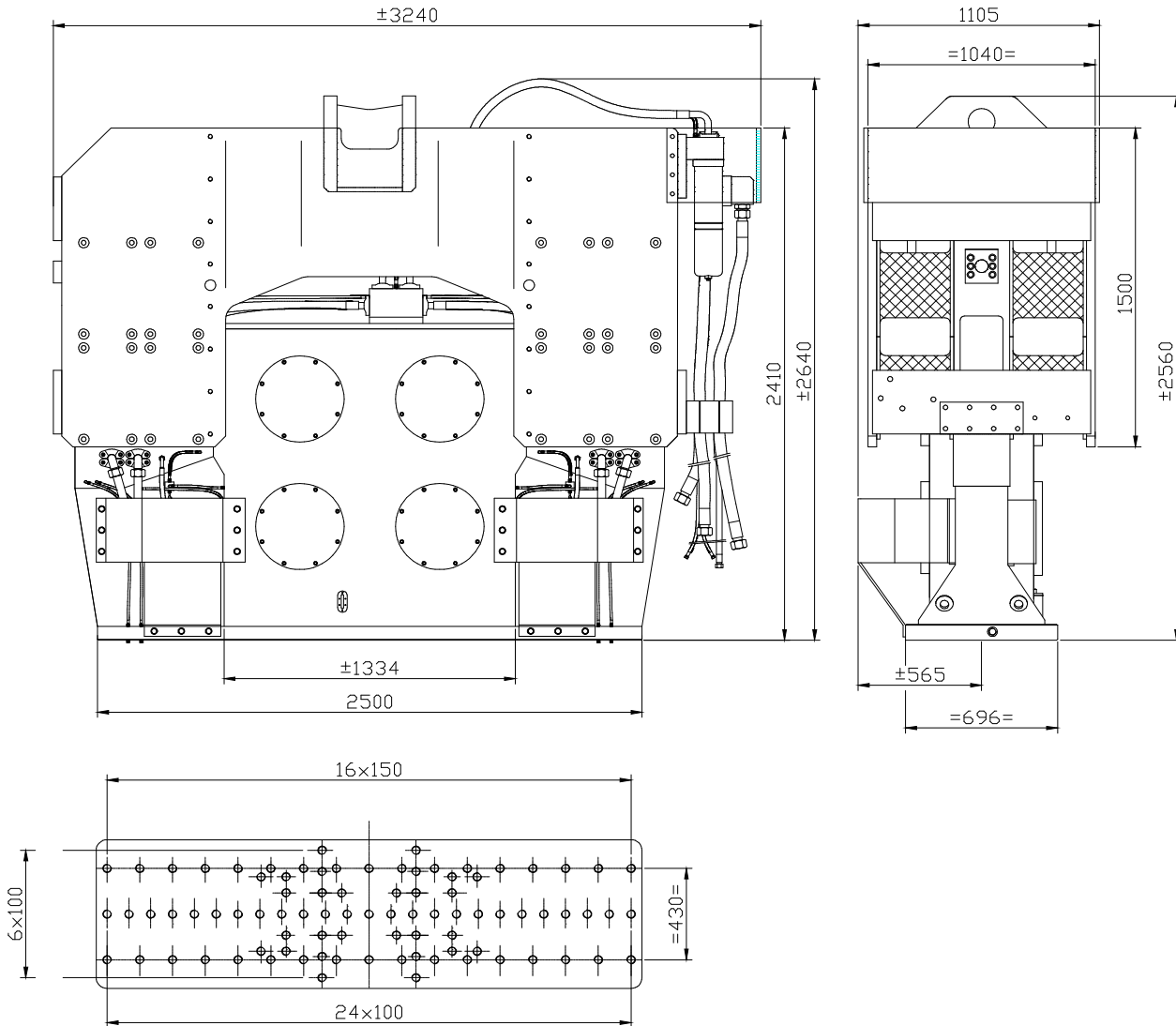
Statisches Moment	110 kgm	<b>Klemmzange:</b>	
Max. Fliehkraft	2198 kN	Universalzange	DWK 350T
Max. Drehzahl	1350 rpm	Transportgew. pro Stück	2600 kg
Max. Amplitude ohne DWK 350T	31 mm	Rohrklemmzange	PPK 150T
Max. Amplitude mit DWK 350T	22.9 mm	Transportgew. pro Stück	1300 kg
Max. Statische Zugkraft	1200 kN		
Max. Betriebsdruck	350 bar	<b>Aggregat:</b>	
Max. Fördermenge	956 l/min	Modell	1000 series
Zwangsschmierung	ja		
Dyn. Gewicht ohne DWK 350T	7000 kg	<b>Schlauchsatz:</b>	
Dyn. Gewicht mit DWK 350T	9600 kg	Länge	45 m
Gesamtgew. Ohne DWK 350T & Schläuche	12000 kg	Transportgewicht (±)	1761 kg



### Spécifications

### PVE 110M

Moment excentrique	110 kgm	<b>Pinces:</b>	
Max. force centrifuge	2198 kN	Pince palplanche	DWK 350T
Max. fréquence	1350 rpm	Poids de transport par pièce	2600 kg
Max. amplitude sans DWK 350T	31 mm	Pince tube	PPK 150T
Max. amplitude avec DWK 350T	22.9 mm	Poids de transport par pièce	1300 kg
Force de traction statique	1200 kN		
Pression de travail max.	350 bar	<b>Groupe hydraulique:</b>	
Débit d'huile max.	956 l/min	Modèle	1000 series
Huile lubrifiante	oui		
Poids dynamique sans DWK 350T	7000 kg	<b>Jeu de tuyau:</b>	
Poids dynamique avec DWK 350T	9600 kg	Longueur	45 m
Poids total sans DWK 350T & tuyaux	12000 kg	Poids de transport (±)	1761 kg



### Specificaties

### PVE 110M

Excentrisch moment	110 kgm	<b>Klemmen:</b>	
Max. centrifugaalkracht	2198 kN	Damwandklem	DWK 350T
Max. toerental	1350 rpm	Transportgewicht per klem	2600 kg
Max. amplitude excl. DWK 350T	31 mm	Pijpenklem	PPK 150T
Max. amplitude incl. DWK 350T	22.9 mm	Transportgewicht per klem	1300 kg
Max. statische trekkracht	1200 kN		
Max. werkdruk	350 bar	<b>Aggregaat:</b>	
Max. oliedoorstroming	956 l/min	Model	1000 series
Geforceerde smering	ja		
Dynamisch gewicht excl. DWK 350T	7000 kg	<b>Slangenset:</b>	
Dynamisch gewicht incl. DWK 350T	9600 kg	Lengte	45 m
Totaalgewicht excl. DWK 350T & slangen	12000 kg	Transportgewicht (±)	1761 kg



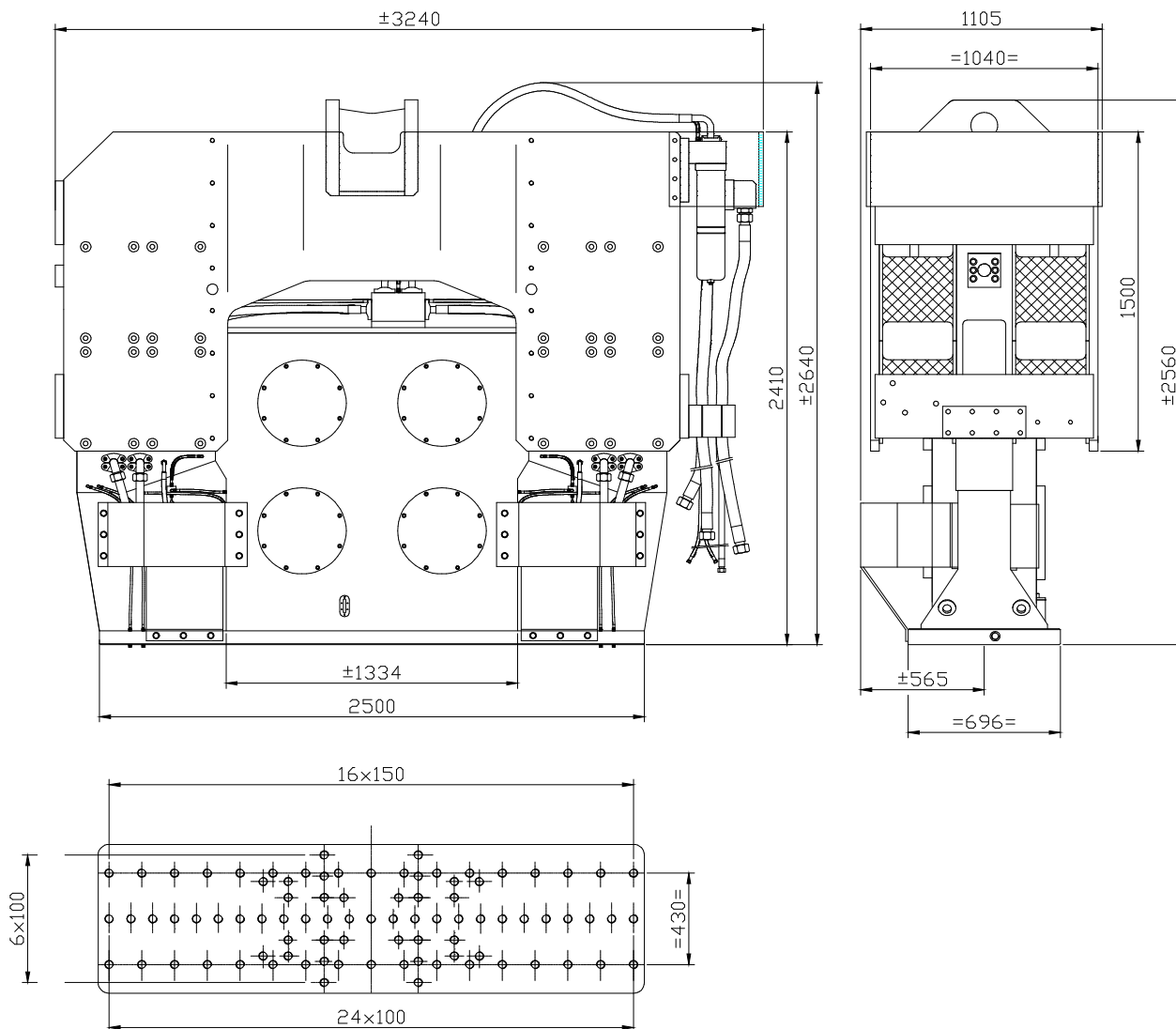


# Specificatii

## PVE 110M

Ciocan vibrator

Español



### Specificatii

### PVE 110M

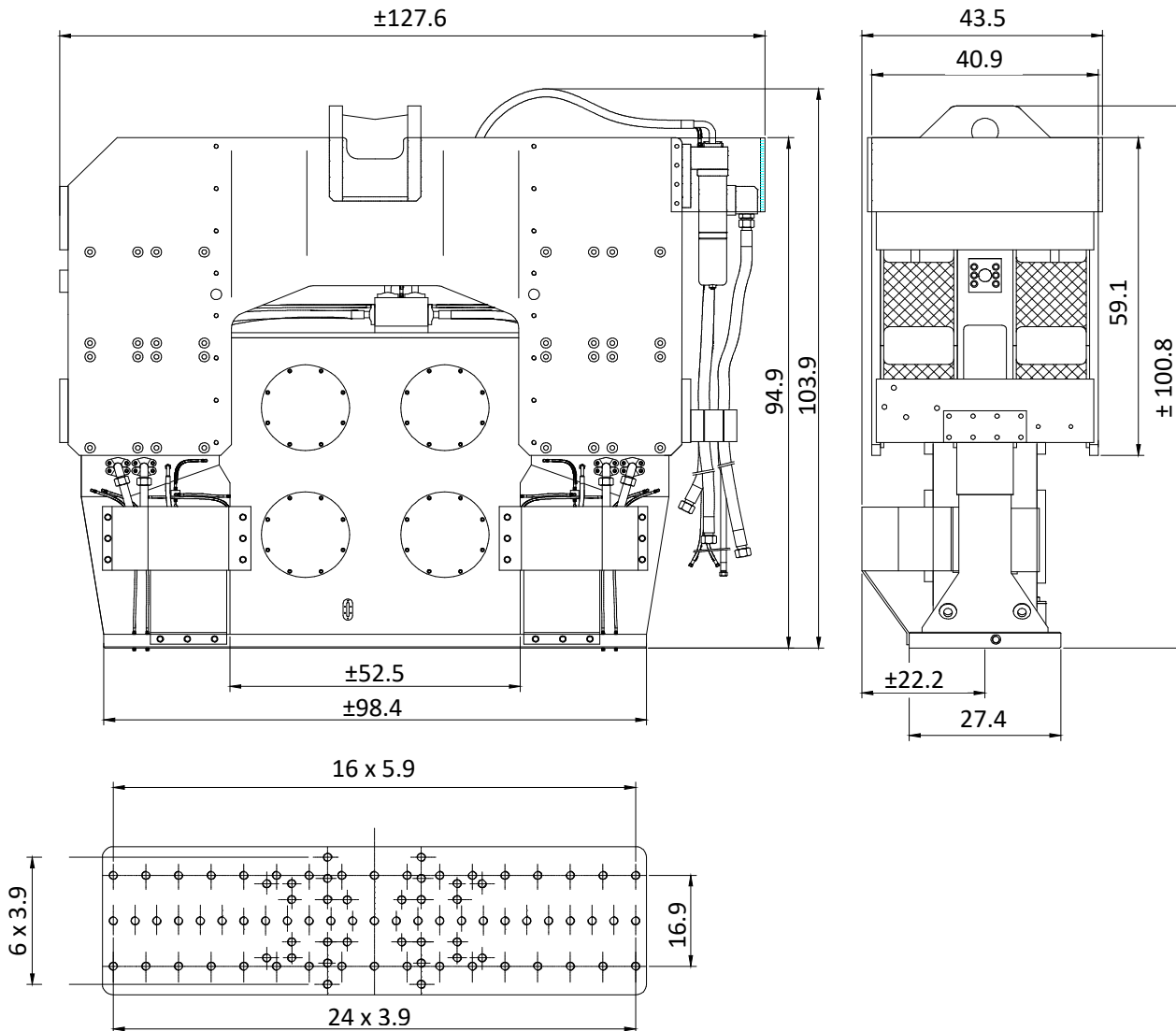
Moment excentric	110 kgm	<b>Menghina:</b>	
Forta centrifuga maxima	2198 kN	Menghina pentru palplanse	DWK 350T
Frecventa maxima	1350 rpm	Greutatea transportului pe buc.	2600 kg
Amplitudinea maxima exclusiva DWK 350T	31 mm	Menghina dubla	PPK 150T
Amplitudinea maxima inclusiv DWK 350T	22.9 mm	Greutatea transportului pe buc.	1300 kg
Tractiune statica maxima	1200 kN		
Presiunea maxima de lucru	350 bar	<b>Unitate de putere:</b>	
Debit maxim de ulei	956 l/min	Model	1000 series
Ungere fortata	da		
Greutate dinamica exclusiv DWK 350T	7000 kg	<b>Set furtun:</b>	
Greutate dinamica inclusiv DWK 350T	9600 kg	Lungime	45 m
Greutate totala cu furtun atasat DWK 350T	12000 kg	Greutatea transportului	1761 kg



# Specifications

## PVE 110M

### Vibro Hammer



### Specifications

### PVE 110M

Eccentric moment	0-9548.6 lbs in	<b>Clamps:</b>	
Max. centrifugal force	0-247.1 US tn	Sheet pile clamp	DWK 350T
Max. frequency	1350 rpm	Transport weight per piece	5732 lbs
Max. amplitude excluding DWK 350T	1.22 in	Double clamps	PPK 150T
Max. amplitude including DWK 350T	0.90 in	Transport weight per piece	2866 lbs
Max. static line-pull	122.4 US tn		
Max. operating pressure	5076 psi	<b>Powerpack:</b>	
Max. oil flow	253 gal/min	Model	1000 series
Forced lubrication	yes		
Dynamic weight excluding DWK 350T	15432 lbs	<b>Hose set:</b>	
Dynamic weight including DWK 350T	21164 lbs	Length	148 ft
Total weight excluding DWK 350T & hoses	26455 lbs	Transport weight (±)	3882 lbs