

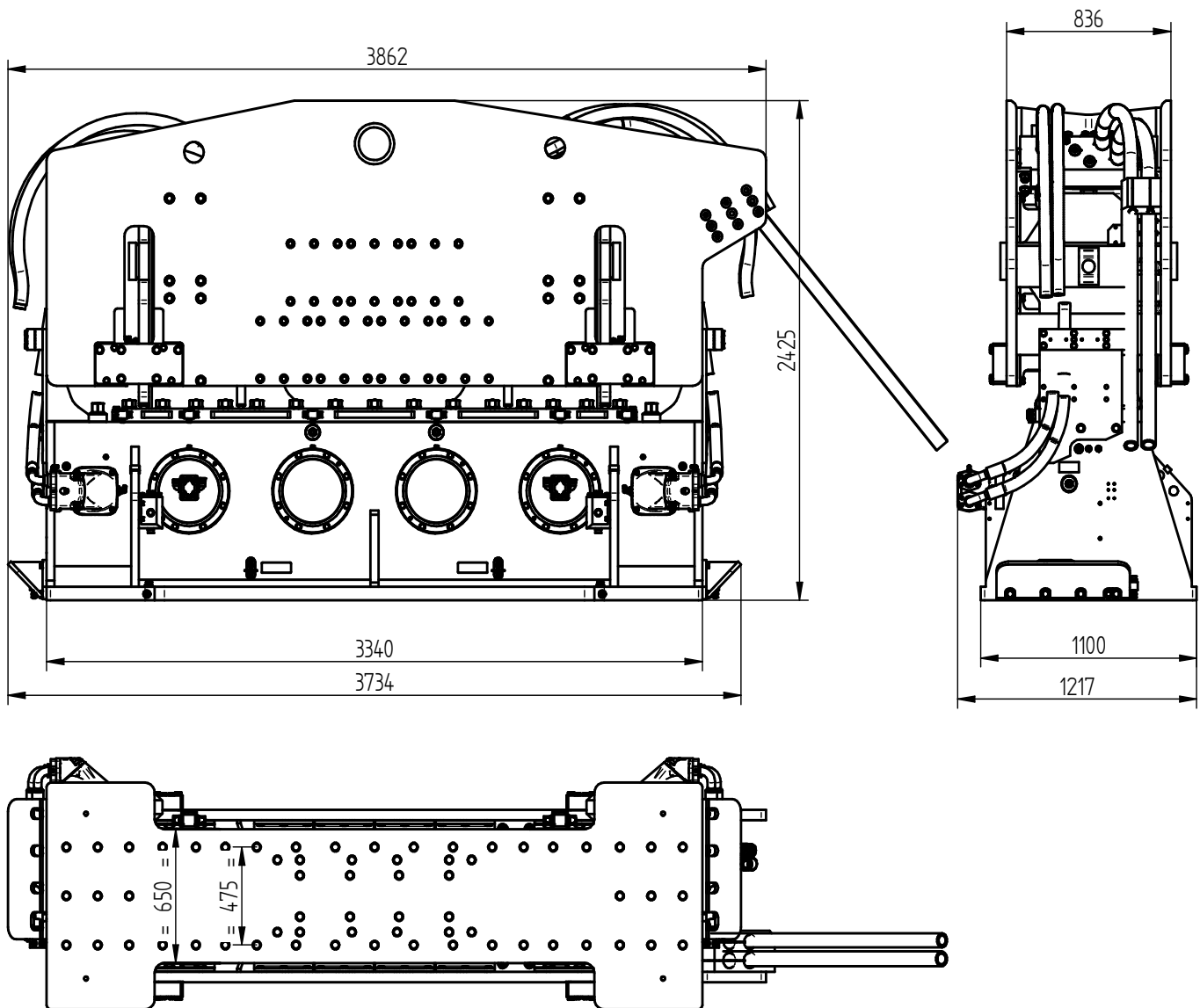


# Specification sheet

## PVE 130M

### Vibro Hammer

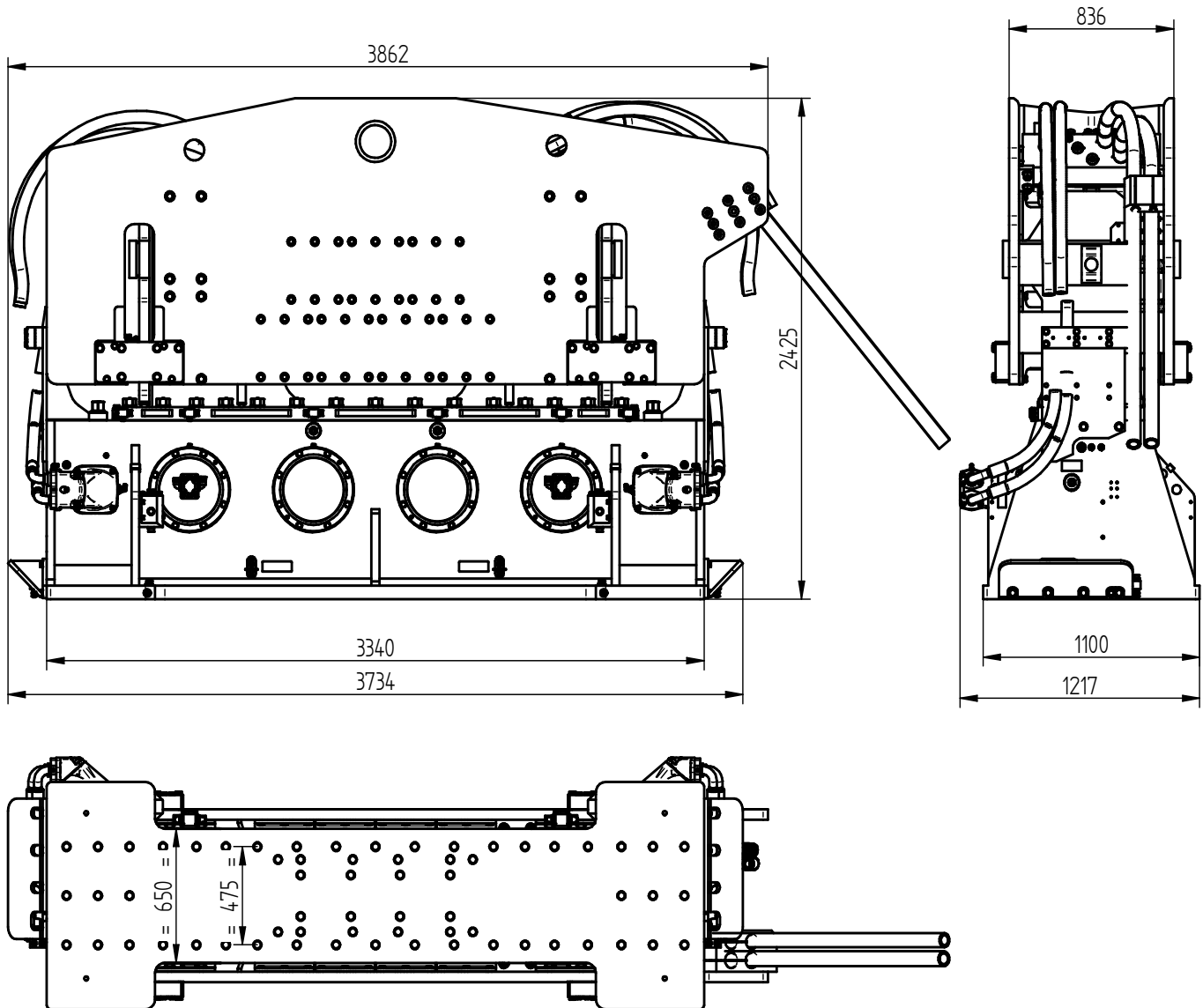
English



### Specifications :

### PVE 130M

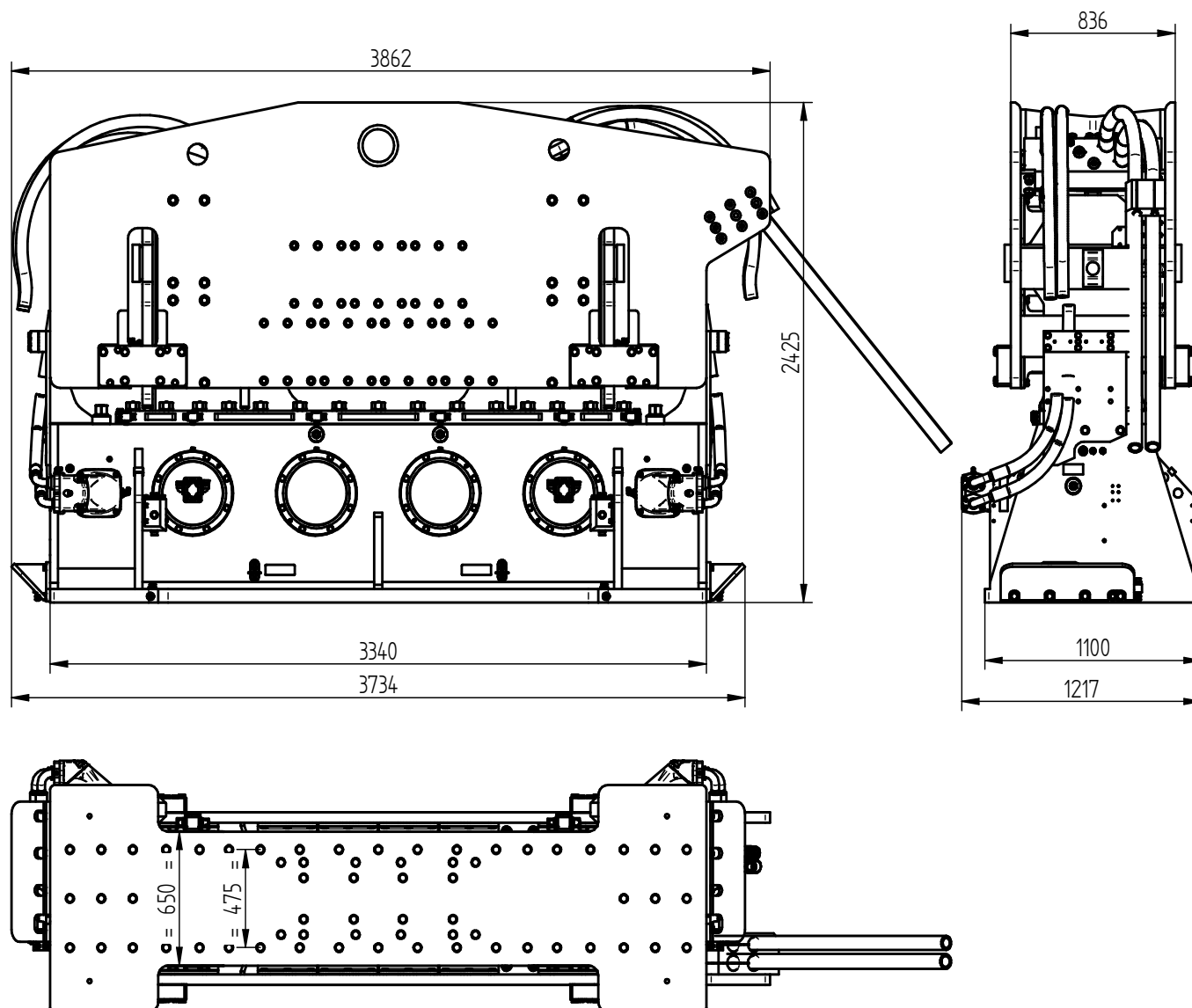
Eccentric moment	130 kgm	<b>Clamps:</b>	
Max. centrifugal force	2794 kN	Sheet pile clamp	DWK 350T
Max. frequency	1400 rpm	Transport weight per piece	2600 kg
Max. amplitude excl. DWK 350T	25 mm	Double clamps	PPK 150T
Max. amplitude incl. DWK 350T	22 mm	Transport weight per piece	1300 kg
Max. static line-pull	1260 kN		
Max. operating pressure	350 bar	<b>Powerpack:</b>	
Max. oil flow	1293 l/min	Model	1400 series
Forced lubrication	yes		
Dynamic weight excl. DWK 350T	10420 kg	<b>Hose set:</b>	
Dynamic weight incl. DWK 350T	13020 kg	Length	60 m
Total weight excl. DWK 350T & hoses	16900 kg	Transport weight (±)	1640 kg



### Technische Daten :

### PVE 130M

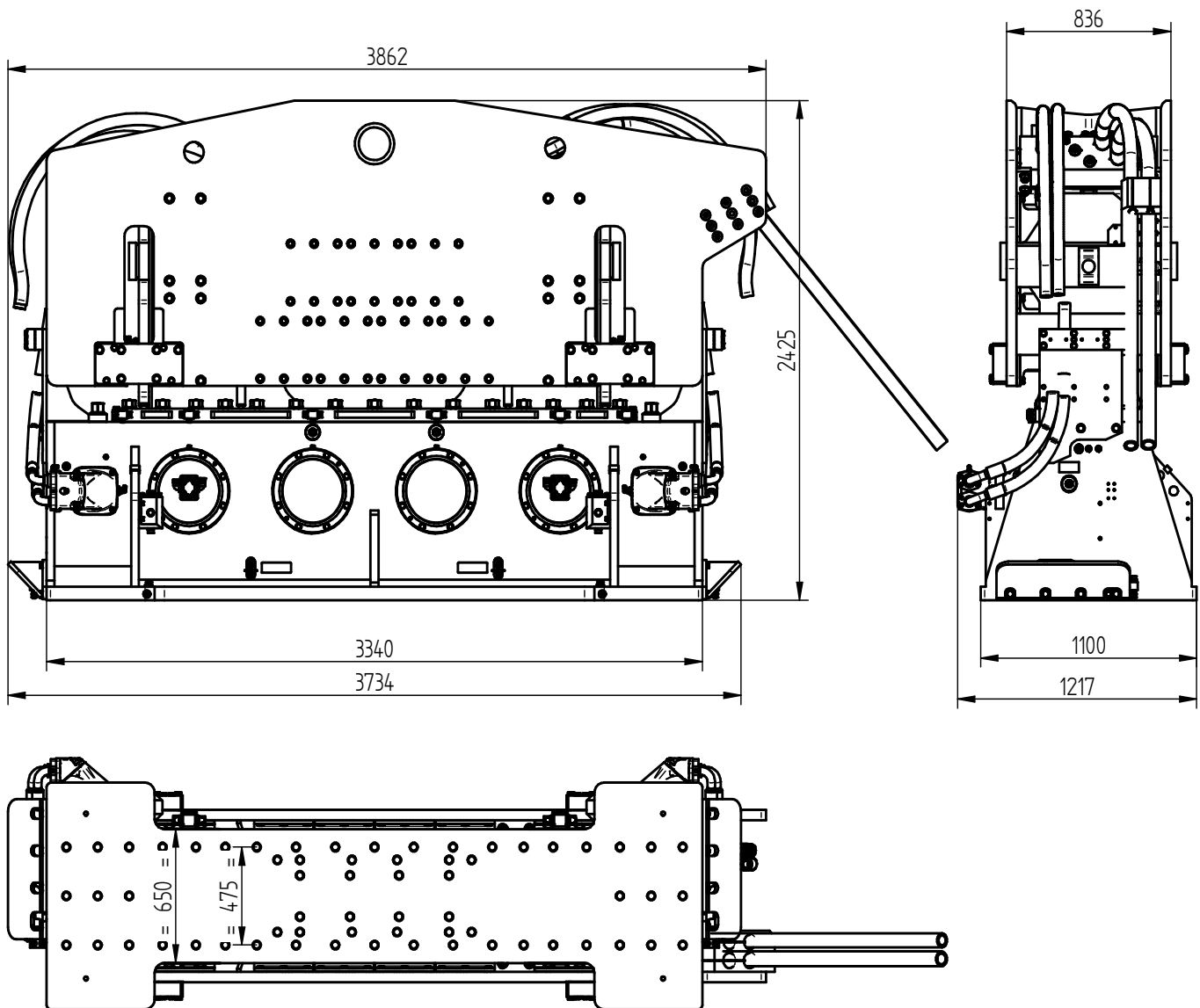
Statisches Moment	130 kgm	<b>Klemmzange:</b>	
Max. Fliehkraft	2794 kN	Universalzange	DWK 350T
Max. Drehzahl	1400 rpm	Transportgew. pro Stück	2600 kg
Max. Amplitude ohne DWK 350T	25 mm	Rohrklemmzange	PPK 150T
Max. Amplitude mit DWK 350T	22 mm	Transportgew. pro Stück	1300 kg
Max. Statische Zugkraft	1260 kN		
Max. Betriebsdruck	350 bar	<b>Aggregat:</b>	
Max. Fördermenge	1293 l/min	Modell	1400 series
Zwangsschmierung	ja		
Dyn. Gewicht ohne DWK 350T	10420 kg	<b>Schlauchsatz:</b>	
Dyn. Gewicht mit DWK 350T	13020 kg	Länge	60 m
Gesamtgew. Ohne DWK 350T & Schläuche	16900 kg	Transportgewicht (±)	1640 kg



### Spécifications

### PVE 130M

Moment excentrique	130 kgm	<b>Pinces:</b>	
Max. force centrifuge	2794 kN	Pince palplanche	DWK 350T
Max. fréquence	1400 rpm	Poids de transport par pièce	2600 kg
Max. amplitude sans DWK 350T	25 mm	Pince tube	PPK 150T
Max. amplitude avec DWK 350T	22 mm	Poids de transport par pièce	1300 kg
Force de traction statique	1260 kN		
Pression de travail max.	350 bar	<b>Groupe hydraulique:</b>	
Débit d'huile max.	1293 l/min	Modèle	1400 series
Huile lubrifiante	oui		
Poids dynamique sans DWK 350T	10420 kg	<b>Jeu de tuyau:</b>	
Poids dynamique avec DWK 350T	13020 kg	Longueur	60 m
Poids total sans DWK 350T & tuyaux	16900 kg	Poids de transport (±)	1640 kg



### Specificaties

### PVE 130M

Excentrisch moment	130 kgm	<b>Klemmen:</b>	
Max. centrifugaalkracht	2794 kN	Damwandklem	DWK 350T
Max. toerental	1400 rpm	Transportgewicht per klem	2600 kg
Max. amplitude excl. DWK 350T	25 mm	Pijpenklem	PPK 150T
Max. amplitude incl. DWK 350T	22 mm	Transportgewicht per klem	1300 kg
Max. statische trekkracht	1260 kN		
Max. werkdruk	350 bar	<b>Aggregaat:</b>	
Max. oliedoorstroming	1293 l/min	Model	1400 series
Geforceerde smering	ja		
Dynamisch gewicht excl. DWK 350T	10420 kg	<b>Slangenset:</b>	
Dynamisch gewicht incl. DWK 350T	13020 kg	Lengte	60 m
Totaalgewicht excl. DWK 350T & slangen	16900 kg	Transportgewicht (±)	1640 kg

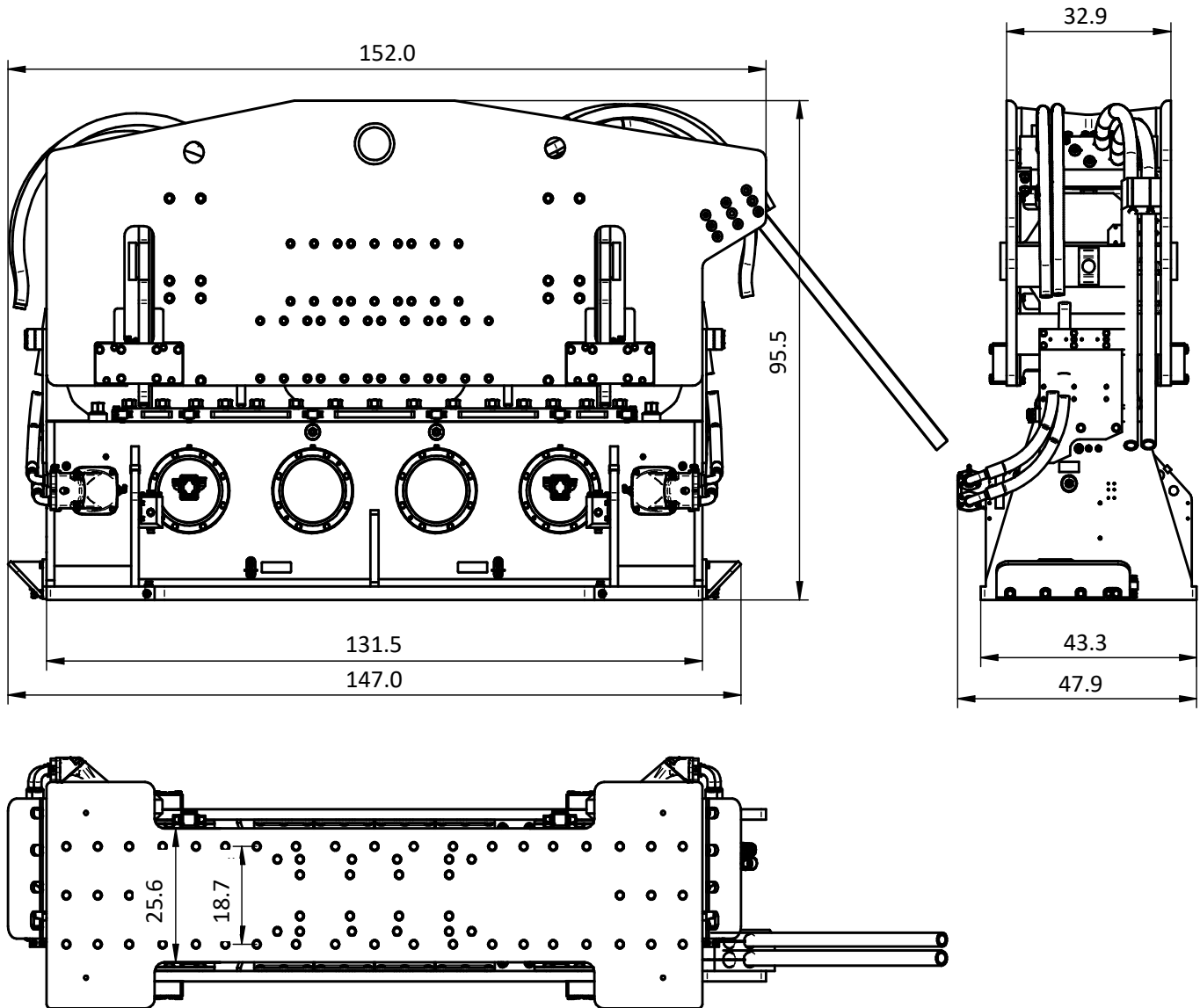


# Specifications

## PVE 130M

Vibro Hammer

USA



### Specifications

### PVE 130M

Eccentric moment	0-11284.7 lbs in	<b>Clamps:</b>	
Max. centrifugal force	0-314.1 US tn	Sheet pile clamp	DWK 350T
Max. frequency	1400 rpm	Transport weight per piece	5732 lbs
Max. amplitude excluding DWK 350T	0.98 in	Double clamps	PPK 150T
Max. amplitude including DWK 350T	0.87 in	Transport weight per piece	2866 lbs
Max. static line-pull	128.5 US tn		
Max. operating pressure	5076 psi	<b>Powerpack:</b>	
Max. oil flow	342 gal/min	Model	1400 series
Forced lubrication	yes		
Dynamic weight excluding DWK 350T	22972 lbs	<b>Hose set:</b>	
Dynamic weight including DWK 350T	28704 lbs	Length	197 ft
Total weight excluding DWK 350T & hoses	37258 lbs	Transport weight (±)	3616 lbs