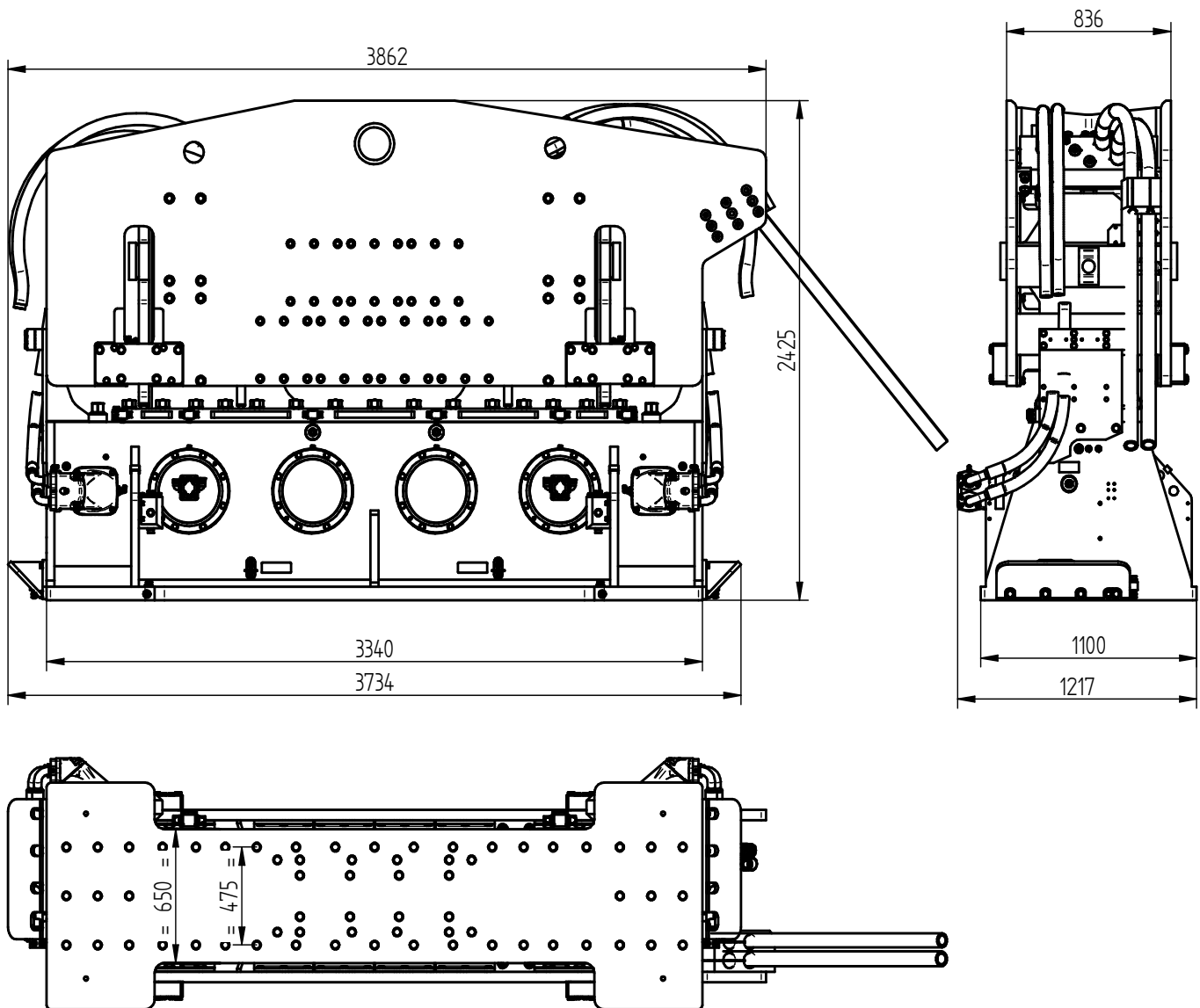


Specifications :

ICE 170NF

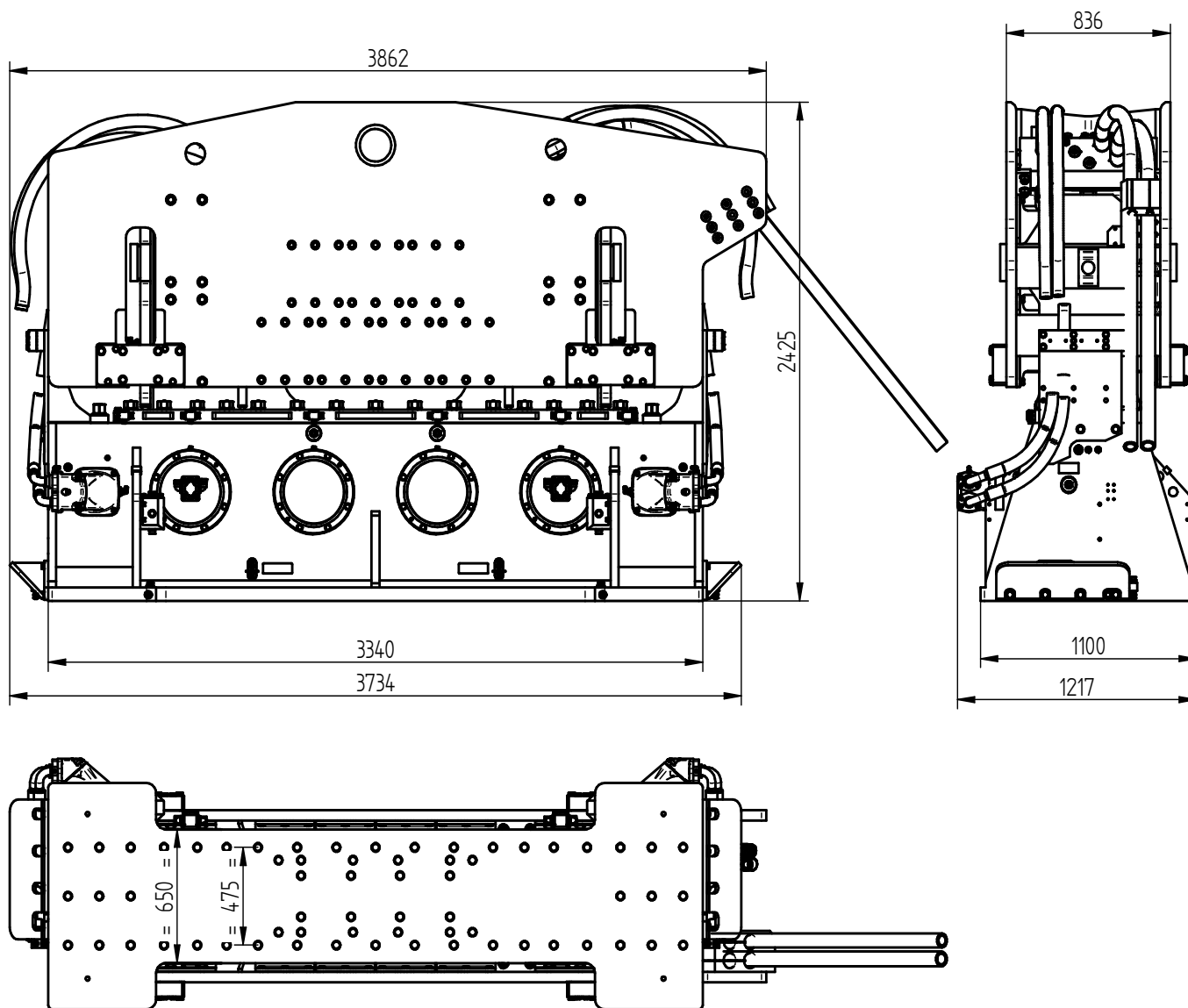
Eccentric moment	170 kgm	Clamps:	
Max. centrifugal force	3654 kN	Double clamps	PPK 350T (2x)
Max. frequency	1400 rpm	Transport weight per piece	2980 kg
Max. amplitude excl. PPK 350T (2x)	29.7 mm		
Max. amplitude incl. PPK 350T (2x)	19.5 mm		
Max. static line-pull	1260 kN		
Max. operating pressure	350 bar	Powerpack:	
Max. oil flow	1293 l/min	Model	1400 series
Forced lubrication	yes		
Dynamic weight excl. PPK 350T (2x)	11455 kg	Hose set:	
Dynamic weight incl. PPK 350T (2x)	17415 kg	Length	60 m
Total weight excl. PPK 350T (2x) & hoses	17850 kg	Transport weight (±)	1640 kg



Technische Daten :

ICE 170NF

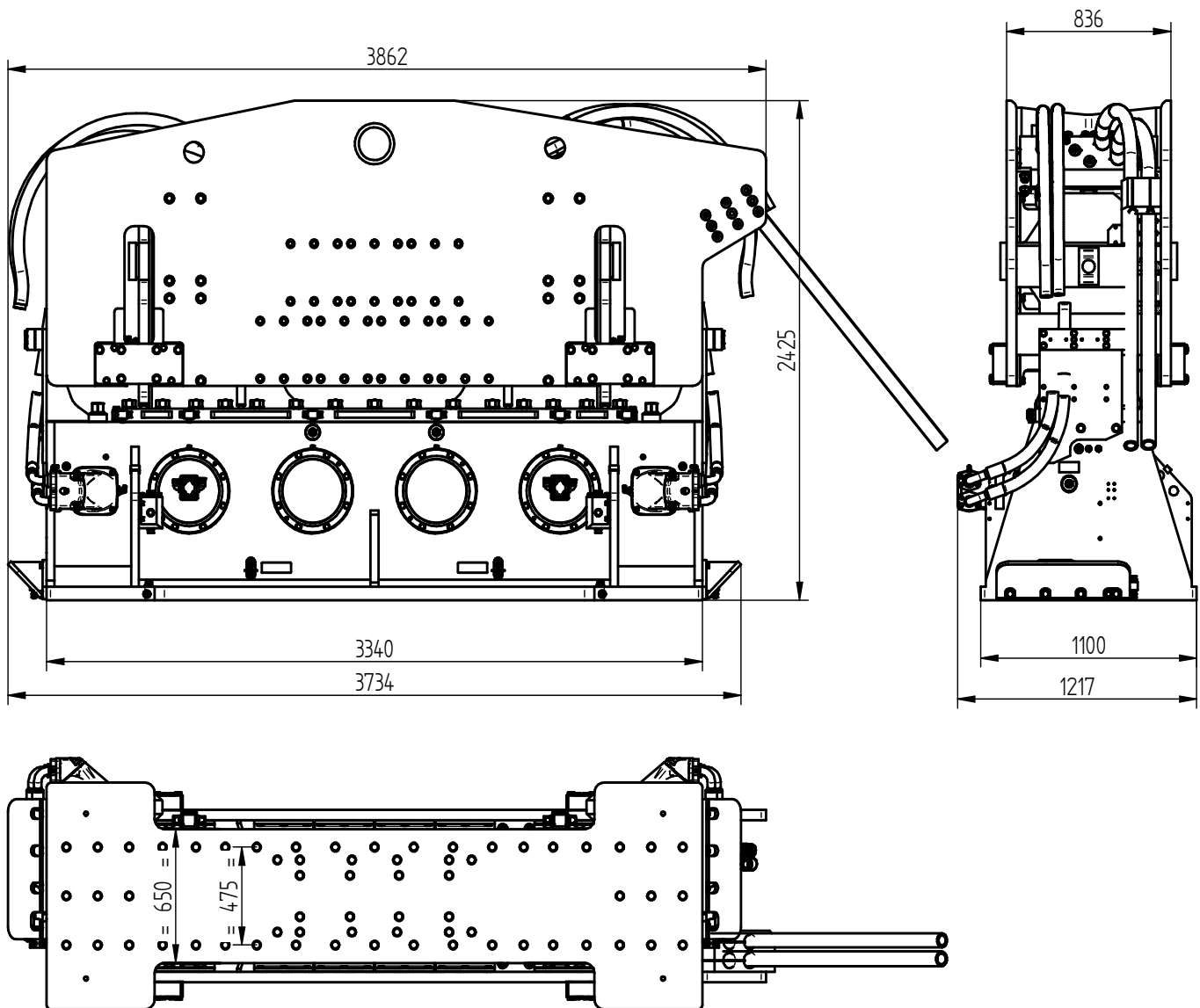
Statisches Moment	170 kgm	Klemmzange:	
Max. Fliehkraft	3654 kN	Rohrklemmzange	PPK 350T
Max. Drehzahl	1400 rpm	Transportgew. pro Stück	2980 kg
Max. Amplitude ohne PPK 350T (2x)	29.7 mm		
Max. Amplitude mit PPK PPK 350T (2x)	19.5 mm		
Max. Statische Zugkraft	1260 kN		
Max. Betriebsdruck	350 bar	Aggregat:	
Max. Fördermenge	1293 l/min	Modell	1400 series
Zwangsschmierung	ja		
Dyn. Gewicht ohne PPK 350T (2x)	11455 kg	Schlauchsatz:	
Dyn. Gewicht mit PPK 350T (2x)	17415 kg	Länge	60 m
Gesamtgew. ohne PPK 350T (2x) & Schläuche	17850 kg	Transportgewicht (±)	1640 kg



Spécifications

ICE 170NF

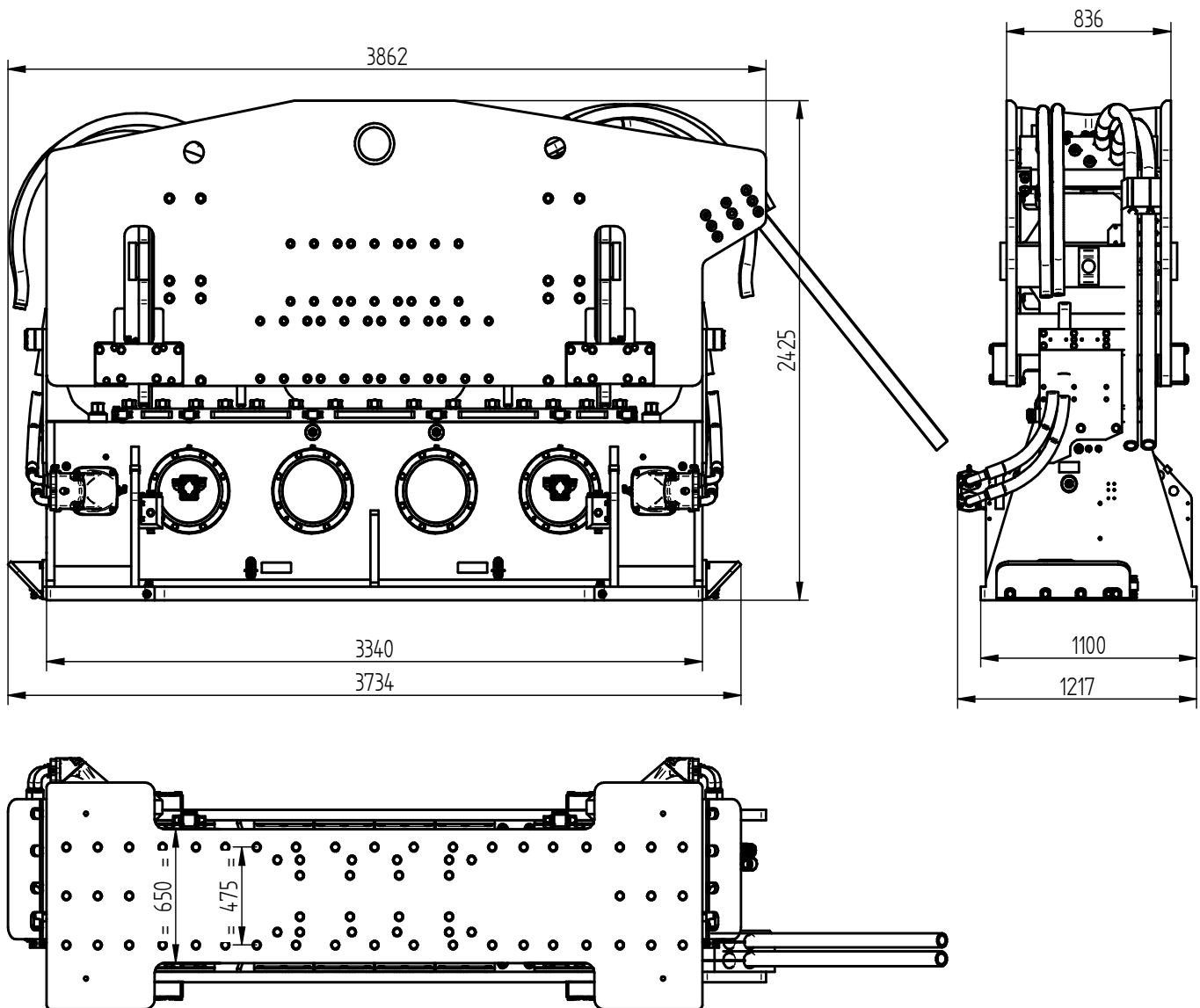
Moment excentrique	170 kgm	Pinces:	
Max. force centrifuge	3654 kN	Pince tube	PPK 350T
Max. fréquence	1400 rpm	Poids de transport par pièce	2980 kg
Max. amplitude sans PPK 350T (2x)	29.7 mm		
Max. amplitude avec PPK 350T (2x)	19.5 mm		
Force de traction statique	1260 kN		
Pression de travail max.	350 bar	Groupe hydraulique:	
Débit d'huile max.	1293 l/min	Modèle	1400 series
Huile lubrifiante	oui		
Poids dynamique sans PPK 350T (2x)	11455 kg	Jeu de tuyau:	
Poids dynamique avec PPK 350T (2x)	17415 kg	Longueur	60 m
Poids total sans PPK 350T (2x) & tuyaux	17850 kg	Poids de transport (±)	1640 kg



Specificaties

ICE 170NF

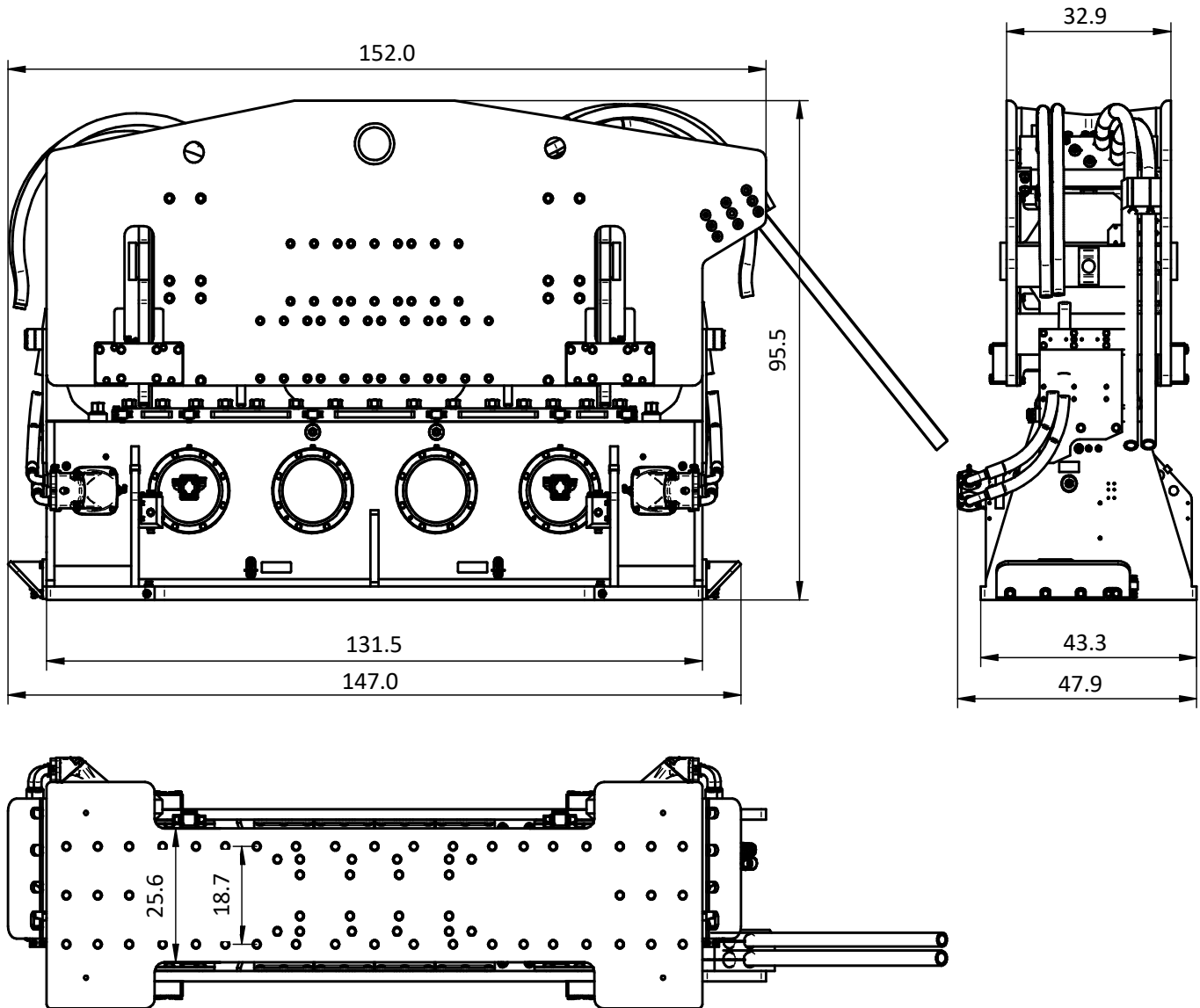
Excentrisch moment	170 kgm	Klemmen:	
Max. centrifugaalkracht	3654 kN	Pijpenklem	PPK 350T
Max. toerental	1400 rpm	Transportgewicht per klem	2980 kg
Max. amplitude excl. PPK 350T (2x)	29.7 mm		
Max. amplitude incl. PPK 350T (2x)	19.5 mm		
Max. statische trekkracht	1260 kN		
Max. werkdruk	350 bar	Aggregaat:	
Max. oliedoorstroming	1293 l/min	Model	1400 series
Geforceerde smering	ja		
Dynamisch gewicht excl. PPK 350T (2x)	11455 kg	Slangenset:	
Dynamisch gewicht incl. PPK 350T (2x)	17415 kg	Lengte	60 m
Totaalgewicht excl. PPK 350T (2x) & slangen	17850 kg	Transportgewicht (±)	1640 kg



Specificatii

ICE 170NF

Moment excentric	170 kgm	Menghina:	
Forta centrifuga maxima	3654 kN	Menghina dubla	PPK 350T
Frecventa maxima	1400 rpm	Greutatea transportului pe buc.	2980 kg
Amplitudinea maxima excluzand PPK 350T (2x)	29.7 mm		
Amplitudinea maxima inclusiv PPK 350T (2x)	19.5 mm		
Tractiune statica maxima	1260 kN		
Presiunea maxima de lucru	350 bar	Unitate de putere:	
Debit maxim de ulei	1293 l/min	Model	1400 series
Ungere fortata	da		
Greutate dinamica excluzand PPK 350T (2x)	11455 kg	Set furtun:	
Greutate dinamica inclusiv PPK 350T (2x)	17415 kg	Lungime	60 m
Greutate totala excl. PPK 350T (2x) & furtunuri	17850 kg	Greutatea transportului (±)	1640 kg



Specifications

ICE 170NF

Eccentric moment	0-14756.9 lbs in	Clamps:	
Max. centrifugal force	0-410.7 US tn	Double clamps	PPK 350T
Max. frequency	1400 rpm	Transport weight per piece	6570 lbs
Max. amplitude excluding PPK 350T (2x)	1.17 in		
Max. amplitude including PPK 350T (2x)	0.77 in		
Max. static line-pull	128.5 US tn		
Max. operating pressure	5076 psi	Powerpack:	
Max. oil flow	342 gal/min	Model	1400 series
Forced lubrication	yes		
Dynamic weight excluding PPK 350T (2x)	25254 lbs	Hose set:	
Dynamic weight including PPK 350T (2x)	38394 lbs	Length	197 ft
Total weight excluding PPK 350T (2x) & hoses	39353 lbs	Transport weight (±)	3616 lbs