

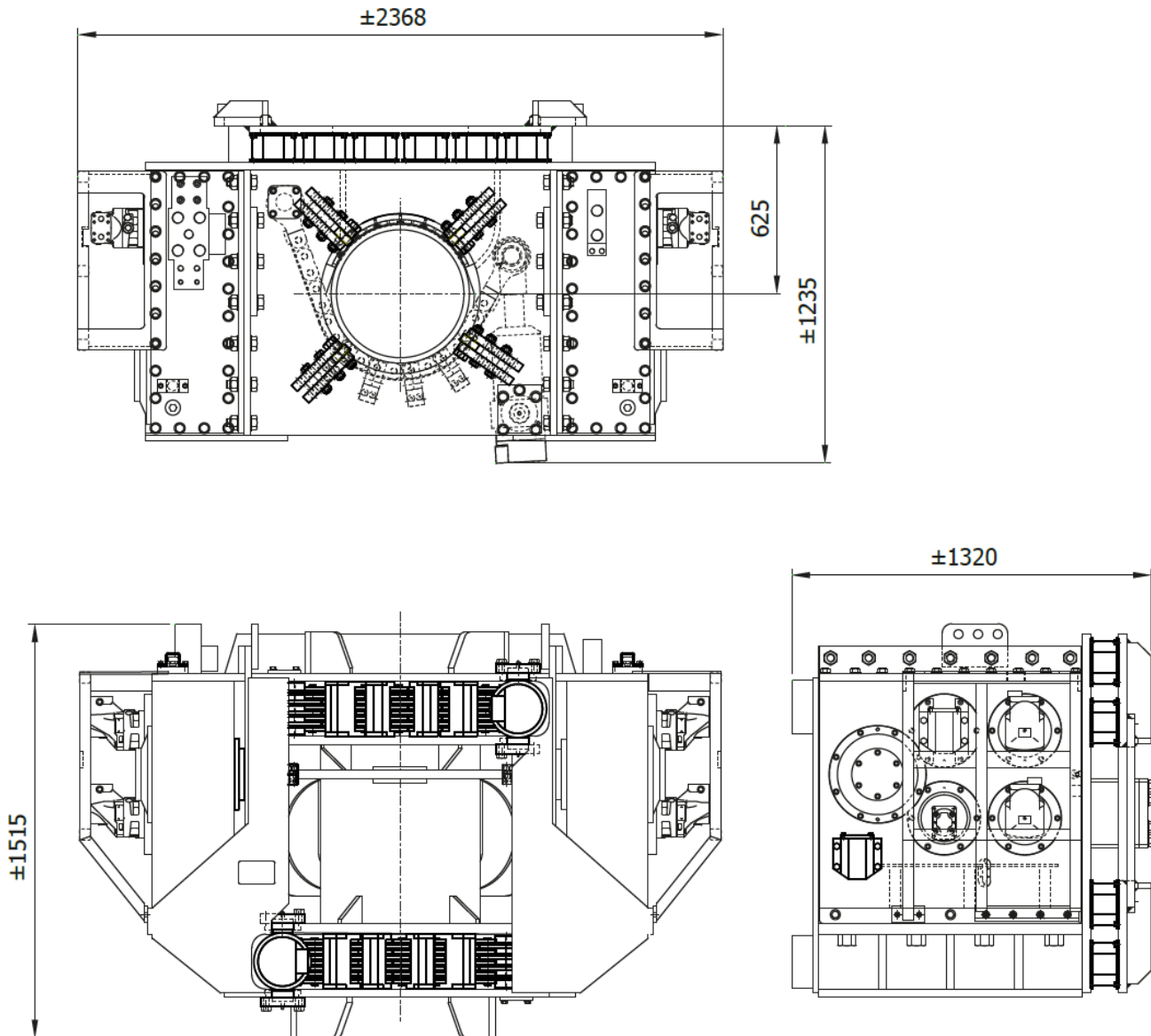


Specification sheet

PVE 20VMR

Vibro Hammer

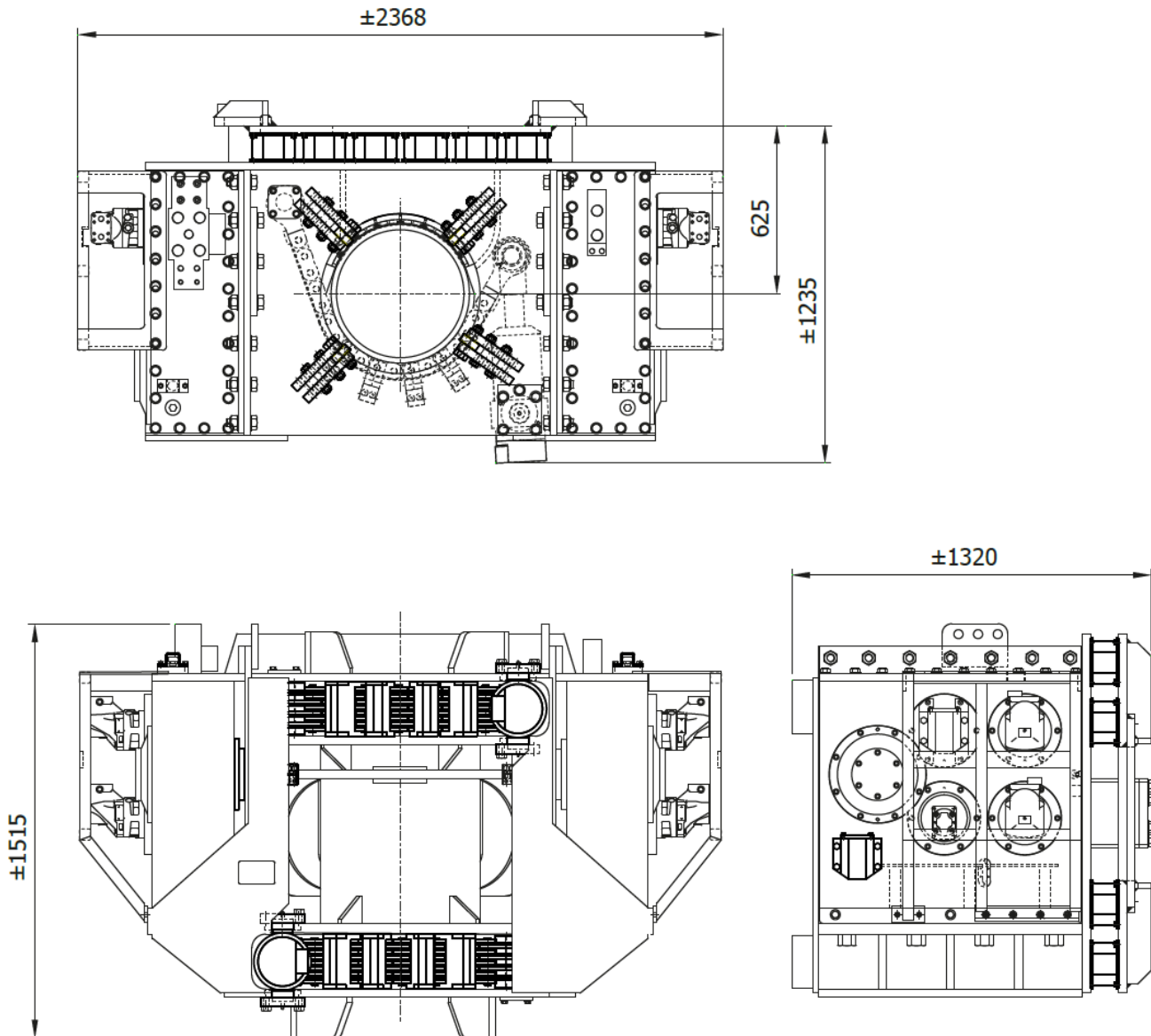
English



Specifications :

PVE 20VMR

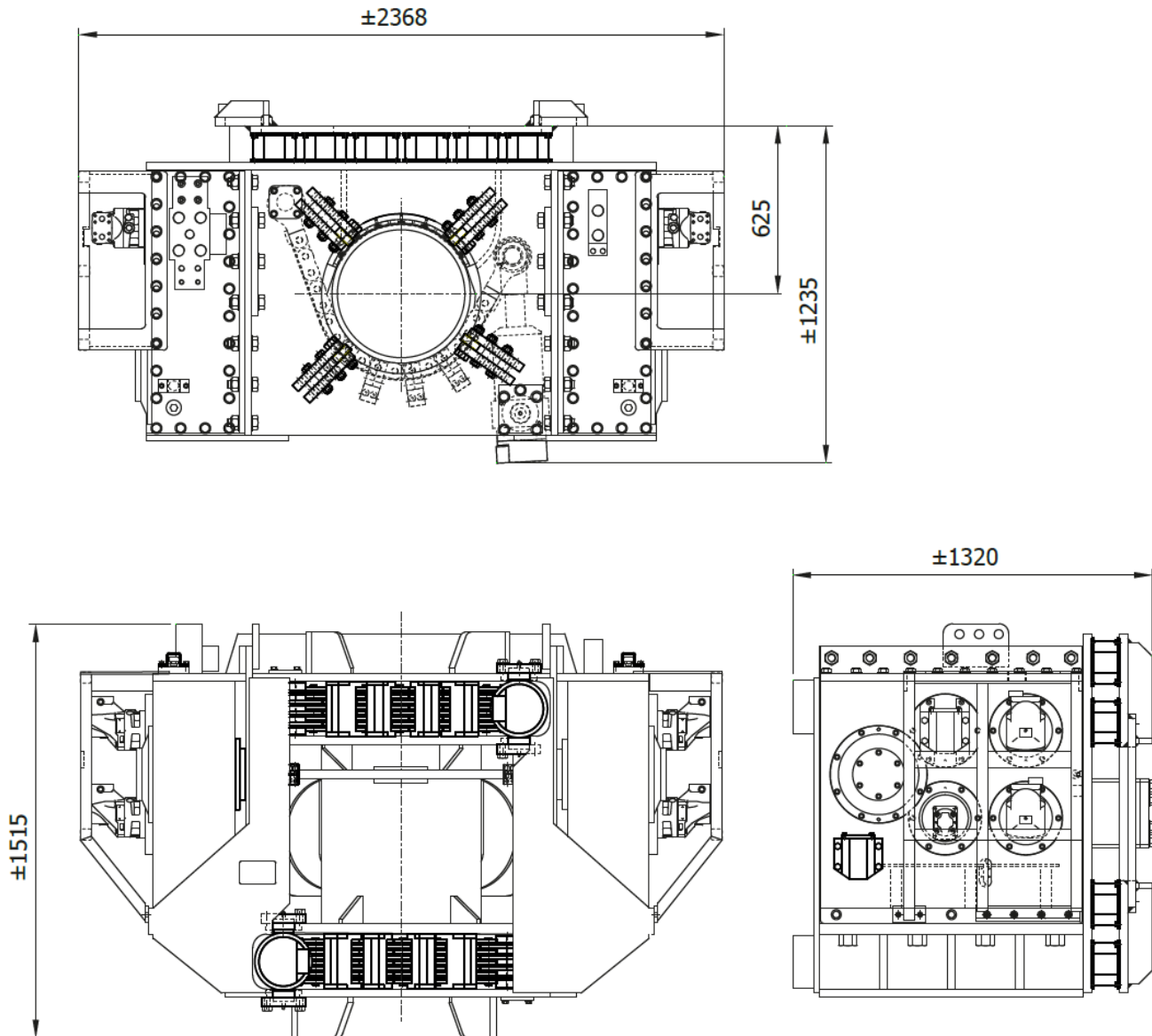
Eccentric moment	0-20 kgm	Clamps:	
Max. centrifugal force	1160 kN	Sheet pile clamp	N/A
Max. frequency	2300 rpm	Transport weight per piece	N/A kg
Max. amplitude	6 mm	Double clamps	N/A
Max. amplitude incl. clamp	N/A mm	Transport weight per piece	N/A kg
Max. static line-pull	300 kN		
Max. operating pressure	350 bar	Powerpack:	
Max. oil flow	550 l/min	Model	600 series
Forced lubrication	yes		
Dynamic weight	6500 kg	Hose set:	
Dynamic weight incl. clamp	N/A kg	Length	N/A m
Total weight excl. hoses	6900 kg	Transport weight (±)	N/A kg



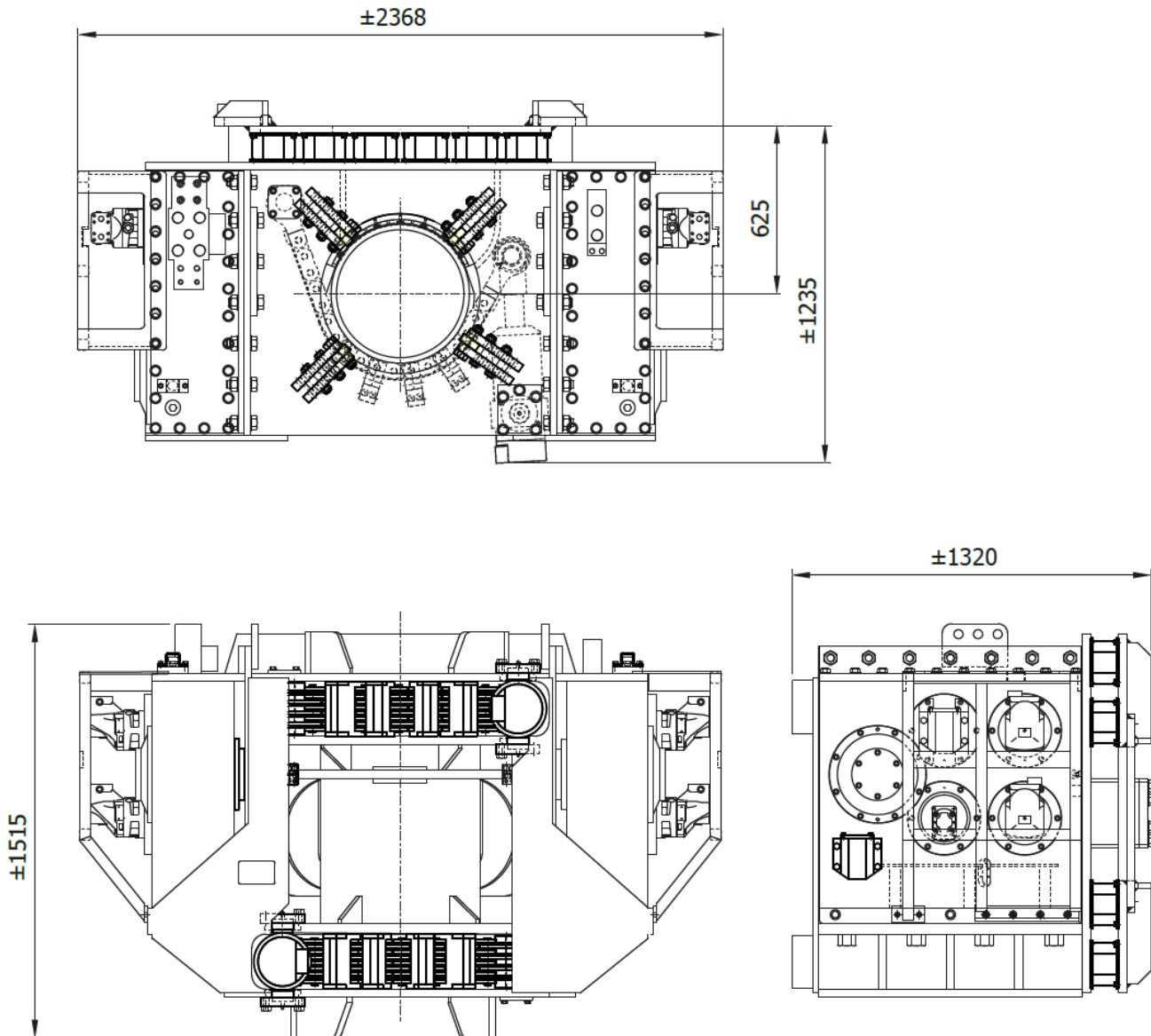
Technische Daten :

PVE 20VMR

Statisches Moment	0-20 kgm	Klemmzange:	
Max. Fliehkraft	1160 kN	Universalzange	N/A
Max. Drehzahl	2300 rpm	Transportgew. pro Stück	N/A kg
Max. Amplitude	6 mm	Rohrklemmzange	N/A
Max. Amplitude mit klemme	N/A mm	Transportgew. pro Stück	N/A kg
Max. Statische Zugkraft	300 kN		
Max. Betriebsdruck	350 bar	Aggregat:	
Max. Fördermenge	550 l/min	Modell	600 series
Zwangsschmierung	ja		
Dyn. Gewicht	6500 kg	Schlauchsatz:	
Dyn. Gewicht mit klemme	N/A kg	Länge	N/A m
Gesamtgew. Ohne Schläuche	6900 kg	Transportgewicht (±)	N/A kg

**Spécifications****PVE 20VMR**

Moment excentrique	0-20 kgm	Pinces:	
Max. force centrifuge	1160 kN	Pince palplanche	N/A
Max. fréquence	2300 rpm	Poids de transport par pièce	N/A kg
Max. amplitude	6 mm	Pince tube	N/A
Max. amplitude avec pince	N/A mm	Poids de transport par pièce	N/A kg
Force de traction statique	300 kN		
Pression de travail max.	350 bar	Groupe hydraulique:	
Débit d'huile max.	550 l/min	Modèle	600 series
Huile lubrifiante	oui		
Poids dynamique	6500 kg	Jeu de tuyau:	
Poids dynamique avec pince	N/A kg	Longueur	N/A m
Poids total sans tuyaux	6900 kg	Poids de transport (±)	N/A kg



Specificaties

PVE 20VMR

Excentrisch moment	0-20 kgm	Klemmen:	
Max. centrifugaalkracht	1160 kN	Damwandklem	N/A
Max. toerental	2300 rpm	Transportgewicht per klem	N/A kg
Max. amplitude	6 mm	Pijpenklem	N/A
Max. amplitude incl. klem	N/A mm	Transportgewicht per klem	N/A kg
Max. statische trekkracht	300 kN		
Max. werkdruk	350 bar	Aggregaat:	
Max. oliedoorstroming	550 l/min	Model	600 series
Geforceerde smering	ja		
Dynamisch gewicht	6500 kg	Slangenset:	
Dynamisch gewicht incl. klem	N/A kg	Lengte	N/A m
Totaalgewicht excl. slangen	6900 kg	Transportgewicht (±)	N/A kg

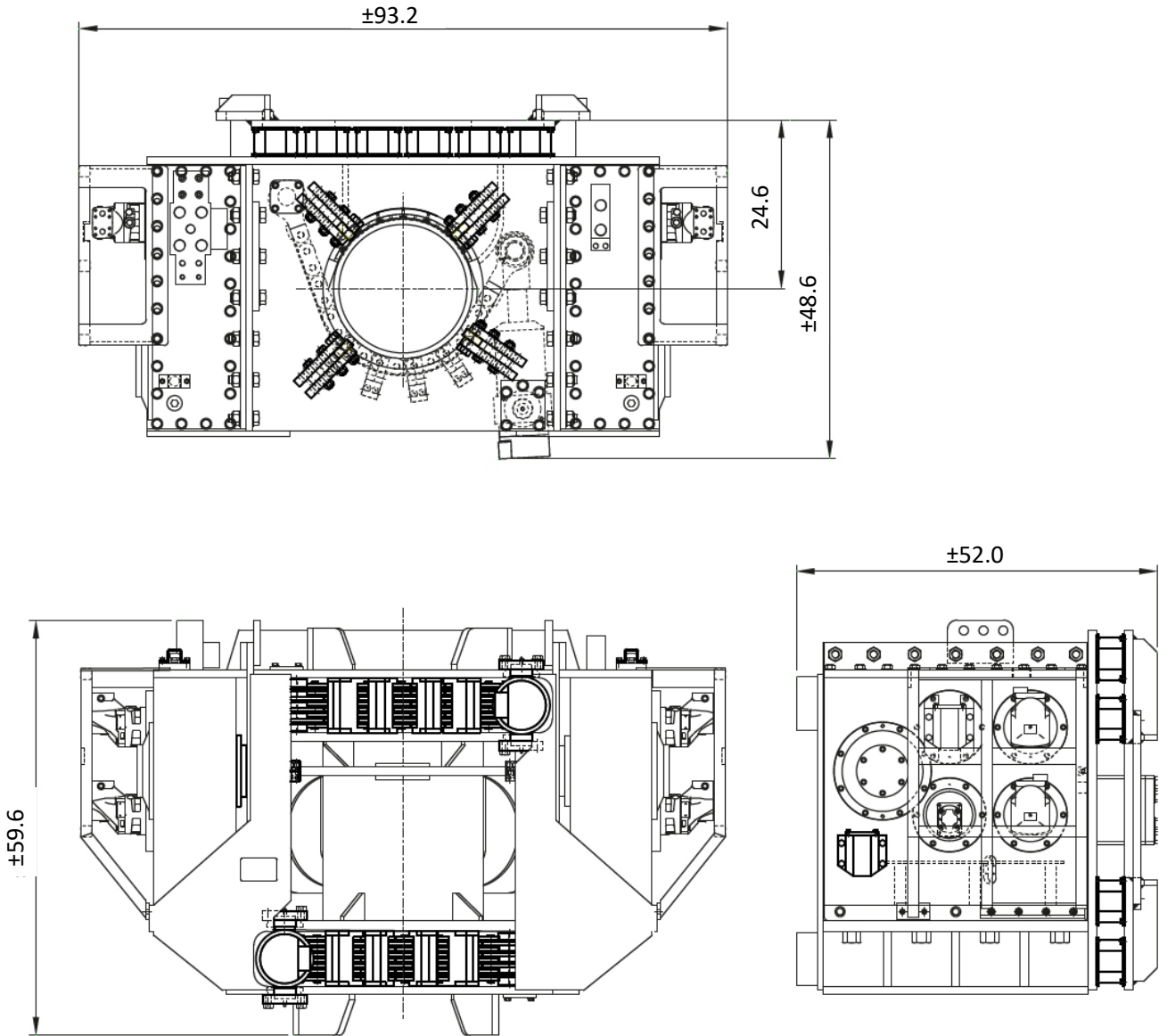


Specifications

PVE 20VMR

Vibro Hammer

USA



Specifications

PVE 20VMR

Eccentric moment	0-1736.1 lbs in	Clamps:	
Max. centrifugal force	0-130.4 US tn	Sheet pile clamp	N/A
Max. frequency	2300 rpm	Transport weight per piece	N/A lbs
Max. amplitude	0.24 in	Double clamps	N/A
Max. amplitude including clamp	N/A in	Transport weight per piece	N/A lbs
Max. static line-pull	30.6 US tn		
Max. operating pressure	5076 psi	Powerpack:	
Max. oil flow	145 gal/min	Model	600 series
Forced lubrication	yes		
Dynamic weight	14330 lbs	Hose set:	
Dynamic weight including clamp	N/A lbs	Length	N/A ft
Total weight excluding hoses	15212 lbs	Transport weight (\pm)	N/A lbs