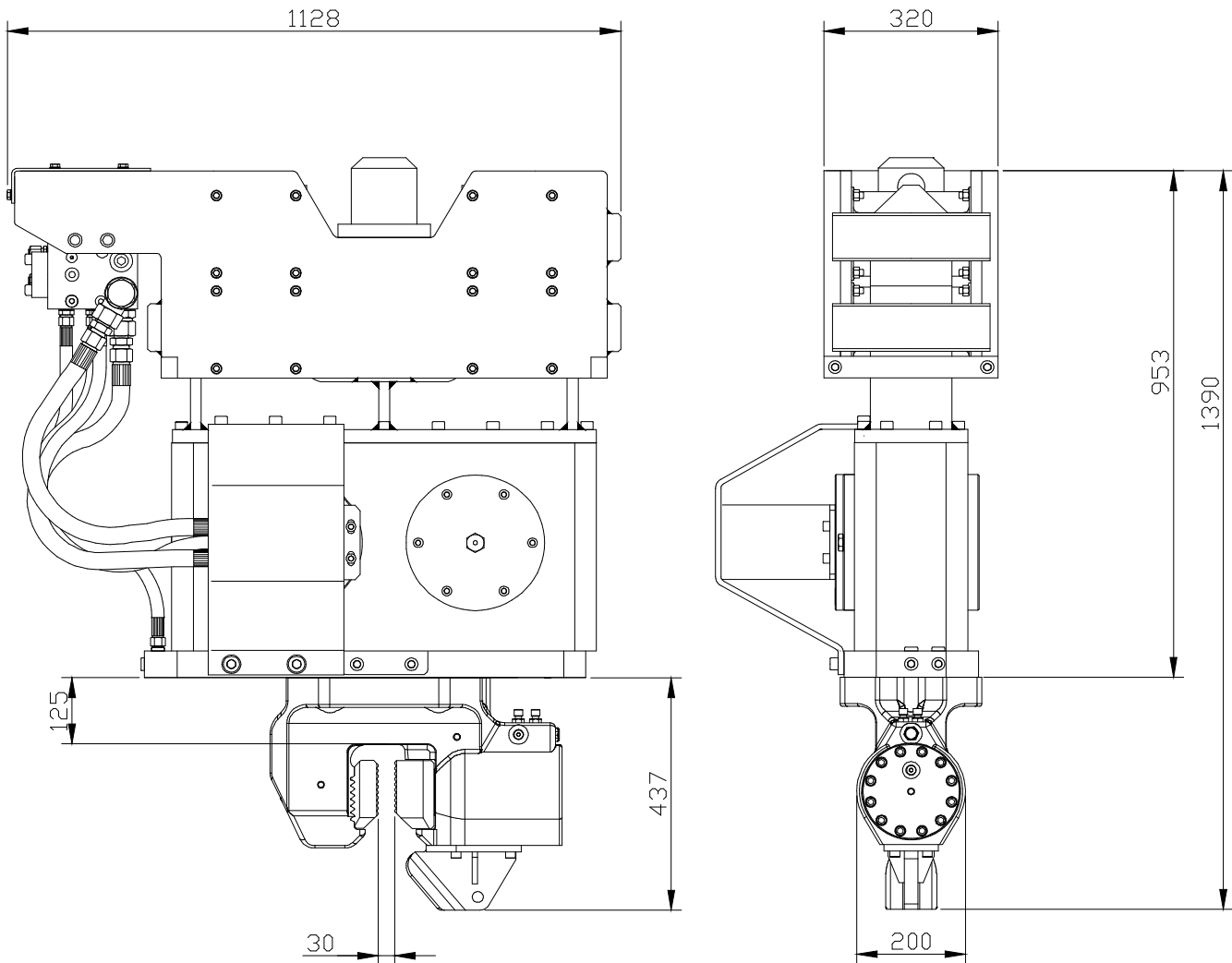


### Specifications :

### ICE 328B

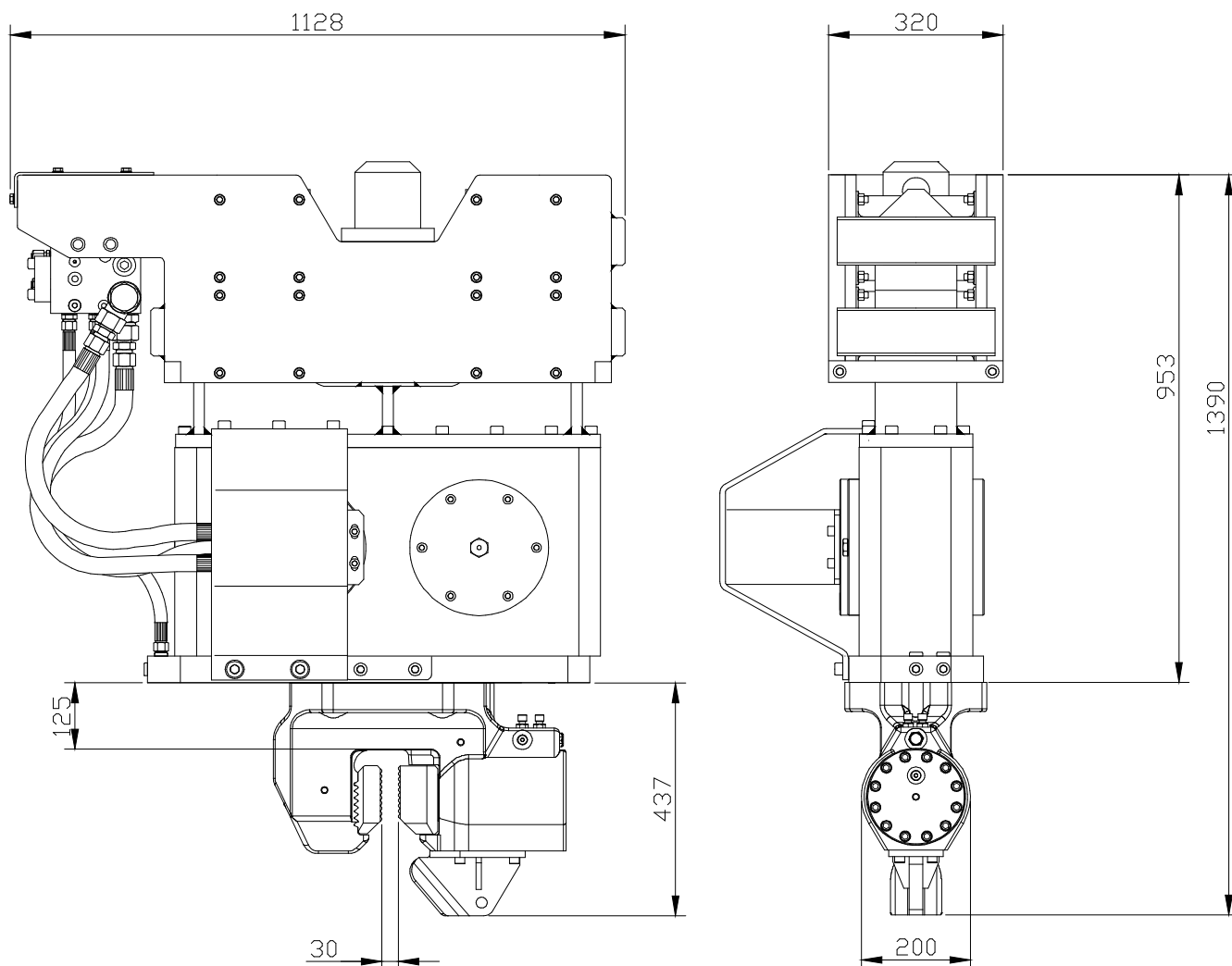
Eccentric moment	3.2 kgm	<b>Clamps:</b>	
Max. centrifugal force	275 kN	Sheet pile clamp	40TU
Max. frequency	2800 rpm	Transport weight per piece	165 kg
Max. amplitude excl. 40TU	11.1 mm	Double clamps	N/A
Max. amplitude incl. 40TU	8.6 mm	Transport weight per piece	N/A kg
Max. static line-pull	120 kN		
Max. operating pressure	350 bar	<b>Powerpack:</b>	
Max. oil flow	112 l/min	Model	N/A
Forced lubrication	no		
Dynamic weight excl. 40TU	575 kg	<b>Hose set:</b>	
Dynamic weight incl. 40TU	740 kg	Length	N/A m
Total weight excl. 40TU & hoses	1090 kg	Transport weight (±)	N/A kg



#### Technische Daten :

#### ICE 328B

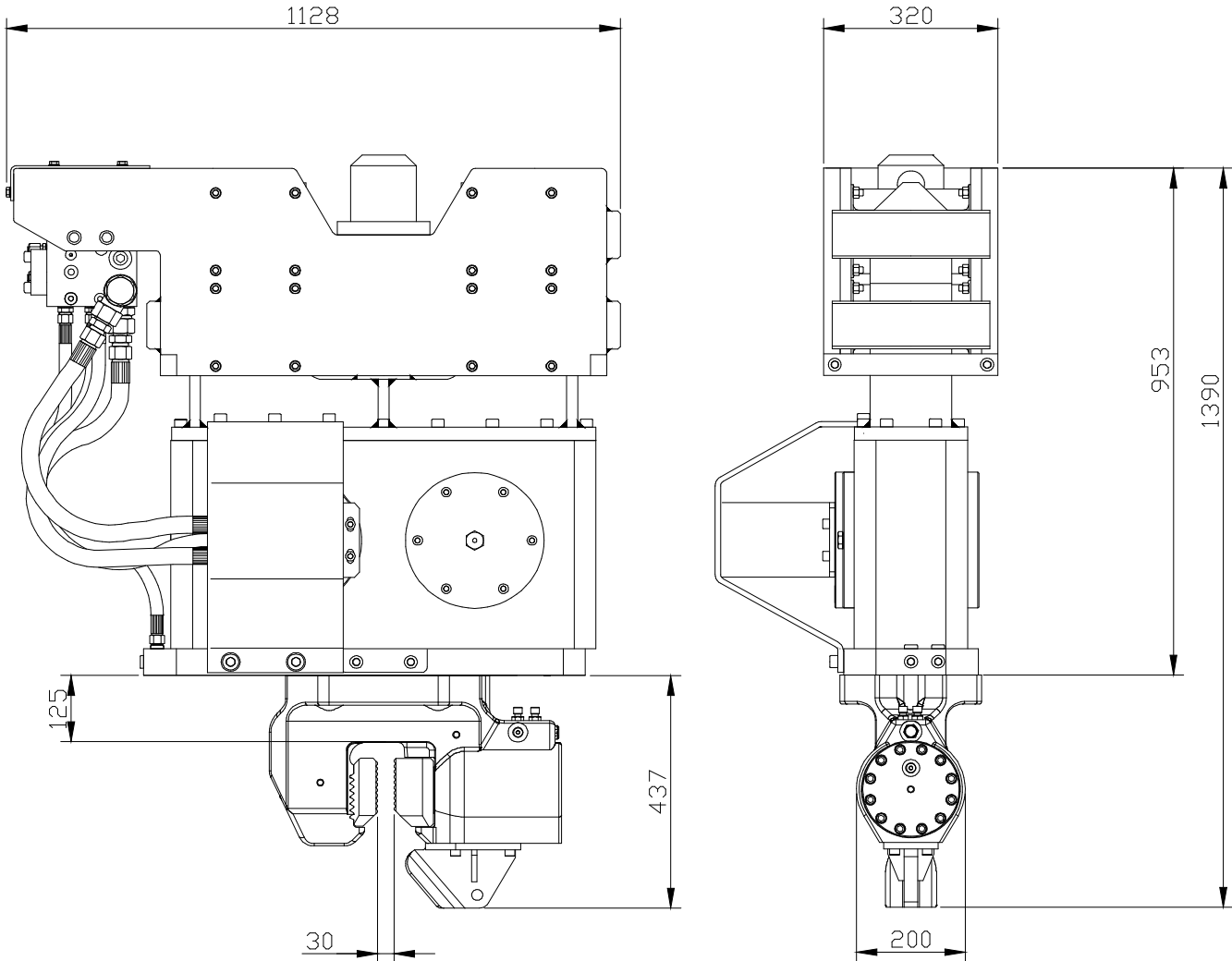
Statisches Moment	3.2 kgm	<b>Klemmzange:</b>	
Max. Fliehkraft	275 kN	Universalzange	40TU
Max. Drehzahl	2800 rpm	Transportgew. pro Stück	165 kg
Max. Amplitude ohne 60TU	11.1 mm	Rohrklemmzange	N/A
Max. Amplitude mit 60TU	8.6 mm	Transportgew. pro Stück	N/A kg
Max. Statische Zugkraft	120 kN		
Max. Betriebsdruck	350 bar	<b>Aggregat:</b>	
Max. Fördermenge	112 l/min	Modell	N/A
Zwangsschmierung	nein		
Dyn. Gewicht ohne 60TU	575 kg	<b>Schlauchsatz:</b>	
Dyn. Gewicht mit 60TU	740 kg	Länge	N/A m
Gesamtgew. ohne 60TU & Schläuche	1090 kg	Transportgewicht (±)	N/A kg



### Spécifications

### ICE 328B

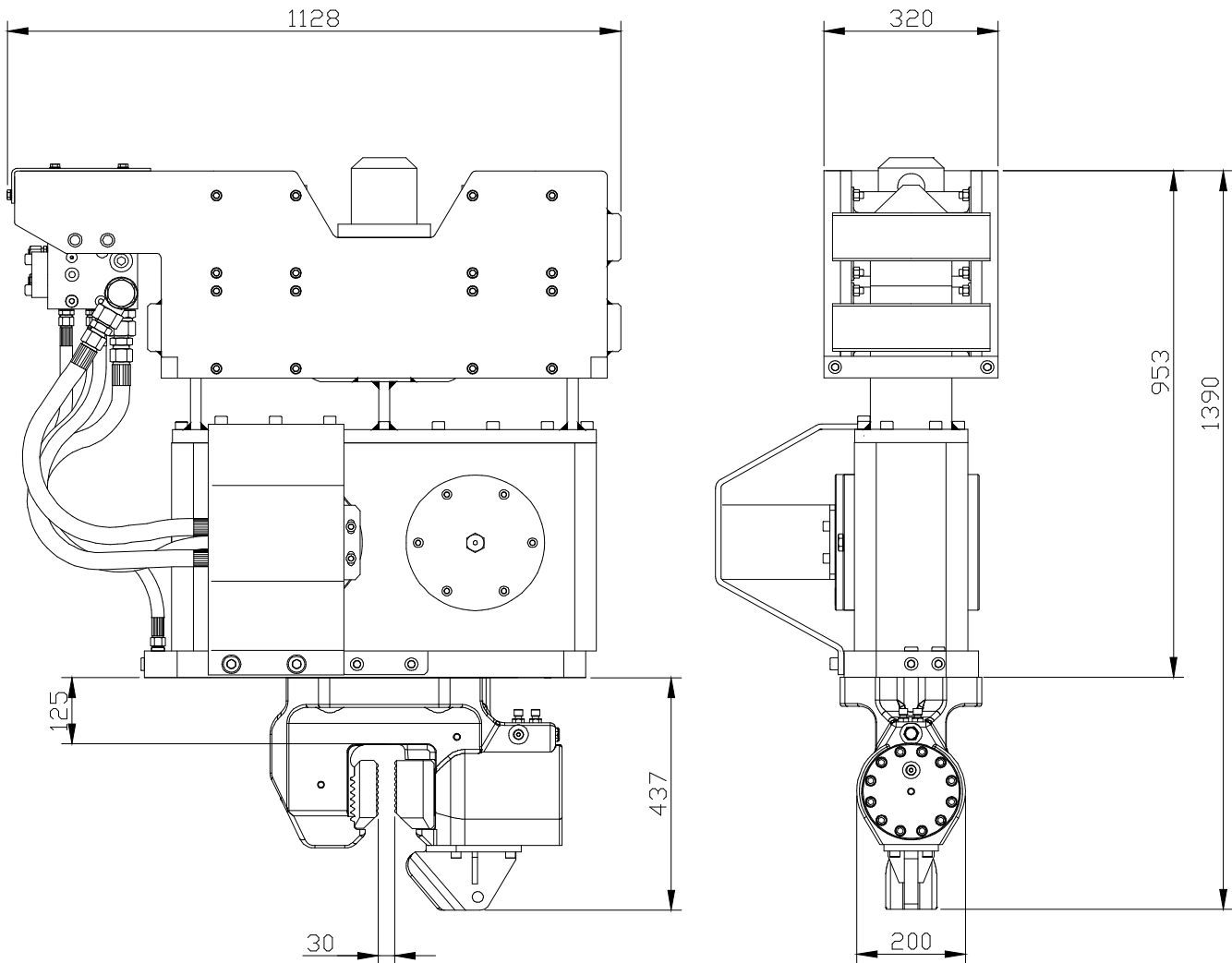
Moment excentrique	3.2 kgm	<b>Pinces:</b>	
Max. force centrifuge	275 kN	Pince palplanche	40TU
Max. fréquence	2800 rpm	Poids de transport par pièce	165 kg
Max. amplitude sans 60TU	11.1 mm	Pince tube	N/A
Max. amplitude avec 60TU	8.6 mm	Poids de transport par pièce	N/A kg
Force de traction statique	120 kN		
Pression de travail max.	350 bar	<b>Groupe hydraulique:</b>	
Débit d'huile max.	112 l/min	Modèle	N/A
Huile lubrifiante	no		
Poids dynamique sans 60TU	575 kg	<b>Jeu de tuyau:</b>	
Poids dynamique avec 60TU	740 kg	Longueur	N/A m
Poids total sans 60TU & tuyaux	1090 kg	Poids de transport (±)	N/A kg



## Specificaties

## ICE 328B

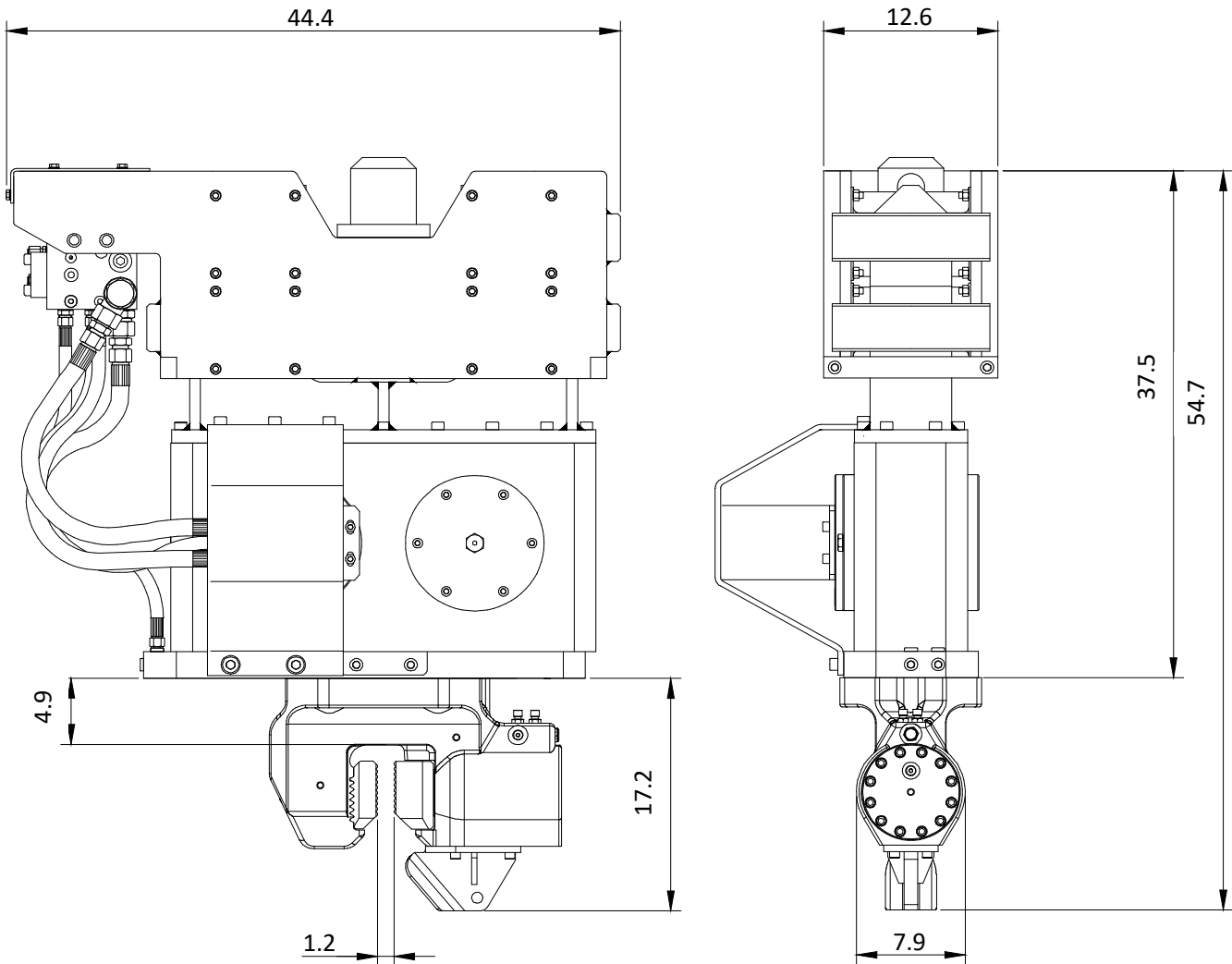
Excentrisch moment	3.2 kgm	<b>Klemmen:</b>	
Max. centrifugaalkracht	275 kN	Damwandklem	40TU
Max. toerental	2800 rpm	Transportgewicht per klem	165 kg
Max. amplitude excl. 60TU	11.1 mm	Pijpenklem	N/A
Max. amplitude incl. 60TU	8.6 mm	Transportgewicht per klem	N/A kg
Max. statische trekkracht	120 kN		
Max. werkdruk	350 bar	<b>Aggregaat:</b>	
Max. oliedoorstroming	112 l/min	Model	N/A
Geforceerde smering	nee		
Dynamisch gewicht excl. 60TU	575 kg	<b>Slangenset:</b>	
Dynamisch gewicht incl. 60TU	740 kg	Lengte	N/A m
Totaalgewicht excl. 60TU & slangen	1090 kg	Transportgewicht (±)	N/A kg



## Specificatii

## ICE 328B

Moment excentric	3.2 kgm	<b>Menghina:</b>	
Forta centrifuga maxima	275 kN	Menghina pentru palplanse	40TU
Frecventa maxima	2800 rpm	Greutatea transportului pe buc.	165 kg
Amplitudinea maxima excluzand 60TU	11.1 mm	Menghina dubla	N/A
Amplitudinea maxima inclusiv 60TU	8.6 mm	Greutatea transportului pe buc.	N/A kg
Tractiune statica maxima	120 kN		
Presiunea maxima de lucru	350 bar	<b>Unitate de putere:</b>	
Debit maxim de ulei	112 l/min	Model	N/A
Ungere fortata	nu		
Greutate dinamica excluzand 100TU	575 kg	<b>Set furtun:</b>	
Greutate dinamica inclusiv 100TU	740 kg	Lungime	N/A m
Greutate totala excl. 60TU & furtunuri	1090 kg	Greutatea transportului (+)	N/A kg



### Specifications

### ICE 328B

Eccentric moment	0-277.8 lbs in	<b>Clamps:</b>	
Max. centrifugal force	0-30.9 US tn	Sheet pile clamp	40TU
Max. frequency	2800 rpm	Transport weight per piece	364 lbs
Max. amplitude excluding 100TU	0.44 in	Double clamps	N/A
Max. amplitude including 100TU	0.34 in	Transport weight per piece	N/A lbs
Max. static line-pull	12.2 US tn		
Max. operating pressure	5076 psi	<b>Powerpack:</b>	
Max. oil flow	30 gal/min	Model	N/A
Forced lubrication	no		
Dynamic weight excluding 100TU	1268 lbs	<b>Hose set:</b>	
Dynamic weight including 100TU	1631 lbs	Length	N/A ft
Total weight excluding 100TU & hoses	2403 lbs	Transport weight (±)	N/A lbs