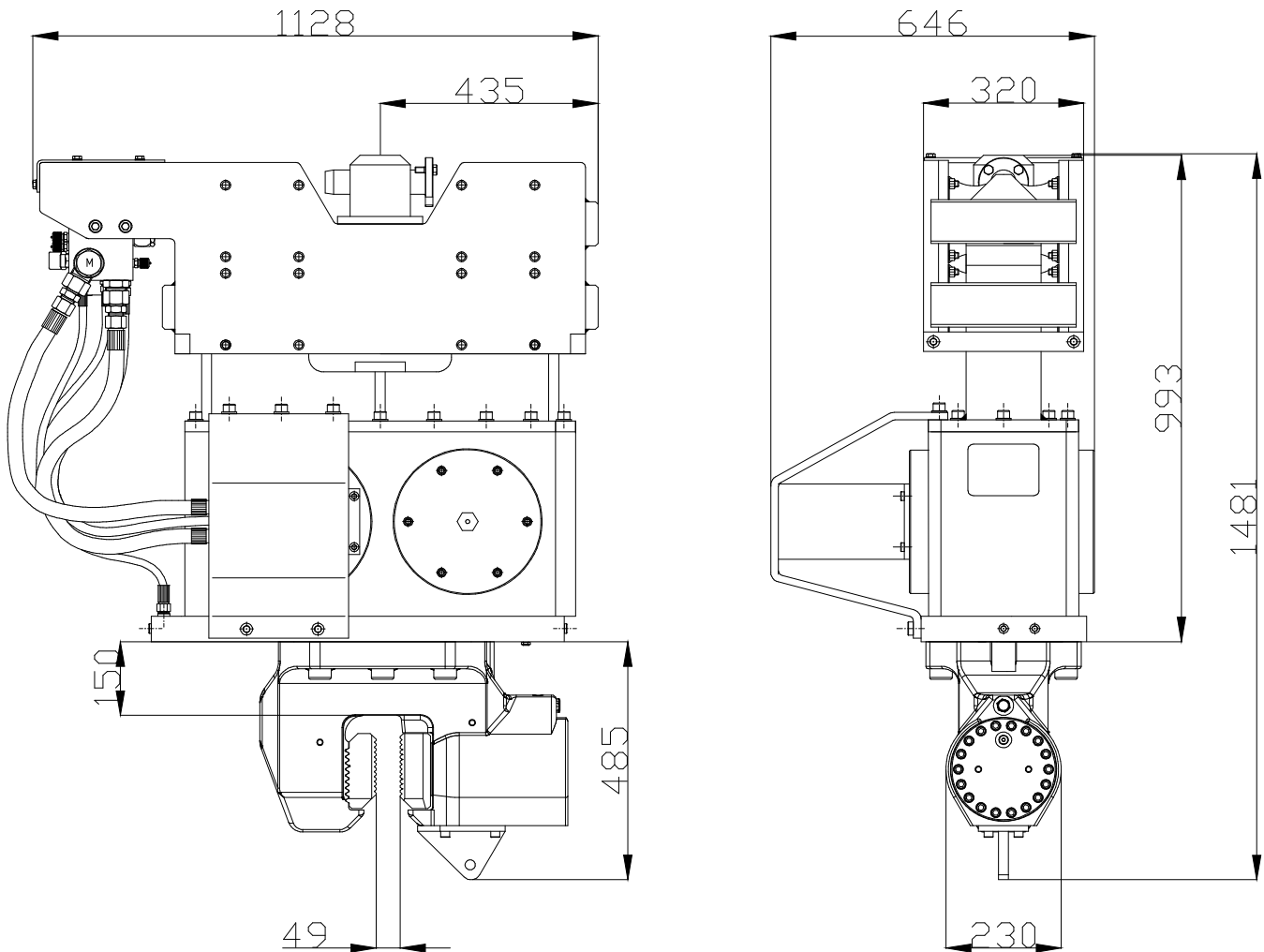


Specifications :

ICE 428B

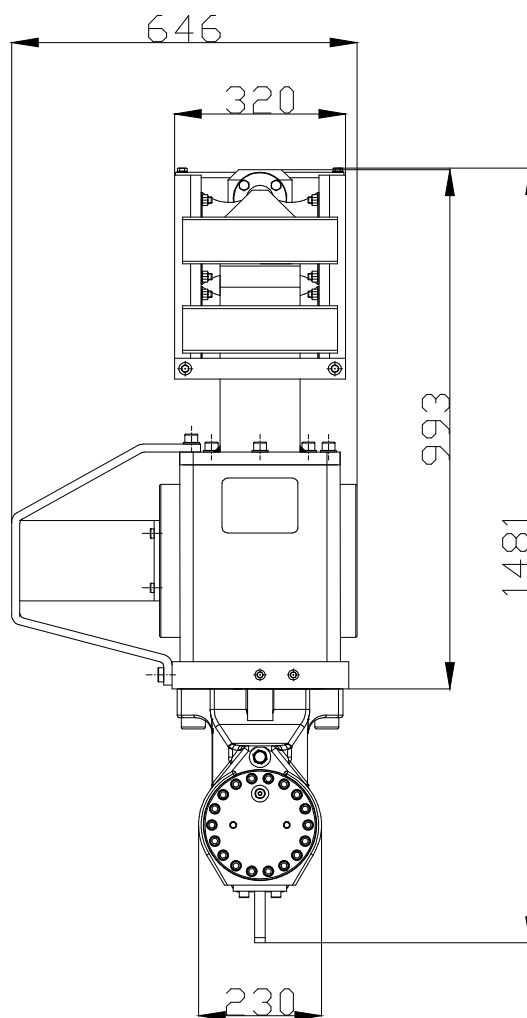
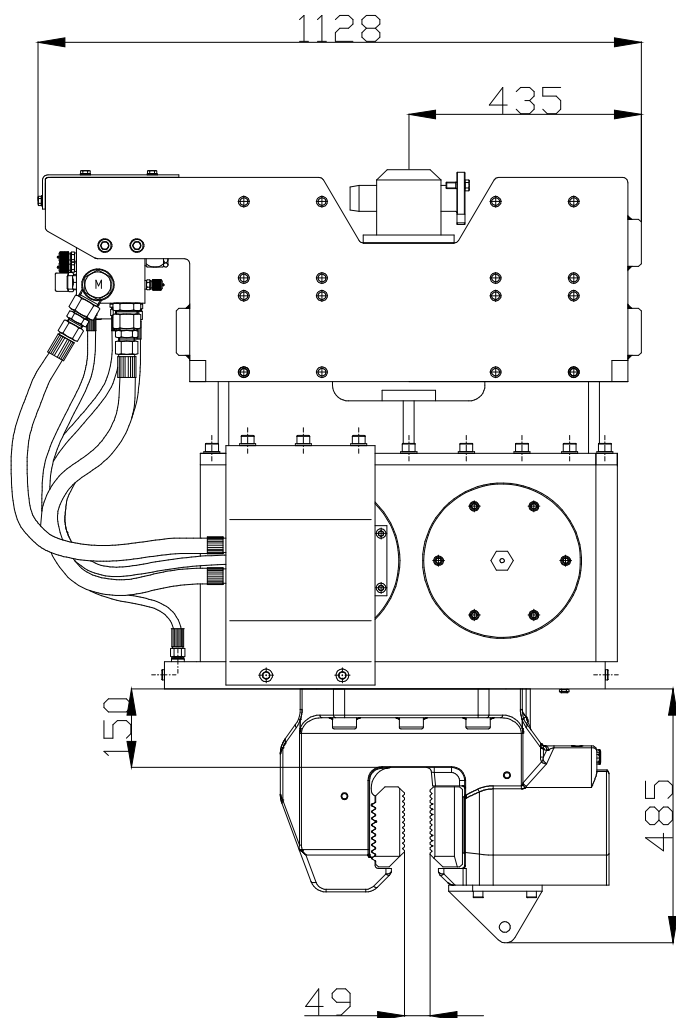
| | | | |
|---------------------------------|-----------|----------------------------|--------|
| Eccentric moment | 4 kgm | Clamps: | |
| Max. centrifugal force | 344 kN | Sheet pile clamp | 60TU |
| Max. frequency | 2800 rpm | Transport weight per piece | 250 kg |
| Max. amplitude excl. 60TU | 12.3 mm | Double clamps | N/A |
| Max. amplitude incl. 60TU | 8.9 mm | Transport weight per piece | N/A kg |
| Max. static line-pull | 120 kN | | |
| Max. operating pressure | 350 bar | Powerpack: | |
| Max. oil flow | 168 l/min | Model | N/A |
| Forced lubrication | no | | |
| Dynamic weight excl. 60TU | 650 kg | Hose set: | |
| Dynamic weight incl. 60TU | 900 kg | Length | N/A m |
| Total weight excl. 60TU & hoses | 1280 kg | Transport weight (±) | N/A kg |



Technische Daten :

ICE 428B

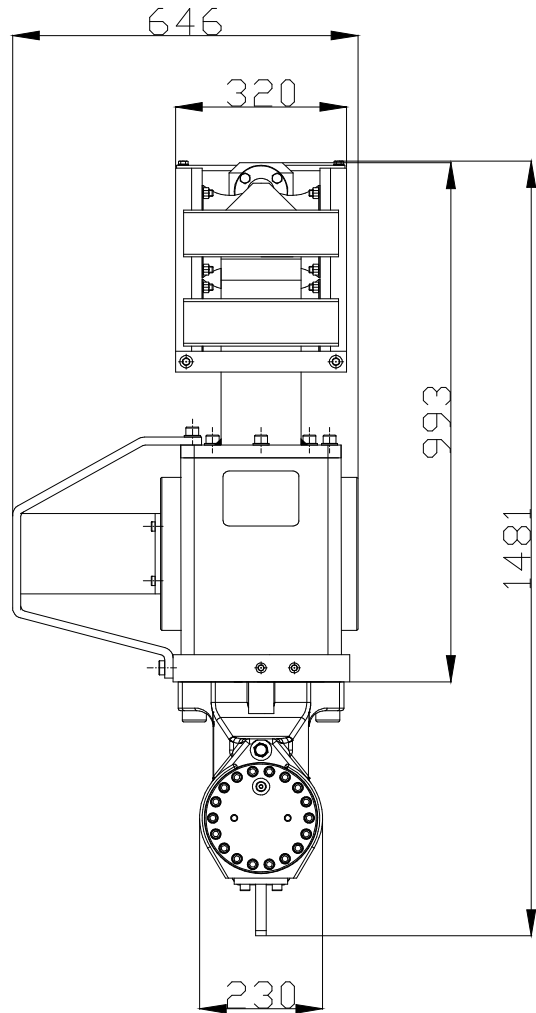
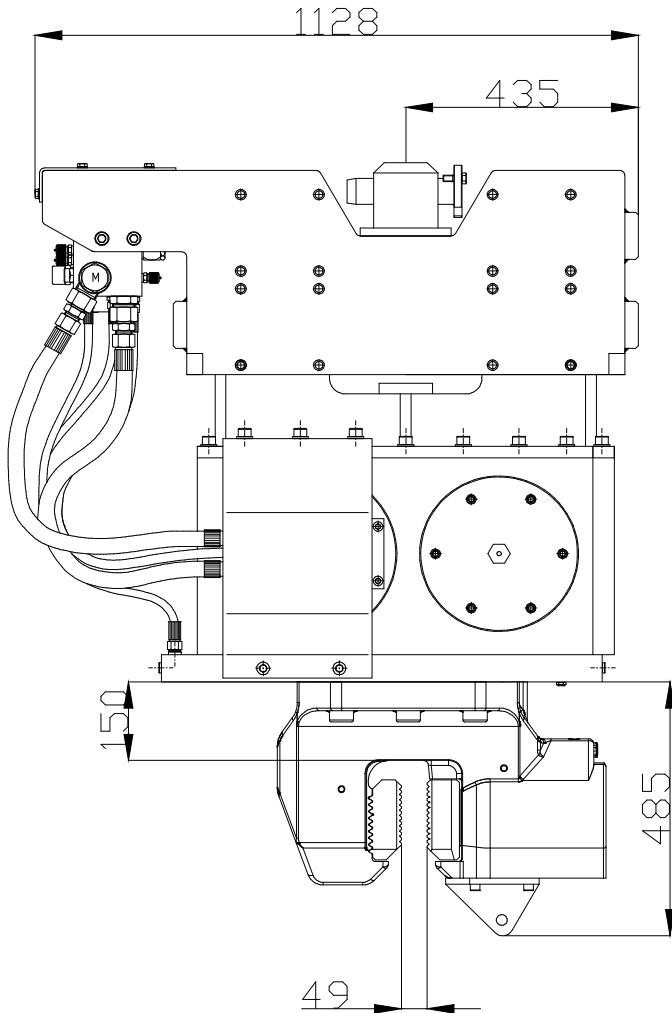
| | | | |
|----------------------------------|-----------|-------------------------|--------|
| Statisches Moment | 4 kgm | Klemmzange: | |
| Max. Fliehkraft | 344 kN | Universalzange | 60TU |
| Max. Drehzahl | 2800 rpm | Transportgew. pro Stück | 250 kg |
| Max. Amplitude ohne 60TU | 12.3 mm | Rohrklemmzange | N/A |
| Max. Amplitude mit 60TU | 8.9 mm | Transportgew. pro Stück | N/A kg |
| Max. Statische Zugkraft | 120 kN | | |
| Max. Betriebsdruck | 350 bar | Aggregat: | |
| Max. Fördermenge | 168 l/min | Modell | N/A |
| Zwangsschmierung | nein | | |
| Dyn. Gewicht ohne 60TU | 650 kg | Schlauchsatz: | |
| Dyn. Gewicht mit 60TU | 900 kg | Länge | N/A m |
| Gesamtgew. ohne 60TU & Schläuche | 1280 kg | Transportgewicht (±) | N/A kg |



Spécifications

ICE 428B

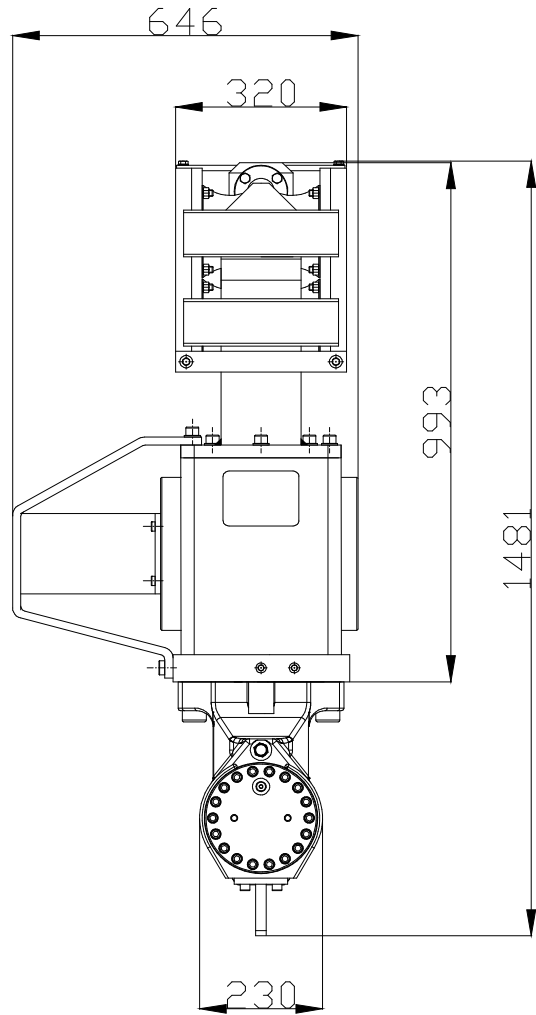
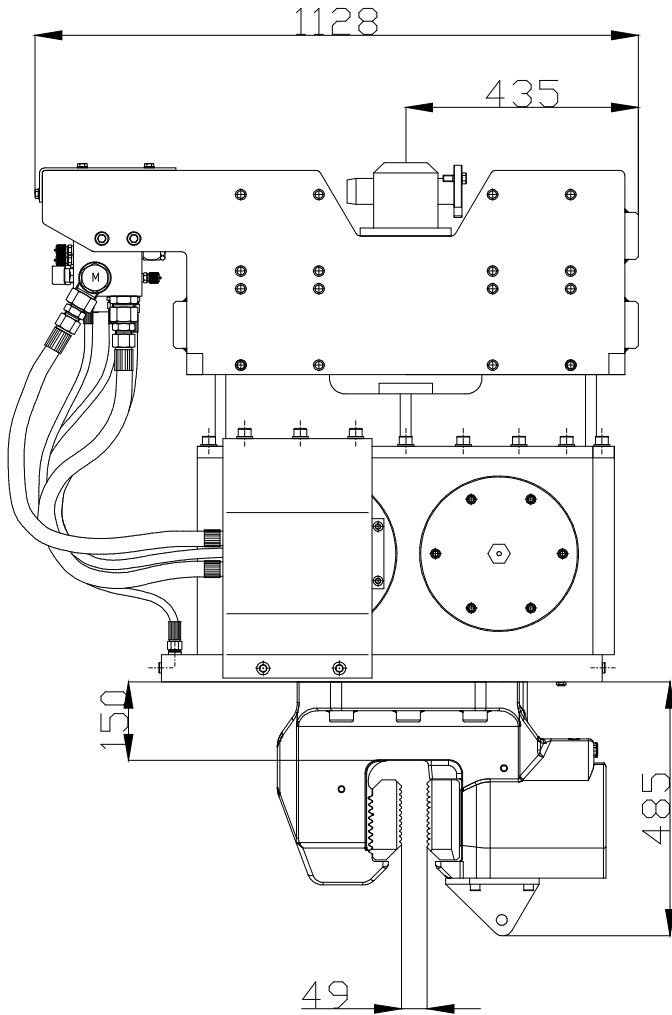
| | | | |
|--------------------------------|-----------|------------------------------|--------|
| Moment excentrique | 4 kgm | Pinces: | |
| Max. force centrifuge | 344 kN | Pince palplanche | 60TU |
| Max. fréquence | 2800 rpm | Poids de transport par pièce | 250 kg |
| Max. amplitude sans 60TU | 12.3 mm | Pince tube | N/A |
| Max. amplitude avec 60TU | 8.9 mm | Poids de transport par pièce | N/A kg |
| Force de traction statique | 120 kN | | |
| Pression de travail max. | 350 bar | Groupe hydraulique: | |
| Débit d'huile max. | 168 l/min | Modèle | N/A |
| Huile lubrifiante | no | | |
| Poids dynamique sans 60TU | 650 kg | Jeu de tuyau: | |
| Poids dynamique avec 60TU | 900 kg | Longueur | N/A m |
| Poids total sans 60TU & tuyaux | 1280 kg | Poids de transport (±) | N/A kg |



Specificaties

ICE 428B

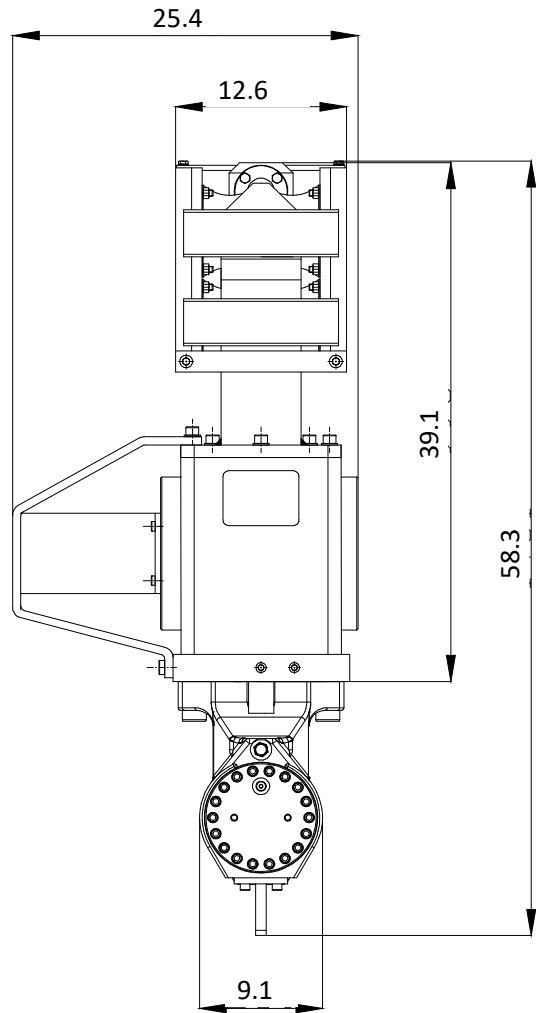
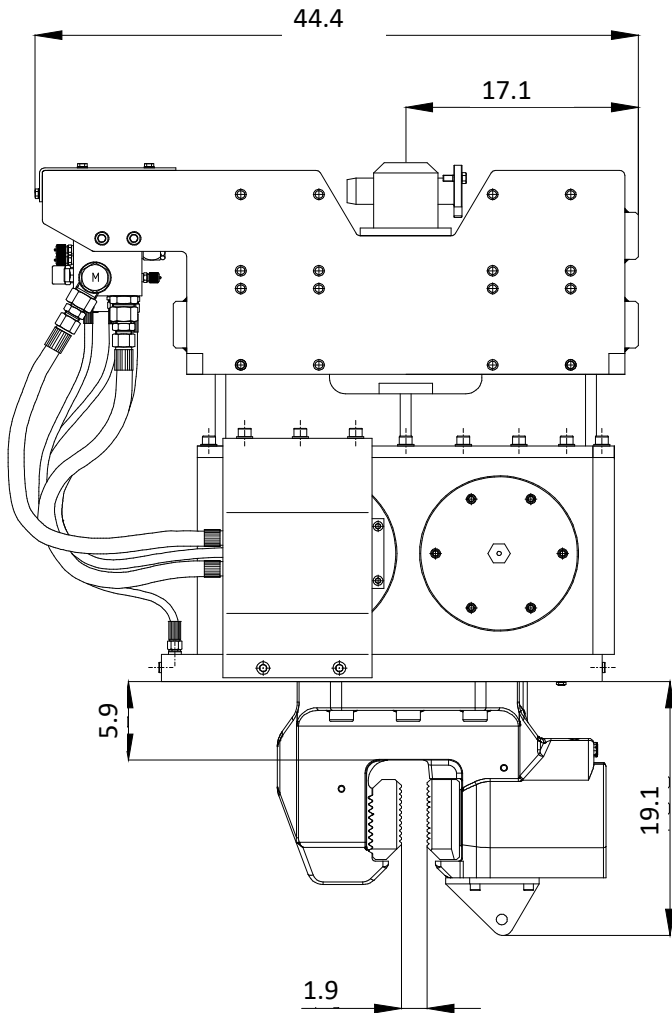
| | | | |
|------------------------------------|-----------|---------------------------|--------|
| Excentrisch moment | 4 kgm | Klemmen: | |
| Max. centrifugaalkracht | 344 kN | Damwandklem | 60TU |
| Max. toerental | 2800 rpm | Transportgewicht per klem | 250 kg |
| Max. amplitude excl. 60TU | 12.3 mm | Pijpenklem | N/A |
| Max. amplitude incl. 60TU | 8.9 mm | Transportgewicht per klem | N/A kg |
| Max. statische trekkracht | 120 kN | | |
| Max. werkdruk | 350 bar | Aggregaat: | |
| Max. oliedoorstroming | 168 l/min | Model | N/A |
| Geforceerde smering | nee | | |
| Dynamisch gewicht excl. 60TU | 650 kg | Slangenset: | |
| Dynamisch gewicht incl. 60TU | 900 kg | Lengte | N/A m |
| Totaalgewicht excl. 60TU & slangen | 1280 kg | Transportgewicht (±) | N/A kg |



Specificatii

ICE 428B

| | | | |
|--|-----------|---------------------------------|--------|
| Moment excentric | 4 kgm | Menghina: | |
| Forta centrifuga maxima | 344 kN | Menghina pentru palplanse | 60TU |
| Frecventa maxima | 2800 rpm | Greutatea transportului pe buc. | 250 kg |
| Amplitudinea maxima excluzand 60TU | 12.3 mm | Menghina dubla | N/A |
| Amplitudinea maxima inclusiv 60TU | 8.9 mm | Greutatea transportului pe buc. | N/A kg |
| Tractiune statica maxima | 120 kN | | |
| Presiunea maxima de lucru | 350 bar | Unitate de putere: | |
| Debit maxim de ulei | 168 l/min | Model | N/A |
| Ungere fortata | nu | | |
| Greutate dinamica excluzand 100TU | 650 kg | Set furtun: | |
| Greutate dinamica inclusiv 100TU | 900 kg | Lungime | N/A m |
| Greutate totala excl. 60TU & furtunuri | 1280 kg | Greutatea transportului (±) | N/A kg |



Specifications

ICE 428B

| | | | |
|--------------------------------------|----------------|----------------------------|---------|
| Eccentric moment | 0-347.2 lbs in | Clamps: | |
| Max. centrifugal force | 0-38.7 US tn | Sheet pile clamp | 60TU |
| Max. frequency | 2800 rpm | Transport weight per piece | 551 lbs |
| Max. amplitude excluding 100TU | 0.48 in | Double clamps | N/A |
| Max. amplitude including 100TU | 0.35 in | Transport weight per piece | N/A lbs |
| Max. static line-pull | 12.2 US tn | | |
| Max. operating pressure | 5076 psi | Powerpack: | |
| Max. oil flow | 44 gal/min | Model | N/A |
| Forced lubrication | no | | |
| Dynamic weight excluding 100TU | 1433 lbs | Hose set: | |
| Dynamic weight including 100TU | 1984 lbs | Length | N/A ft |
| Total weight excluding 100TU & hoses | 2822 lbs | Transport weight (±) | N/A lbs |