



**WOLTMAN 40 PR**

## **WOLTMAN PILING & DRILLING RIGS**

**High capacity, Very quick to assemble,** *Fast and efficient,*  
**Very reliable, CAT engine**

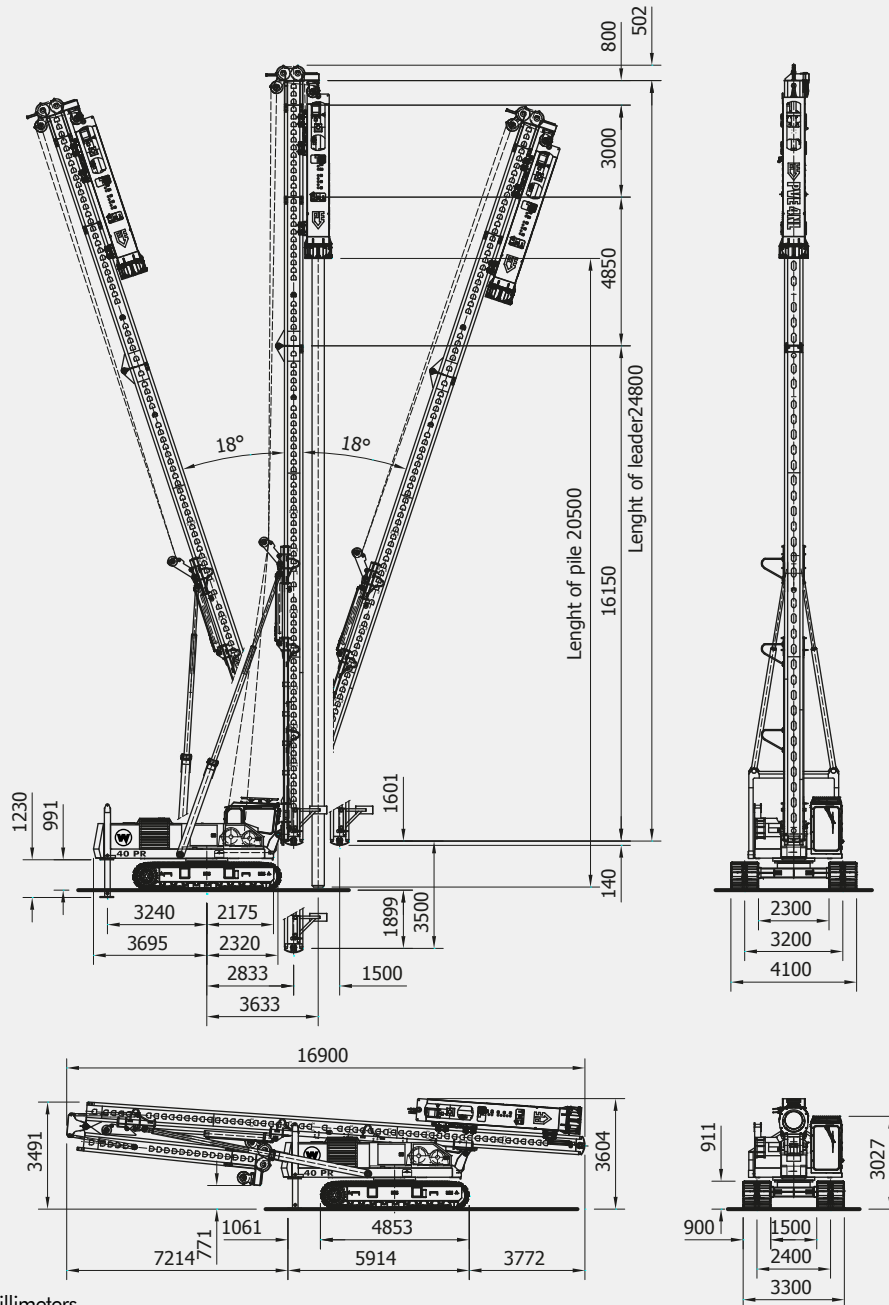
**DIESEKO GROUP**

 **WOLTMAN**  
PILING & DRILLING RIGS

# WOLTMAN 40 PR

Woltman is continuously improving their range of equipment. Developments in relation to emission standards and fuel efficiency might result in different specifications. No rights can be attached to the dimensions and specifications mentioned on this leaflet because they might have changed without further notification. All data is subject printing and conversion errors.

## TECHNICAL SPECIFICATIONS



All dimensions are in millimeters

### Operational specifications

Recommended hammer size	PVE	4NL/5NL		
Max. pile + hammer weight*	ton	13	lbs	28,660
Leader length std. (max.)	mtr	21,8 (24,8)	ft	71.5 (81.4)
Max. pile length (max.)	mtr	17 (20)	ft	55.8 (65.6)
Hammer winch	ton	10	lbs	22,046
Pile winch	ton	7	lbs	15,432
Operational weight incl. 4NL	ton	48	lbs	105,822
Max. oil flow	l/min	390	g/min	103
Max. pressure	bar	320	psi	4,641

### Weights

Transport weight excl. hammer	ton	40	lbs	88,185
Transport weight w/o counterweight	ton	35	lbs	77,162
Transport weight incl. PVE 4NL	ton	48	lbs	105,822

### Rig specifications

Engine	Caterpillar C-7.1		
Engine output	kW	183	HP 250
Hydraulics	Bosch Rexroth		
Hydraulic system	Openloop		

\* subject to capacity charts