



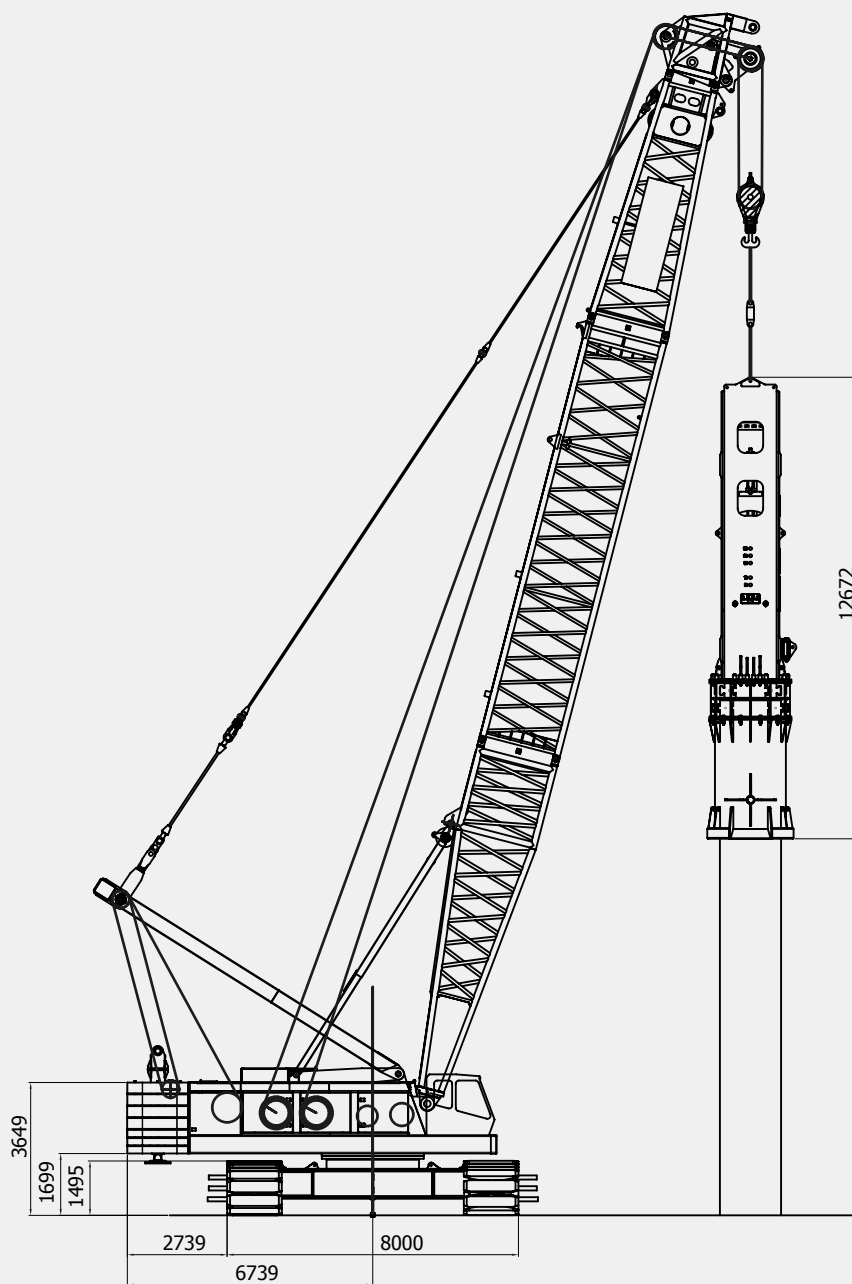
WOLTMAN PILING & DRILLING RIGS

Versatile, **Dedicated design,**
Less deckspace required with
PDS system, High stability,
Heavy Duty boom,

WOLTMAN PDS 3000

Woltman is continuously improving their range of equipment. Developments in relation to emission standards and fuel efficiency might result in different specifications. No rights can be attached to the dimensions and specifications mentioned on this leaflet because they might have changed without further notification. All data is subject printing and conversion errors.

TECHNICAL SPECIFICATIONS



All dimensions are in millimeters

Operational specifications

Max. lift capacity w/o leader	300 tons @ 5 m	661,386 tons @ 16.4 ft
Max. pile + hammer weight*	ton 100	lbs 220,462
Leader length standard	mtr 55	ft 180.5
Leader length max	mtr 60	ft 196.9
Boom length standard	mtr 54	ft 177.2
Boom length optional	mtr 60-80	ft 196.9-262.5
Capacity main winches	ton 20	lbs 44,092
Capacity auxiliary	ton 15	lbs 33,069
Capacity leader winch	ton 20	lbs 44,092

Weights

Operational weight w/o leader	ton	265	lbs	584,224
Weight in PDS config. excl. tools	ton	350	lbs	771,617
Total counterweight	ton	105	lbs	231,485
Transport weight excl. boom	ton	91	lbs	200,620

Rig specifications

Engine	Caterpillar C13 Stage 4		
Engine output	kW	350	HP 475
Hydraulic system	Bosch Rexroth		
Hydraulic system	Open Loop		

* subject to capacity charts