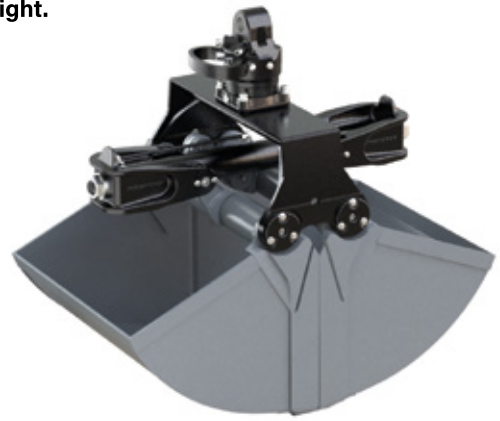


Robust clamshell bucket for excavators up to 10t/22000lbs operating weight.

- ▷ **Long life** is ensured due to the use of 500 HB steel in the manufacture of cutting edges.
- ▷ **Reduced wear** resulting from generously dimensioned bearing system.
- ▷ **Maximum loading height** is achieved through the compact design.
- ▷ **Excellent digging characteristics** are the result of high closing forces (37kN/8140lbf at an operating pressure of 32MPa/4640psi; varies depending on width).



Clamshell Bucket C10H

Type	Width E (mm/in)	Opening A (w/o teeth) (mm/in)	Height C max. (incl. teeth)(mm/in)	Volume (liter/c.y.)	Number of teeth	Weight (kg/lbs)	Capacity (kg/lbs)
C10H-40	400 / 15.7	1425 / 56.1	1150 / 45.2	170 / 0.22	3	285 / 627	3000 / 6600
C10H-50	500 / 19.6	1425 / 56.1	1150 / 45.2	220 / 0.29	5	305 / 671	3000 / 6600
C10H-65	650 / 25.5	1425 / 56.1	1150 / 45.2	290 / 0.38	5	320 / 704	3000 / 6600
C10H-80	800 / 31.4	1425 / 56.1	1150 / 45.2	355 / 0.46	9	345 / 759	3000 / 6600
C10H-100	1000 / 39.3	1425 / 56.1	1150 / 45.2	450 / 0.59	9	375 / 825	3000 / 6600
C10H-120	1200 / 47.2	1425 / 56.1	1150 / 45.2	540 / 0.71	9	400 / 880	3000 / 6600

Package consists of: clamshell bucket, bolt-on teeth, **KINSHOFER** rotator, non-return valve and hose guard

KINSHOFER Rotator

Continuous rotation and two oil passages. Overload protection is ensured by pressure relief valves.

Type	Upper dimension (width x pin-Ø) (mm/in)	Torque (Nm/ft.lbs)	Bending moment max. (Nm/ft.lbs)
KM 06 F140-40	84 x 40 / 3.3 x 1.5	1000 / 737	8500 / 6268

Accessories

Type	Description
KM 501 6t-12t	upper suspension without pendulum damper
KM 511 6t-12t	upper suspension with pendulum damper
KM 510 6t-12t	single pendulum damper to upgrade the upper suspension KM 501 6t-12t / 13200-26400lbs
KSW08 cardanic	adapter for system L-Lock KMS08L/KHS08L incl. cardan link excl. pendulum damper – up to 12t / 26400lbs
KSW08 cardanic-P	adapter for system L-Lock KMS08L/KHS08L incl. cardan link incl. pendulum damper – up to 12t / 26400lbs
KM 680 9t-12t	scrapper

Requirements of carrier machine

Operating pressure (open/close):	max. 32 MPa (320 bar) / 4640 psi
Recommended pump capacity (open/close):	40 - max. 120 l/min / 10.5 - max. 32 GPM
Operating pressure (rotate):	max. 32 MPa (320 bar) / 4640 psi
Recommended pump capacity (rotate):	15 - max. 50 l/min / 4 - max. 13 GPM

Technical drawing

