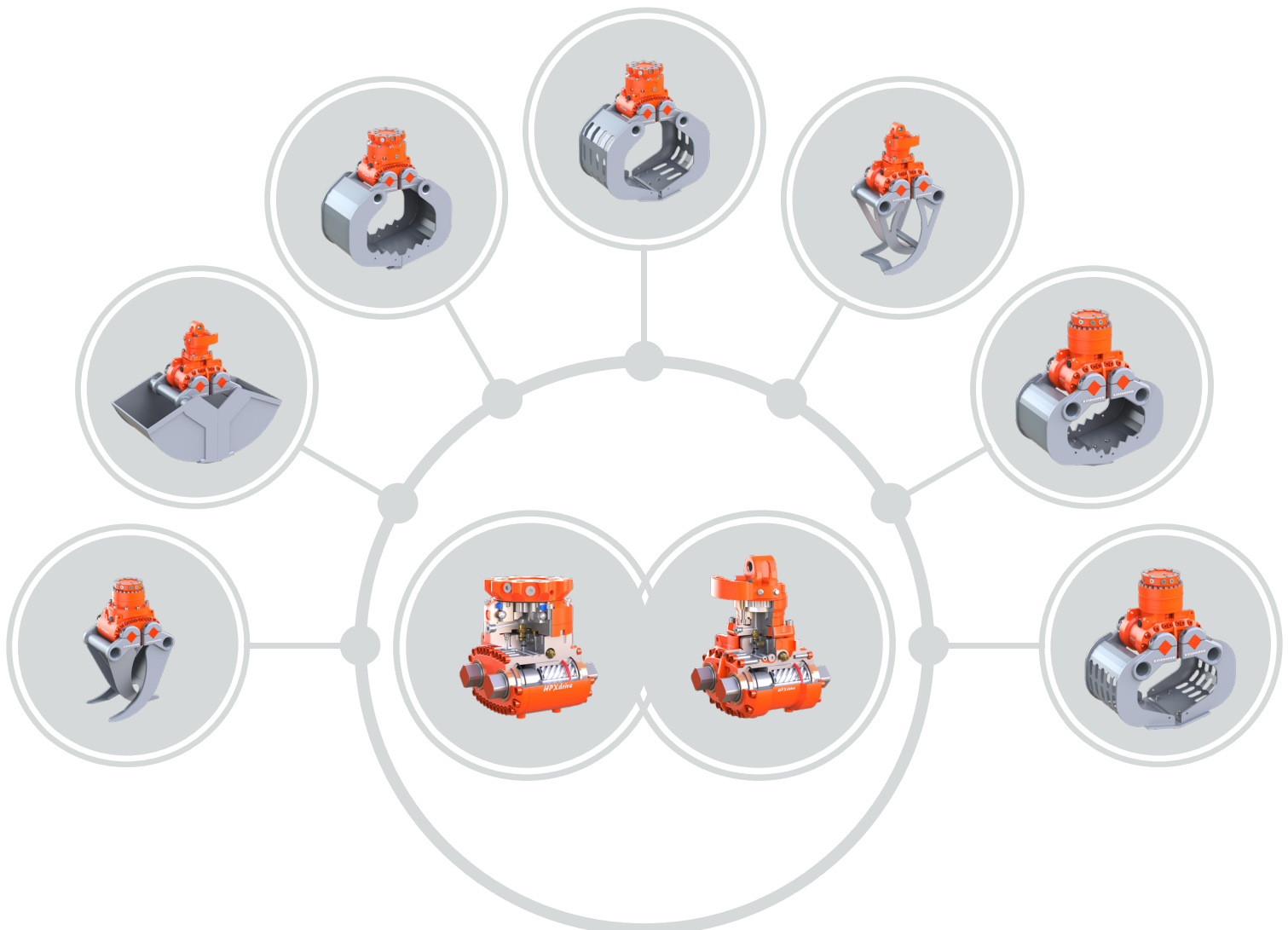




HPXdrive Technology Excavator

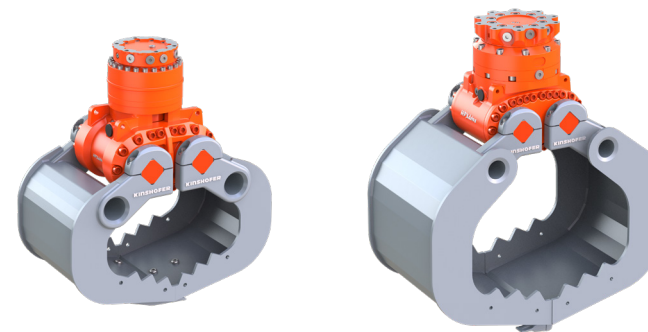
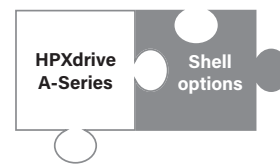


A-SERIES

The multi purpose grabs are true multi-functional tools: positioning natural rocks, picking up brushwood & branches, easy sorting tasks. The sophisticated ergonomics and the design of the shells enable loading, sorting, digging and demolition operations with maximum efficiency. Bolt-on side plates and a 4-point soft gripping device for the handling of e.g. manhole rings provide even more flexibility.

POSSIBLE SHELL COMBINATIONS:

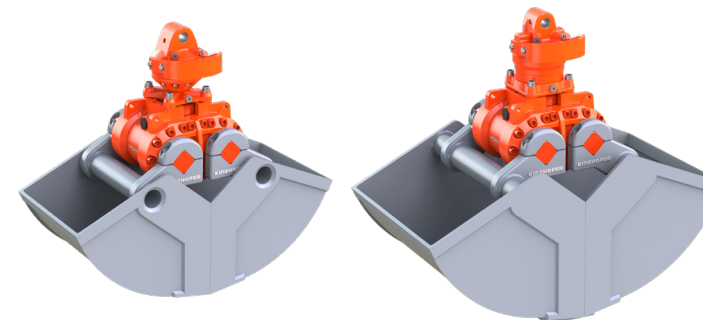
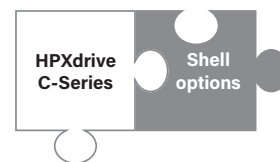
- ▷ A04HPX – D04HPX
- ▷ A06HPX – D06HPX – T06HPX-3Z
- ▷ A09HPX – D09HPX – T09HPX-3Z

**C-SERIES**

The clamshell buckets (C05HPX & C08HPX) prove their value especially during digging or backfilling tasks. The closing forces are constant and high during the entire opening and closing process.

POSSIBLE SHELL COMBINATIONS:

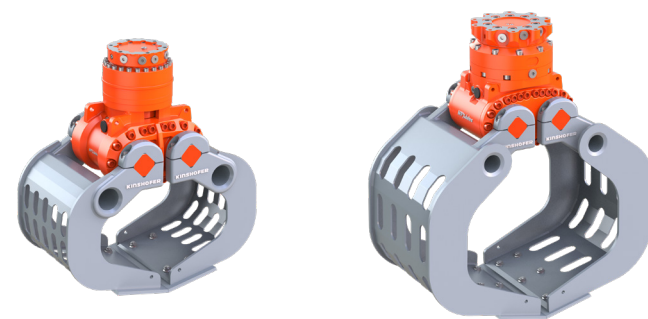
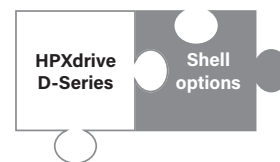
- ▷ C05HPX – R05HPX
- ▷ C08HPX – R08HPX

**D-SERIES**

The strong demolition and sorting grabs are well-suited for demolition and separation of all kinds of building materials and waste. The robust rotations with direct internal hydraulic connections guarantee a precise position, an optimum force transmission and prevent damages.

POSSIBLE SHELL COMBINATIONS:

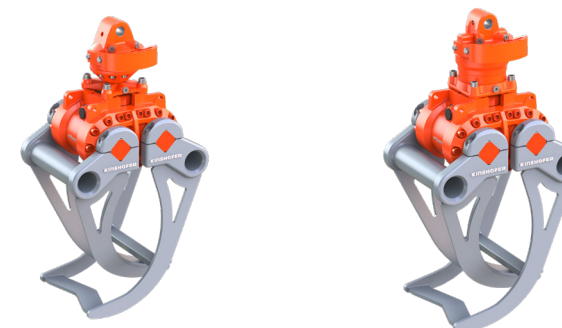
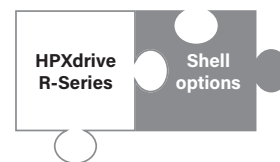
- ▷ D04HPX – A04HPX
- ▷ D06HPX – A06HPX – T06HPX-3Z
- ▷ D09HPX – A09HPX – T09HPX-3Z

**R-SERIES**

The rock grabs are ideal for the gripping and positioning of natural stones and rocks. Thanks to the constant closing forces during the entire gripping process and the integrated non-return valve, a safe positioning of natural stones and rocks is no problem, even in the case of pressure drops.

POSSIBLE SHELL COMBINATIONS:

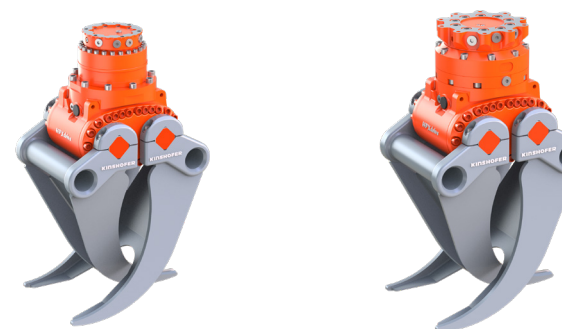
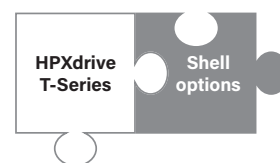
- ▷ R05HPX – C05HPX
- ▷ R08HPX – C08HPX

**T-SERIES**

The timber grabs combine the reliability of the revolutionary HPXdrive with robust timber tines. Clamping single or several trunks is no problem at all thanks to the high constant closing forces.

POSSIBLE SHELL COMBINATIONS:

- ▷ T06HPX-3Z – A06HPX – D06HPX
- ▷ T09HPX-3Z – A09HPX – D09HPX



Functional exchange, depending on demands!

During times of growing costs and environmental awareness, efficient working is getting more and more important. The HPXdrive stands out thanks to its extended lifetime compared to a conventional cylinder-driven grab. Not only the maintenance downtimes are reduced but also the operational expenses. The integrated shell exchange system and the different available shell options provide for a higher flexibility on the one hand, and lower the asset cost for additional attachments on the other hand.

CUSTOMER BENEFITS:**FLEXIBLE OPERATION**

Fast and uncomplicated response to requirements to be more competitive.

LOW MAINTENANCE

No greasing points at the HPXdrive that need to be lubricated on a daily basis, saving time and maintenance costs.

LESS WEAR

The compact and extremely robust design without hydraulic cylinders or short hoses lower the risk of damages.

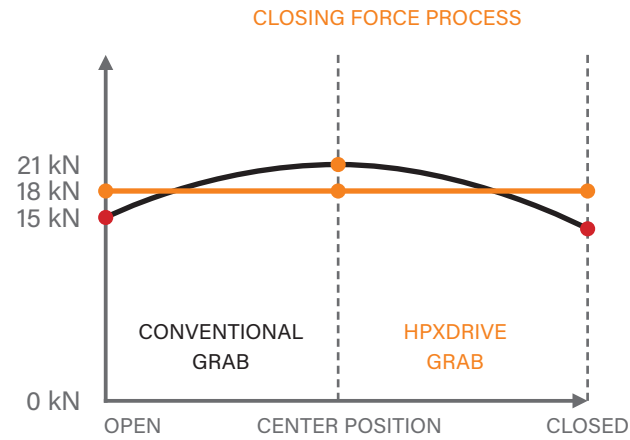
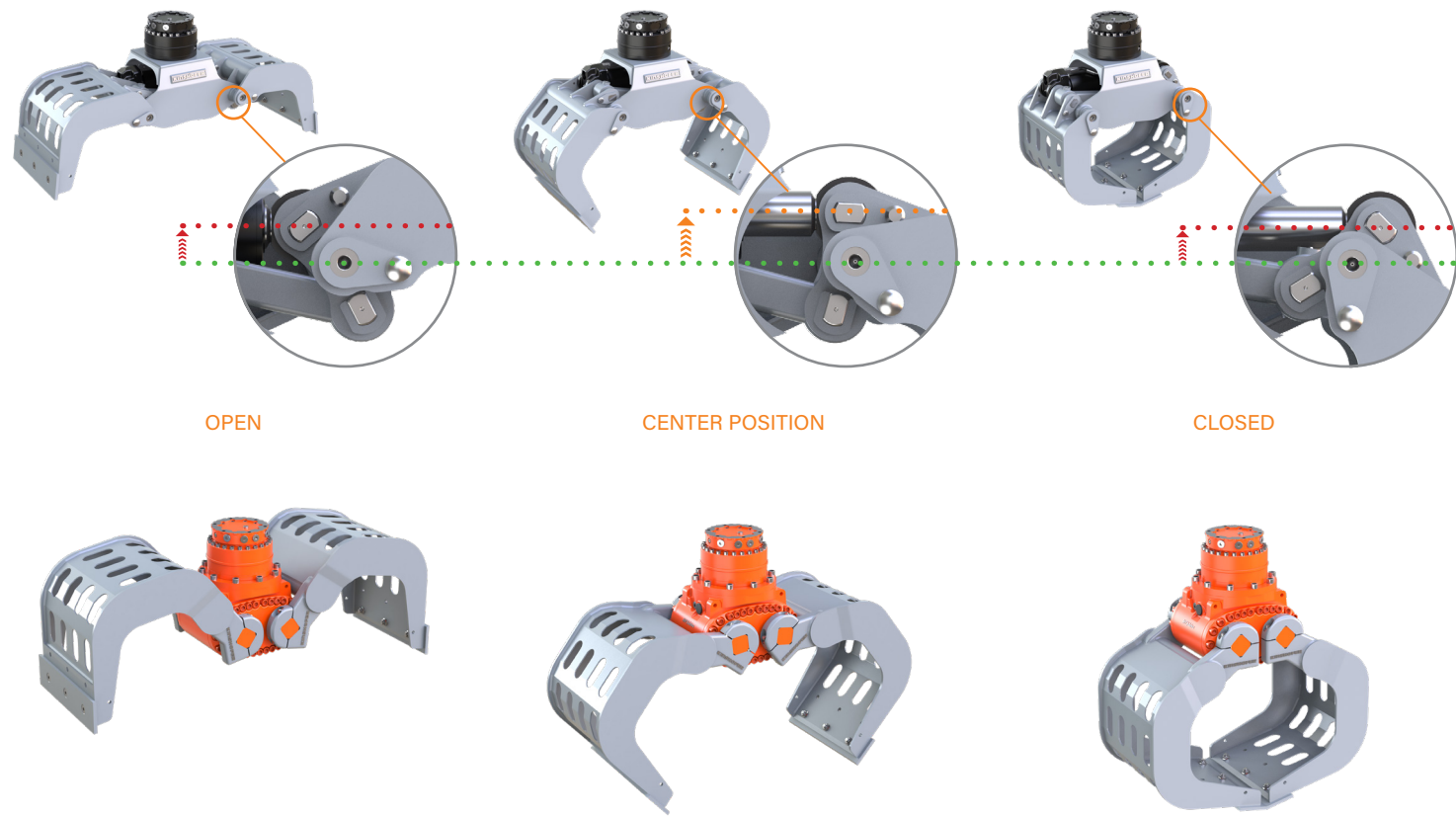
HIGHER EFFICIENCY

More powerful working thanks to constant closing forces during the entire gripping performance. The tasks can thus be finished faster and the wear is kept to a minimum.

Compact design



The compact and very robust design of the HPXdrive unit has no greasing points and combined with a KINSHOFER directly mounted rotator, there are no short connecting hoses required anymore (internal hydraulic connections).



Hydraulic drive unit HPXdrive

CLOSING FORCE

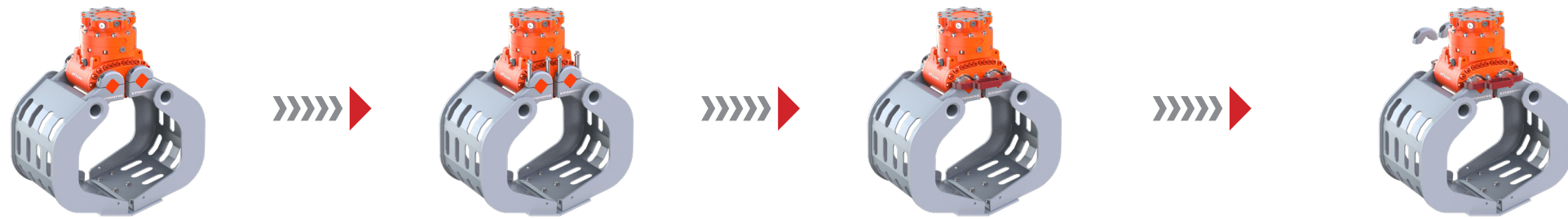
Compared to conventional cylinder grabs, the closing force of the HPXdrive is high and constant during the entire operation. The movement of the arms is generated by two hollow shafts, which run oppoed and have a helix thread, hydraulically driven by a single piston. The resulting closing force is always the same no matter the position of the shells.

STARTING POSITION:
Shells are orderly fixed

STEP 1:
Loosen 4 retaining bolts on one side

STEP 2:
Remove loose bolts and clamping parts and place exchange aid

STEP 3:
Loosen bolts on other side, Remove bolts and clamping parts and place exchange aid

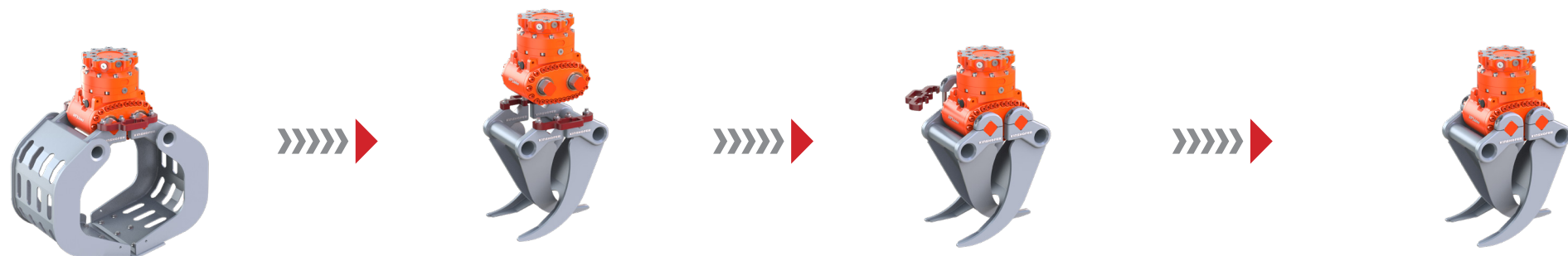


CHANGE POSITION:
HPXdrive is loose

STEP 4:
Lift HPXdrive and position above other shells

STEP 5:
First remove exchange aids and bolt on clamping parts on one side, then repeat on the other side

FINAL POSITION:
Shells are orderly fixed



Exchange of shells with HPXdrive

Thanks to the shell exchange system you are able to clearly lower the investment costs for your fleet. Just change fast and easy to the suitable shell option depending on the task. The reliable shell exchange system features an easy loosening of the shells in case of exchange and a safe and steady holding of loads during every task. Setup times can be reduced to a minimum. The flexibility of your work processes as well as your competitive abilities can be increased.

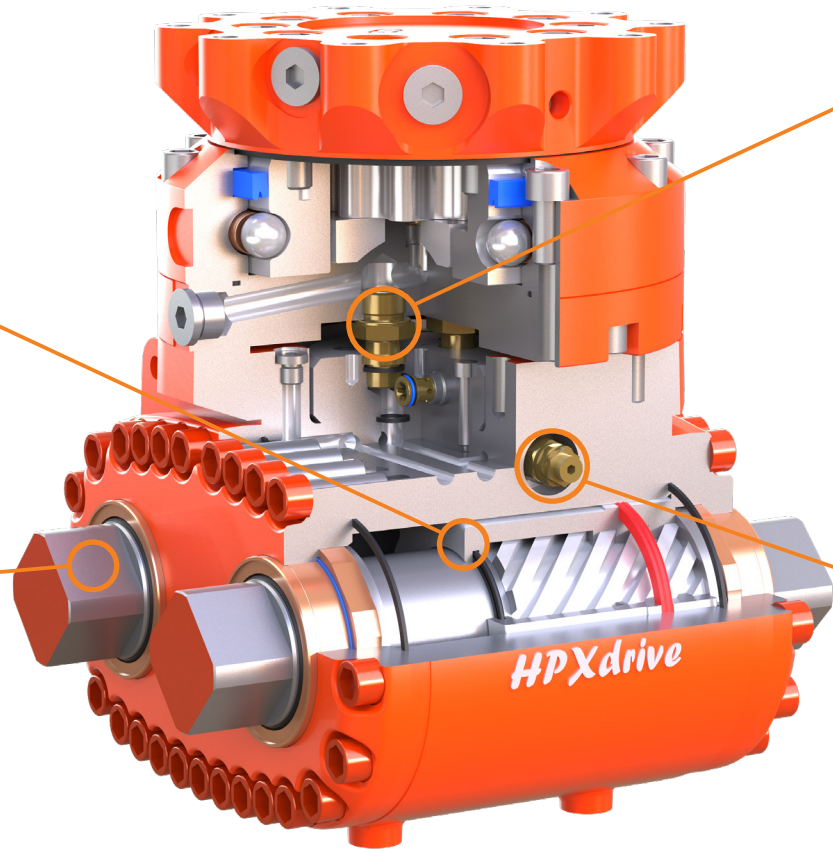
Rigid mount up to 9t

FUNCTION: SHAFT & PISTON

The linear shift of the piston is converted into a rotary motion of the two shafts by counter-rotating helix threads. The use of a compensation rod for shell synchronisation is not necessary and the generated closing forces are constant and high. They remain constant during the entire operation.

SYSTEM: EXCHANGE OF SHELLS

The hydraulic drive is equipped with a simple shell exchange system, providing for a 5-step-exchange within 10 minutes. You can change to different shells e.g. demolition grab, clamshell bucket or timber grab, using only one drive unit. The nitrided shafts and piston feature a robust surface resulting in a minimized wear.



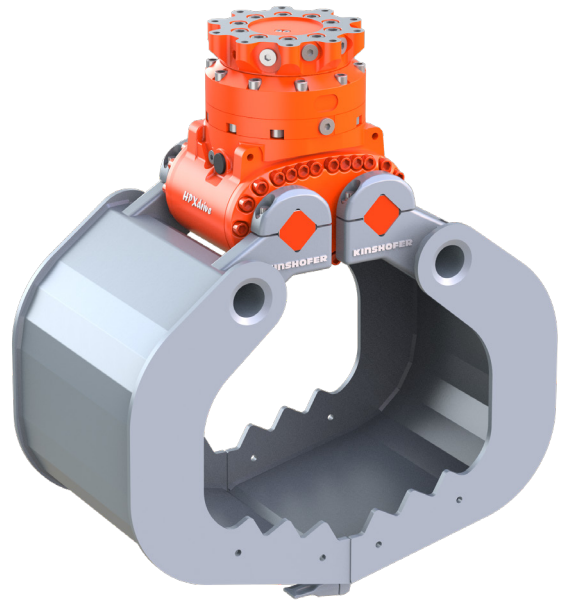
STRUCTURE: UNIT

The Kinshofer rotator and the HPXdrive form a compact and robust unit. It withstands external forces with the hydraulic connections being direct and located inside, there are no short hoses necessary. Therefore, leaks due to damaged hose cannot happen and allow the use in water protection areas. As the drive unit runs in a permanent oil bath, there is no lubrication necessary.

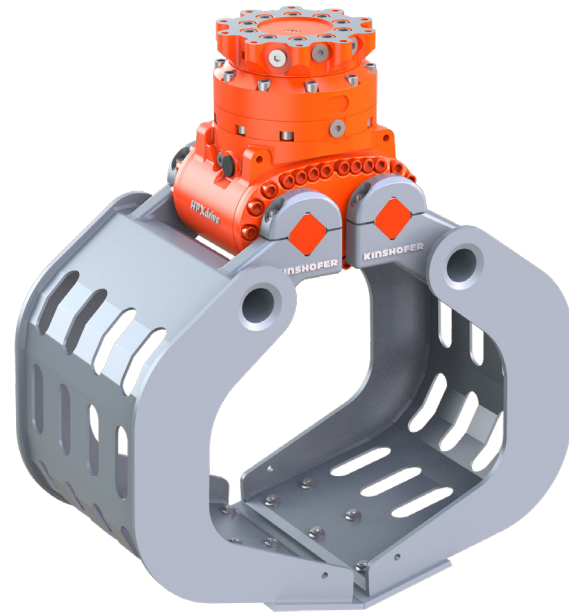
SAFETY: SAFETY VALVES



The HPXdrive is equipped with a pressure relief valve protecting the grab from overcharge. The integrated non-return valve guarantees a secure retention of loads. An installation of valves at the carrier machine is not necessary.



A-SERIES:
MULTI PURPOSE GRAB WITH HPXdrive



D-SERIES:
DEMOLITION AND SORTING GRAB WITH HPXdrive



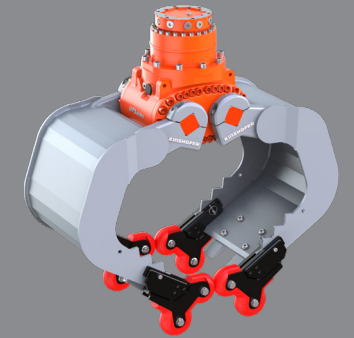
T-SERIES:
TIMBER GRAB WITH HPXdrive

Hydraulic drive unit for rigid mount up to 9t

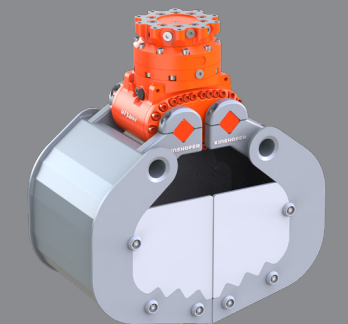
Type	Tonnage	Opening	Closing force
A04HPX	2 - 4t	1043 mm	18 kN
D04HPX	2 - 4t	1045 mm	18 kN
A06HPX	4 - 6t	1344 mm	18 kN
D06HPX	4 - 6t	1350 mm	18 kN
T06HPX	4 - 6t	1210 mm	17 kN
A09HPX	6 - 9t	1545 mm	15,5 kN
D09HPX	6 - 9t	1545 mm	15,5 kN
T09HPX	6 - 9t	1210 mm	17,5 kN

The information about the closing force refers to the max. working pressure of 250 bar.

Accessories A- and D-Series



4-POINT SOFT GRIPPING DEVICE FOR A- & D-SERIES:
For the safe handling of e.g. manhole rings without damaging them.



BOLT-ON SIDE PLATES FOR A-SERIES

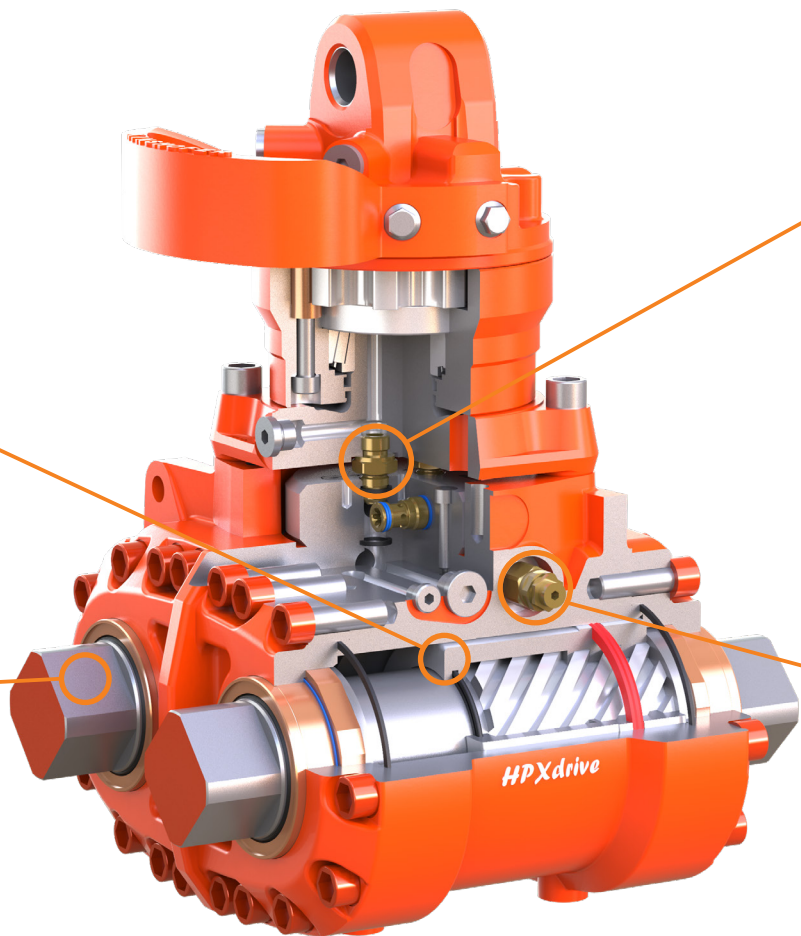
Cardanic mount up to 9t

FUNCTION:
SHAFT & PISTON

The linear shift of the piston is converted into a rotary motion of the two shafts by counter-rotating helix threads. The use of a compensation rod for shell synchronisation is not necessary and the generated closing forces are constant and high. They remain constant during the entire operation.

SYSTEM:
EXCHANGE OF SHELLS

The hydraulic drive is equipped with a simple shell exchange system, providing for a 5-step-exchange within 10 minutes. You can change to different shells e.g. demolition grab, clamshell bucket or timber grab, using only one drive unit. The nitrided shafts and piston feature a robust surface resulting in a minimized wear.



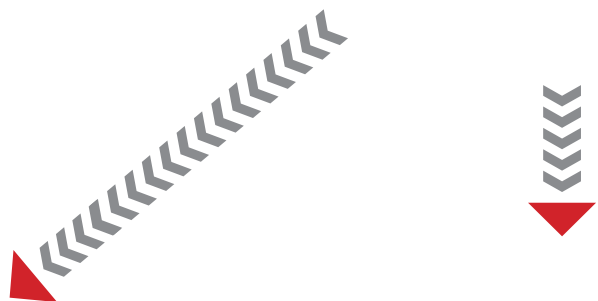
STRUCTURE:
UNIT

The Kinshofer rotator and the HPXdrive form a compact and robust unit. It withstands external forces with the hydraulic connections being direct and located inside, there are no short hoses necessary. Therefore, leaks due to damaged hose cannot happen and allow the use in water protection areas. As the drive unit runs in a permanent oil bath, there is no lubrication necessary.

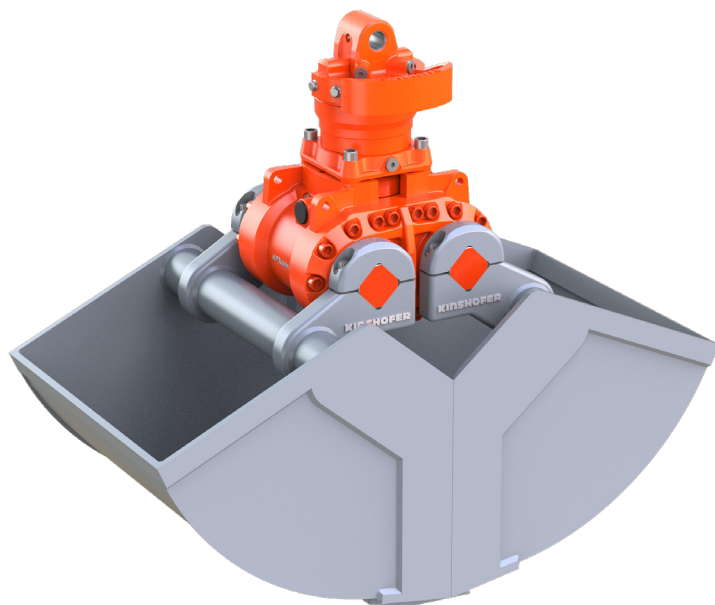
SAFETY:
SAFETY VALVES



The HPXdrive is equipped with a pressure relief valve protecting the grab from overcharge. The integrated non-return valve guarantees a secure retention of loads. An installation of valves at the carrier machine is not necessary. A hose protection for the long hydraulic hoses going to the excavator is included.



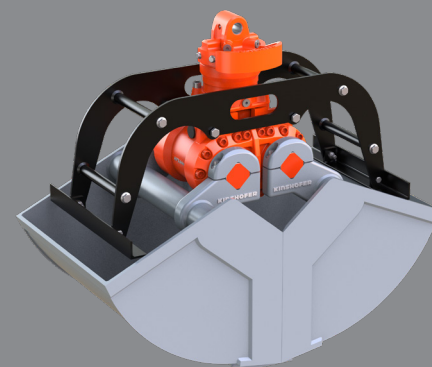
R-SERIES:
ROCK GRAB WITH HPXdrive



C-SERIES:
CLAMSHELL BUCKET WITH HPXdrive



DIGGING EXTENSION FOR C-SERIES:
NO EXTERNAL HYDRAULIC LINES!



SCRAPER C-SERIES

Hydraulic drive unit for cardanic mount up to 9t

Type	Tonnage	Opening	Closing force
C05HPX	3 - 6t	1110 mm	25 kN
C08HPX	6 - 9t	1250 mm	22 kN

R05HPX	3 - 6t	1210 mm	18 kN
R08HPX	6 - 9t	1210 mm	18 kN

The information about the closing force refers to the max. working pressure of 250 bar

Accessories C-Series

KINSHOFER Branches

Hauptsitz Deutschland:
KINSHOFER GmbH
 Raiffeisenstrasse 12
 83607 Holzkirchen
 Tel.: +49 (0) 8021 88 99 0
 Email: info@kinshofer.com
 www.kinshofer.com

United Kingdom:
KINSHOFER UK Ltd.
 4 Milton Industrial Court
 Horsfield Way, Bredbury
 Stockport, Cheshire, SK6 2TA
 Tel.: +44 (0) 161 406 7046
 Fax: +44 (0) 161 406 7014
 Email: sales-uk@kinshofer.com
 www.kinshofer.com

France:
KINSHOFER France S.A.R.L.
 8 Bis, rue Gabriel Voisin, CS 40003
 F-51688 Reims Cedex 2
 Tel.: +33 (0) 3 88 39 55 00
 Fax: +33 (0) 3 88 79 06 75
 Email: sales-france@kinshofer.com
 www.kinshofer.com

Canada:
KINSHOFER North America
 5040 Mainway Drive, Unit #11
 Burlington, ON L7L 7G5
 Tel.: +1 (905) 335-2856
 Fax: +1 (905) 335-4529
 Toll Free (North America): 1-800-268-9525
 Email: sales-northamerica@kinshofer.com
 www.kinshofer.com

United States of America:
KINSHOFER USA
 6420 Inducon Drive
 Suite G
 Sanborn, NY, 14132
 Tel.: +1 (716) 731-4333
 Toll Free (North America): 1-800-268-9525
 Email: sales-usa@kinshofer.com
 www.kinshofer.com

KINSHOFER Subsidiaries

Nederland:
DEMAREC B.V.
 De Hork 32
 NL-5431 NS Cuijk
 Tel.: +31 (0) 485 442300
 Fax: +31 (0) 485 442120
 info@demarec.com
 www.demarec.com

Sverige:
RF System AB
 Furutorpsgatan 6
 SE-288 34 Vinslöv
 Tel.: +46 (0) 44 817 07
 Fax: +46 (0) 44 859 63
 Email: info@rf-system.se
 www.rf-system.se

United Kingdom:
Auger Torque Europe Limited
 Hazleton
 Cheltenham, GL54 4DX
 Tel.: +44 (0) 1451 861 652
 Fax: +44 (0) 1451 861 660
 Email: sales@augertorque.com
 www.augertorque.com

Australia:
Auger Torque Australia Pty Ltd.
 122 Boundary Road, Rocklea
 Queensland 4106
 Tel.: +61 (0) 7 3274 2077
 Fax: +61 (0) 7 3274 5077
 Email: sales@augertorque.com.au
 www.augertorque.com.au

Australia:
Doherty Couplers & Attachments Ltd.
 PO Box 701,
 Annerley (Brisbane) QLD, 4103
 Tel.: +61 1 800 057 021
 Email: sales@dohertydirect.net
 www.dohertydirect.net

New Zealand:
Doherty Engineered Attachments Ltd.
 PO Box 9339, Greerton
 Tauranga 3142
 Tel.: +64 7 574 3000
 Fax: +64 7 574 8030
 Email: sales@dohertydirect.net
 www.dohertydirect.net

United States of America:
Solesbee's LLC
 2640 Jason Industrial Parkway
 Winston, GA 30187
 Toll Free (North America): 1-800-419-8090
 Email: sales@solesbees.com
 www.solesbees.com

中国:
Auger Torque China CO., Ltd.
 Baozhan Rd, Tongyi Industry Zone
 Dongwu, Yinzhou, Ningbo
 China 315114
 Tel.: + 86 (0) 574 8848 8181
 Fax: + 86 (0) 574 8848 8687
 Email: john.hu@attachmenttorque.com
 www.augertorque.com

Italia:
Hammer S.r.l.
 Via Oleifici dell' Italia Meridionale,
 lotto G1
 IT-70056 Molfetta BA
 Tel.: +39 080 337 5317
 Email: info@hammer.eu.com
 www.hammereurope.com

Italia:
Cangini Benne S.r.l.
 Via Savio, 29/31 47027
 IT-70056 Sarsina FC
 Tel.: +39 0547 698020
 Fax: +39 0547 698021
 Email: cangini@canginibenne.com
 www.canginibenne.com

DVS ZERT
KINSHOFER is an
 ISO 9001 certified Company.
 DVS ZERT is a registered trademark
 of DVS ZERT® e.V., Düsseldorf.





KINSHOFER
GROUP