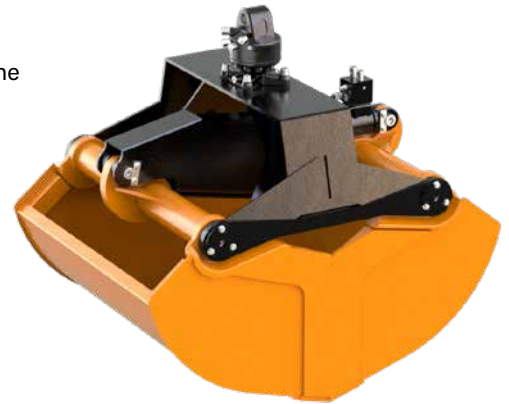


# High Volume Clamshell Bucket with Horizontal Cylinder

**KM 602**

A robust clamshell bucket for handling loose material such as sand, gravel, soil - perfectly matched to heavy duty work on vehicle mounted cranes.

- ▷ **Excellent filling characteristics** of the rugged grapple due to the special shape of the buckets and the wide separation between their axes that enables wide opening.
- ▷ **Practically no "left overs"** of the material to be picked up as the working edges are vertical when the buckets are open and allow a deep plunge into a pile of material.
- ▷ **High stability** through reinforced buckets, torsion-free frame, generously dimensioned bearing system and the use of 500 HB steel in the manufacture of cutting edges.
- ▷ **Combination of compensator mechanism and cylinder guard** has many advantages: parallel action, longer life for piston rod and seals, significant weight savings.
- ▷ **Efficient handling** with high closing forces (6160 lbf at an operating pressure of 3750 psi).



## Package High Volume Clamshell Bucket KM 602 c

Type	Volume (c.y.)	Width B (in)	max. Opening (in)	No. of teeth (optional)	Self weight (lbs)	Closing force (lbf)	Load capacity (lbs)
KM 602-400 c	0.52	32	72	9	1023	6160	6600
KM 602-500 c	0.65	39	72	9	1122	6160	6600

**Package consists of:** high volume clamshell bucket, rotator KM 04 F, short connecting hoses KM 203 01, upper suspension KM 501 4500, (without teeth), non-return valve

## High Volume Clamshell Bucket KM 602

Type	Volume (c.y.)	Width B (in)	max. Opening (in)	Number of teeth (optional)	Self weight (lbs)	Closing force (lbf)	Load capacity (lbs)
KM 602-300	0.39	20	72	5	924	6160	6600
KM 602-400	0.52	32	72	9	990	6160	6600
KM 602-500	0.65	39	72	9	1023	6160	6600
KM 602-650	0.85	47	72	9	1056	6160	6600
KM 602-1000	1.31	47	86	9	1518	5060	6600

## Accessories

Type	Description
KM 04 F	KINSHOFER rotator for KM 602
KM 04 S	KINSHOFER shaft rotator for precise positioning of the load - up to 9900 lbs load capacity
KM 04 S68-30US	KINSHOFER shaft rotator for heavy duty tasks - up to 9900 lbs load capacity
KM 505	quick change system for shaft-type rotator KM 04 S
KM 505 HD	quick change system for shaft-type rotator KM 04 S68-30US
KM 502 4500	reduction link between rotator and grapple
KM 685 06 eye set 2	welded eyes
KM 685 07 set	wear plates to protect horizontal cutting edges (2 pieces)

## Requirements of Truck Crane

**Operating pressure:** 3750 - 5350 psi  
**Oil flow:** 9 - max. 20 GPM

## Technical Drawings

**Pump capacity/Operating pressure**  
 > 10.56 GPM / 3744 psi  
 ≤ 10.56 GPM / 4608 psi

