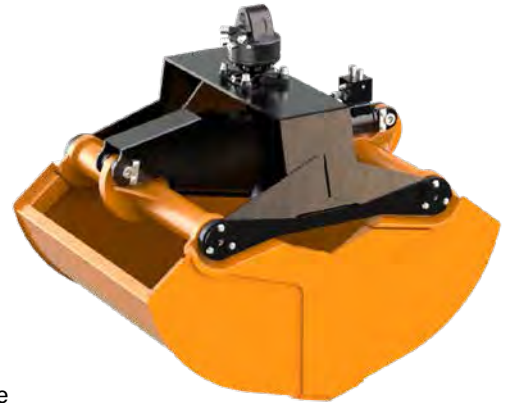


A robust clamshell bucket for handling loose material as sand, gravel, soil - perfectly matched to heavy duty work on vehicle mounted cranes.

- ▷ **Excellent filling characteristics** of the rugged grapple due to the special shape of the buckets and the wide separation between their axes that enables wide opening.
- ▷ **Practically no "left overs"** of the material to be picked up as the working edges are vertical when the buckets are open and allow a deep plunge into a pile of material.
- ▷ **High stability** through reinforced buckets, torsion-free frame, generously dimensioned bearing system and the use of 500 HB steel in the manufacture of cutting edges.
- ▷ **Combination of compensator mechanism and cylinder guard** has many advantages: parallel action, longer life for piston rod and seals, significant weight savings.
- ▷ **Efficient handling** with high closing forces (28 kN at an operating pressure of 26 MPa).



Packages high volume clamshell bucket KM 602 c

Type	Volume (litre)	Width E (mm)	Opening max. A (mm)	Number of teeth (optional)	Self weight (kg)	Closing force (kN)	Load capacity (kg)
KM 602-400 c	400	800	1830	9	490	28	3000
KM 602-500 c	500	1000	1830	9	535	28	3000
KM 602-650 c	650	1200	1830	9	595	28	3000

Package consists of: high volume clamshell bucket, rotator KM 04 F, short connecting hoses KM 203 01, upper suspension KM 501 (4500), non-return valve

Note: UK packages of KM 602 includes KM 04 F, KM 501, KM 203 01, KM 685 06 eye set 2, KM 685 07 set

High volume clamshell bucket KM 602

Type	Volume (litre)	Width E (mm)	Opening max. A (mm)	Number of teeth (optional)	Self weight (kg)	Closing force (kN)	Load capacity (kg)
KM 602-300	300	500	1830	5	360	28	3000
KM 602-400	400	800	1830	9	425	28	3000
KM 602-500	500	1000	1830	9	465	28	3000
KM 602-650	650	1200	1830	9	515	28	3000
KM 602-1000	1000	1200	2190	9	585	23	3000

Accessories

Type	Description
KM 04 F	recommended KINSHOFER rotator for KM 602
KM 04 S68-30US	recommended KINSHOFER shaft rotator for heavy duty tasks - up to 4500 kg load capacity
KM 505 HD	quick change system HD for shaft-type rotator KM 04 S68-30US
KM 502 (4500)	reduction link between rotator and grapple
KM 685 06 hook set 2	welded hooks (2 pieces)
KM 685 06 eye set 2	welded eyes (2 pieces)
KM 685 07 set	wear plates to protect horizontal cutting edges (2 pieces)

Requirements of truck crane

Operating pressure at oil flow:

26 MPa (260 bar) at max. 75 l/min

26 - 37 MPa (260 - 370 bar) at max. 40 l/min

Technical drawings

