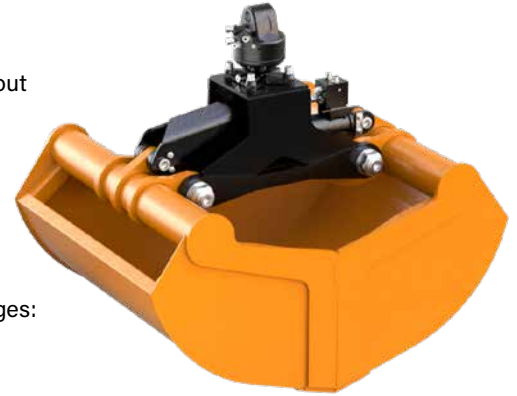


KM 622

High Volume Clamshell Bucket with Narrow Bucket Carrier

The high volume clamshell bucket KM 622 has a significant narrow frame and can therefore fulfill small digging tasks besides the handling.

- ▷ **Suitable for digging** due to the narrow frame.
- ▷ **Compact design** due to the narrow frame enables manual filling of the bucket without obstacles.
- ▷ **Practically no 'left overs'** of the material to be picked up as the working edges are vertical when the buckets are open and allow a deep plunge into a pile of material.
- ▷ **High stability** through reinforced buckets, torsion-free frame, generously dimensioned bearing system and the use of 500 HB steel in the manufacture of cutting edges.
- ▷ **Combination of compensator mechanism and cylinder guard** has many advantages: parallel action, longer life for piston rod and seals, significant weight savings.
- ▷ **Efficient handling** with high closing forces (4400 lbf at an operating pressure of 3750 psi).



Package High Volume Clamshell Bucket KM 622-400 c & KM 622-500 c							
Type	Volume	Width B	max. Opening	Number of teeth	Self weight	Closing force	Load capacity
	(c.y.)	(in)	(in)	(optional)	(lbs)	(lbf)	(lbs)
KM 622-400 c	0.52	32	66	9	836	4400	6600
KM 622-500 c	0.65	39	66	9	891	4400	6600

Package consists of: high volume clamshell bucket (w/o teeth), rotator KM 04 F, short connecting hoses KM 203 01, upper suspension KM 501 4500, non-return valve

High Volume Clamshell Bucket KM 622							
Type	Volume	Width B	max. Opening	Number of teeth	Self weight	Closing force	Load capacity
	(c.y.)	(in)	(in)	(optional)	(lbs)	(lbf)	(lbs)
KM 622-300	0.39	25	66	5	693	4400	6600
KM 622-400	0.52	32	66	9	759	4400	6600
KM 622-500	0.65	39	66	9	814	4400	6600

Accessories	
Type	Description
KM 04 F	recommended KINSHOFER rotator for KM 622
KM 04 S	KINSHOFER shaft rotator for precise positioning of the load – up to 9900 lbs load capacity
KM 04 S68-30US	KINSHOFER shaft rotator for heavy duty tasks – up to 9900 lbs load capacity
KM 505	quick change system for shaft-type rotator KM 04 S
KM 505 HD	quick change system for shaft-type rotator KM 04 S68-30US
KM 502 4500	reduction link between rotator and grapple
KM 685 06 eye set 2	welded eyes
KM 685 07 set	wear plates to protect horizontal cutting edges (2 pieces)

Requirements of Truck Crane		
Operating pressure:	3750 - 5350 psi	<div style="border: 1px solid black; padding: 5px; display: inline-block;"> ! Pump capacity / Operating pressure > 10.56 GPM / 3744 psi ≤ 10.56 GPM / 4608 psi </div>
Recommended oil flow:	9 - max. 20 GPM	

Technical Drawings

