

The Rail Grapple KM 632HPX Rail with its *HPXdrive* is used for the loading and unloading of rails, but also, with care, handle single sleepers. A non-return valve secures constant pressure even in case of unexpected pressure drop. The revolutionary *HPXdrive* technology guarantees a reliable and low maintenance attachment. The gripper is ideal for mobile loader cranes as well as for rigidly mounted loader cranes on maintenance trailers.

- ▷ **Reliability** of the HPXdrive! The movement of the arms of the grapple is generated by two hollow shafts, which run opposed and have a helix thread, hydraulically driven by a single piston. No more hydraulic cylinder.
- ▷ **Longer life cycle** up to 50%! **Self-lubrication:** The drive unit runs in a permanent oil bath. The compact design makes the HPXdrive resistant to dirt and debris.
- ▷ **Versatility** with different types of shells that can easily be refitted onto the driving unit.
- ▷ **Profitability** through low maintenance costs and longer life cycle.
- ▷ **Rotator with shaft** KM 04 S is available as an alternative, in case a quick change KM 505 (or a reduction link KM 502 or e.g. for a non-rotating hook) is required.
- ▷ **Constant closing force** (7480 lbf at 3750 psi operating pressure) during the entire opening and closing process.



Package Rail Grapple KM 632HPX Rail c with KINSHOFER Flange Rotator

Type	Length (in)	Width (in)	Height (in)	Weight (lbs)	Closing force (lbf) at 26 MPa	Load capacity (lbs)
KM 632HPX Rail c	39.4	22.1	29.1	583	7480	4400
KM 632HPX Rail + KM 505c	39.4	22.1	32.3	605	7480	4400

Package KM 632HPX Rail: rail grapple, KINSHOFER rotator KM 04 F140-30V, upper suspension KM 501 4500, non-return valve

Package KM 632HPX Rail + KM 505 consists of: rail grapple, KINSHOFER rotator KM 04 S, upper suspension KM 501 4500, KM 505 quick change system, KM 203 01 short hoses, non-return valve

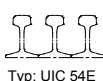
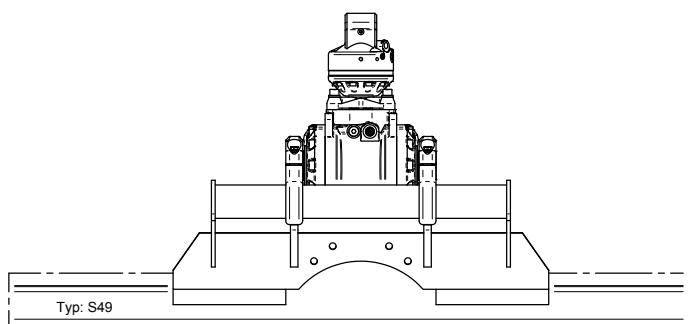
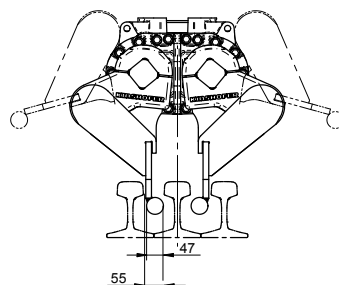
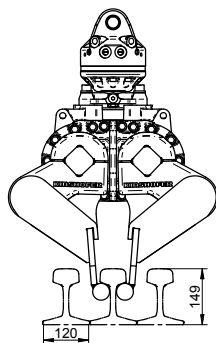
Accessoires

Type	Description
KM 04 S	KINSHOFER shaft rotator for precise positioning of the load – up to 9900 lbs load capacity
KM 04 S68-30US	recommended KINSHOFER shaft rotator for heavy duty tasks – up to 9900 lbs load capacity
KM 505	quick change system for shaft-type rotator KM 04 S
KM 505 HD	quick change system HD for shaft-type rotator KM 04 S68-30US
KM 502 4500	reduction link between rotator and grapple
KM 204 01	mobile part of hydraulic quick coupling for hose (Ø 0.39 in, 2 pieces)
KM 204 03	hydraulic quick change kit incl. mobile and fixed parts (2 pieces each) mounted with adapters to rotator
KM 632HPX Rail-S	exchangeable tines for rail grapple, incl. exchange aid – weight tines 275 lbs

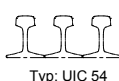
Requirements of Truck Crane

Operating pressure: 3750 psi
Recommended oil flow: 6.5 - max. 20 GPM

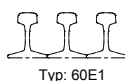
Technical Drawings



Typ: UIC 54E



Typ: UIC 54



Typ: 60E1

