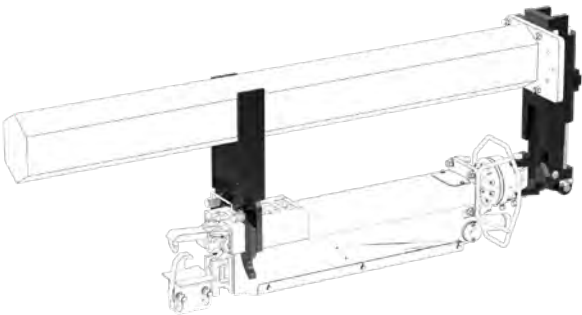
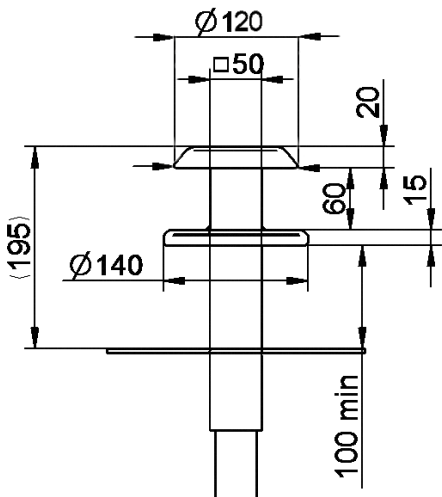


Docking device for container discharge units			
Type	Description	Tilting angle (deg.)	Self weight (kg)
KM 924	docking device for container discharge units: it allows the discharge unit to be hydraulically docked and locked onto the crane jib. When unlocked, acts as a hydraulic pendulum damper. A solenoid valve for switch-over between the hydraulic circuits is included. Please state crane model when ordering. Operating pressure max. 28 MPa (280 bar) .	90°	70

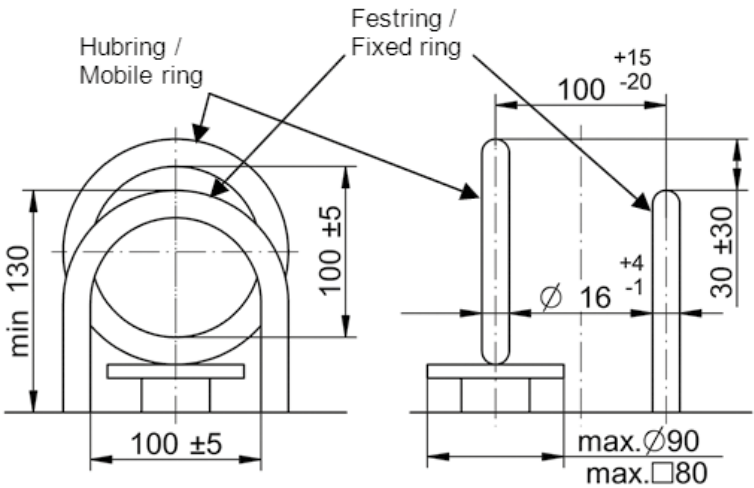


Dimensions for containers with KINSHOFER mushroom or ring system

mushroom system for containers



ring system for containers



mushroom and ring system: leverage hoisting max. 500 mm

Mushroom system at container

Usage only for containers with mushroom system with dimensions as shown above that are equipped with „ORIGINAL KINSHOFER FIXED and HOIST DISCS“. (According to DIN EN 13071-3)



Ring system at container

Usage only for containers with ring system with dimensions as shown above .
Hoist ring at container with max. lifting height 500 mm.