

# KINSHOFER Rotator Line

**KINSHOFER** manufactures rotators for truck loaders, excavators and logging operations. Years of experience in designing rotators and hydraulic load handling equipment guarantee high efficiency, long lasting rotators, specially tailored to meet your requirements.

The gear-type design ensures a very compact and powerful rotator. The precision control and braking ability is especially appreciated by operators. A grapple does not rotate unexpectedly when digging, even under maximum load and there is no need for stability compensation when handling longer lengths of timber... these are only some of the many working situations where operators appreciate the advantages of using **KINSHOFER** rotators.

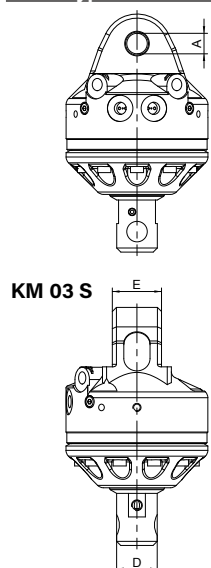
**KINSHOFER**-Rotators are the solution.



## Features of **KINSHOFER** Rotators



## Gear Type Rotator with Shaft up to 6600 lbs Load Capacity (incl. Fittings)



KM 03 S

### Type

KM 03 S\*

\* only for pallet forks

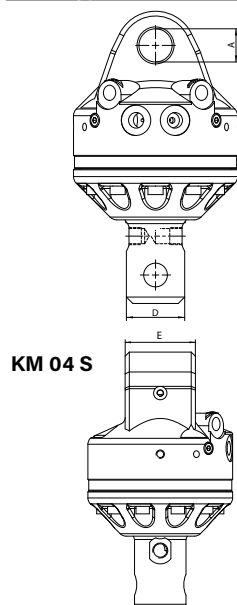
Operating pressure rotate: max. 5350 psi  
 Oil flow rotate: max. 10.5 GPM  
 Oil flow feedthrough: 20.0 GPM  
 Hydraulic coupling in: G 3/8"  
 Hydraulic coupling out: G 1/4"

Load capacity (lbs)	Shaft Ø D (in)	Upper connection (width E x pin-Ø A) (in)	Torque (ft.lbs)	Moment of deflection max. (ft.lbs)	Self weight (lbs)
6600	1.95	2.36 x 0.98	332	1290	53



KM 03 S

## Gear Type Rotator with Shaft up to 9900 lbs Load Capacity (incl. Fittings)



KM 04 S

### Type

	(lbs)	(in)	(in)	(ft-lb)	(ft-lb)	(lbs)
KM 04 S59-30	9900	2.32	3.3 x 1.2	627	2213	57
KM 04 S	9900	2.44	3.3 x 1.2	627	2213	57
KM 04 S63-30	9900	2.48	3.3 x 1.2	627	2213	57
KM 04 S68-30	9900	2.68	3.3 x 1.2	627	2213	57
KM 04 S68-30US*	9900	2.68	3.3 x 1.2	738	3318	59
KM 04 S69-30	9900	2.72	3.3 x 1.2	627	2213	57

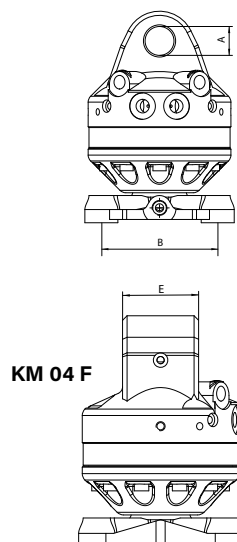
\* steel motor-head

Operating pressure rotate: max. 5350 psi  
 Oil flow rotate: max. 10.5 GPM  
 Oil flow feedthrough: 20.0 GPM  
 Hydraulic coupling: M18 x 1.5



KM 04 S69-30

## Gear Type Rotator with Flange up to 9900 lbs Load Capacity (incl. Fittings)



KM 04 F

### Type

	(lbs)	(in)	(in)	(ft.lbs)	(ft.lbs)	(lbs)
KM 04 F	9900	□ 5.5	3.3 x 1.2	627	2213	57
KM 04 F140-30US*	9900	□ 5.5	3.3 x 1.2	738	6269	68
KM 04 F140-30V**	9900	□ 5.5	3.3 x 1.2	627	2213	57

\* steel motor-head  
 \*\* additional vertical connection

Operating pressure rotate: max. 5350 psi  
 Oil flow rotate: max. 10.5 GPM  
 Oil flow feedthrough: 20.0 GPM  
 Hydraulic coupling: M18 x 1.5



KM 04 F



KM 04 F140-30US

## Product Range

## KINSHOFER Rotator Line

### Gear Type Rotator with Shaft up to 13200 lbs Load Capacity (incl. Fittings)

Type	Load capacity (lbs)	Shaft Ø D (in)	Upper connection (width E x pin-Ø A) (in)	Torque (ft.lbs)	Moment of deflection max. (ft.lbs)	Self weight (lbs)
KM 06 S68-40	13200	2.68	3.3 x 1.6	738	3318	71

**Operating pressure rotate:** max. 5350 psi  
**Oil flow rotate:** max. 10.5 GPM  
**Oil flow feedthrough:** max. 20.0 GPM  
**Hydraulic coupling in:** G 1/2"  
**Hydraulic coupling out:** M18 x 1.5



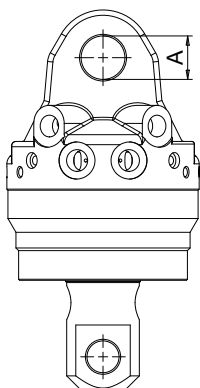
### Gear Type Rotator with Flange up to 13200 lbs Load Capacity (incl. Fittings)

Type	Load capacity (lbs)	Hole pattern of flange B (in)	Upper connection (width E x pin-Ø A) (in)	Torque (ft.lbs)	Moment of deflection max. (ft.lbs)	Self weight (lbs)
KM 06 F140-40	13200	□ 5.5	3.3 x 1.6	738	6269	75

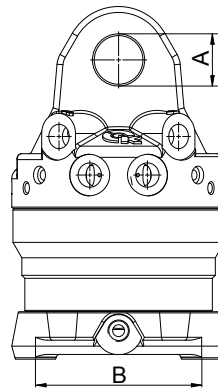
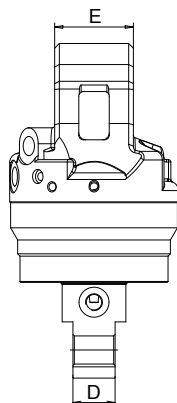
**Operating pressure rotate:** max. 5350 psi  
**Oil flow rotate:** max. 10.5 GPM  
**Oil flow feedthrough:** max. 20.0 GPM  
**Hydraulic coupling in:** G 1/2"  
**Hydraulic coupling out:** M18 x 1.5



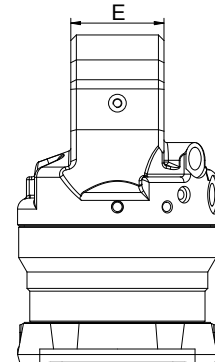
### Technical Drawings



KM 06 S68-40



KM 06 F140-40



## Gear Type Rotator with Flange and 4 Oil Ducts to operate 2 different Functions (incl. Fittings)

Type	Load capacity (lbs)	Hole pattern of flange B (in)	Upper connection (width E x pin-Ø A) (in)	Torque (ft.lbs)	Hydraulic couplings	Moment of deflection max. (ft.lbs)	Self weight (lbs)
KM 04 F140-30-4	9900	□ 5.5	3.3 x 1.2	629	M 18 x 1,5	2213	88
KM 06 F173-35-4	13200	Ø 6.8	3.2 x 1.4	738	G 1/2"	6269	99
KM 10 F173-35/2-4	22000	Ø 6.8	3.2 x 1.4	1475	G 1/2" & G 3/4"	8850	159

Operating pressure rotate:  
Oil flow rotate:  
Oil flow feedthrough:

**KM 04 F / KM 06 F**  
max. 5350 psi  
max. 10.5 GPM  
max. 20.0 GPM

**KM 10 F**  
max. 5350 psi  
max. 13.0 GPM  
max. 20.0 GPM



KM 06 F173-35-4

## Gear Type Rotator with Flange for Logging (incl. Hose Guard and Fittings)

Type	Load capacity (lbs)	Hole pattern of flange B (in)	Upper connection (width E x pin-Ø A) (in)	Torque (ft.lbs)	Moment of deflection max. (ft.lbs)	Self weight (lbs)
KM 06 F173-35	13200	Ø 6.8	3.2 x 1.4	738	6269	75
KM 10 F173-35/1	22000	Ø 6.8	3.2 x 1.4	1475	8850	136
KM 10 F173-35/2	22000	Ø 6.8	3.2 x 1.4	1475	8850	143
KM 10 F173-45	22000	Ø 6.8	3.9 x 1.8	1475	8850	150
KM 10 F173-52	22000	Ø 6.8	5.4 x 2.1	1475	8850	154

Operating pressure rotate:  
Oil flow rotate:  
Oil flow feedthrough:  
Hydraulic coupling:

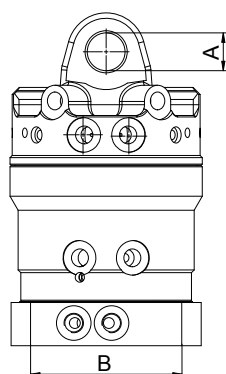
**KM 06 F**  
max. 5350 psi  
max. 10.5 GPM  
max. 20.0 GPM  
G 1/2"

**KM 10 F**  
max. 5350 psi  
max. 13.0 GPM  
max. 20.0 GPM  
G 1/2"

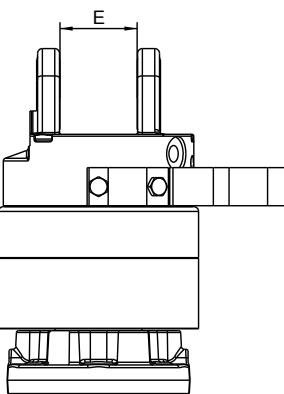
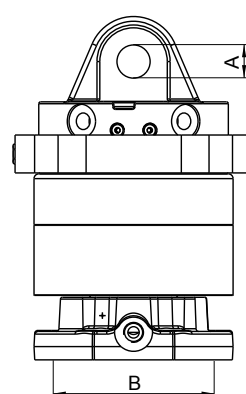
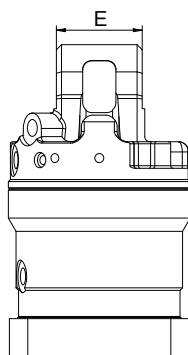


KM 10 F173-45

## Technical Drawings



KM 04 F140-30-4



KM 10 F173-35/1

## KM 501 - Upper Suspension between Rotator and Crane



An upper suspension is a cardan link between rotator and crane. It is available for all current makes and models of cranes. Please specify dimensions when ordering.

Type	Load capacity (lbs)	Self weight (approx. lbs)
KM 501 3000	up to 6600	11
KM 501 4500	up to 9900	22
KM 501 6000	up to 13200	33
KM 501 10000	up to 22000	55

## KM 511 - Upper Suspension with Pendulum Damper between Rotator and Crane



A pendulum damper reduces the horizontal swing of the attachment. It can also be retrofitted to an existing upper suspension.

Type	Load capacity (lbs)	Self weight (approx. lbs)
KM 511 4500	up to 9900	33
KM 511 6000	up to 13200	44
KM 511 10000	up to 22000	66

## KM 206 - Hose Guard



The hose guard is a metal bow to be attached onto the rotator. It is designed to protect the hoses of the rotator from damage i.e. from protruding branches

	Self weight (approx. lbs)
KM 206 hose guard for the rotator	7

## KM 502 - Reduction Link between Rotator and Grapple



A reduction link adapts a shaft type rotator to an attachment with a standard hole pattern for a flange.

Type	Load capacity (lbs)	Self weight (approx. lbs)
KM 502 3000	up to 6600	4
KM 502 4500	up to 9900	7
KM 502 6000	up to 13200	9

## Accessories for Attaching Pallet Forks etc.



KM 460 03

Type	Description	Type of rotator	Weight (approx. lbs)
KM 460 03 KM 03 S	rigid suspension link with pin for all	KM 03	18
KM 460 03 KM 04 S	KINSHOFER shaft-type rotators	KM 04	22
KM 460 08 KM 03 S	rigid hook for all	KM 03	18
KM 460 08 KM 04 S	KINSHOFER shaft rotators	KM 04	20
KM 460 04 KM 04 S	non-rotating swinging hook for all	KM 04	26
KM 460 04 KM 06 S	KINSHOFER shaft rotators	KM 06	33
KM 460 10	non-rotating swinging hook for all KINSHOFER flange rotators	KM 10 F173 (KM 04 to KM 10)	55



KM 460 04



## KM 505 - Quick Change System for Shaft-Type Rotators up to 4000 kg Load Capacity

The quick change system enables an easy exchange between different attachments. The mechanical coupling and locking is achieved by the turning motion of the rotator. You simply disconnect the quick couplings and disengage the locking device manually. The upper element of the quick change system is available for all KM 04 - shaft rotators. The KM 505 system allows the easy exchange between pallet fork and brick stack grapple for example - not suitable for heavy duty work.



Type	Description	Hole pattern of flange (in)	Self weight (lbs)
<b>KM 505</b>	complete, incl. hydraulic couplings (KM 204 01)	0.16 x Ø0.71 / □ 5.51	27
<b>KM 505 01</b>	upper element fitted to rotator incl. 2 mobile parts		11
<b>KM 204 01</b>	mobile part of hydraulic quick coupling (2 pieces) for KM 505 01		
<b>KM 505 02</b>	lower element mounted onto attachment	0.16 x Ø0.71 / □ 5.51	15
<b>KM 505 03</b>	rigid suspension link with non-rotating hook to connect to the KM 505 01		15



KM 505 01



KM 505 02



KM 505 03

## KM 505 HD - Heavy Duty Quick Change System for Shaft-Type Rotators

The quick change system enables an easy exchange between different attachments. The mechanical coupling and locking is achieved by the turning motion of the rotator. You simply disconnect the quick couplings and disengage the locking device manually. The upper element of the heavy duty quick change system is available for the KINSHOFER shaft rotators KM 04 S68-30US or KM 06 S68-40. The KM 505 system allows the easy exchange between pallet fork and clamshell bucket for example - especially developed for the heavy duty task with clamshell buckets.



Type	Description	Hole pattern of flange (in)	Self weight (lbs)
<b>KM 505 HD</b>	complete, incl. hydraulic couplings (KM 204 01)	0.16 x Ø0.71 / □ 5.51	40
<b>KM 505 01 HD</b>	upper element HD fitted to rotator incl. 2 mobile parts		15
<b>KM 204 01</b>	mobile part of hydraulic quick coupling (2 pieces) for KM 505 01 HD		
<b>KM 505 02 HD</b>	lower element HD mounted onto attachment	0.16 x Ø0.71 / □ 5.51	24
<b>KM 505 03 HD</b>	rigid suspension link with non-rotating hook to connect to the KM 505 01 HD		31



KM 505 01 HD



KM 505 02 HD



KM 505 03 HD

## KM 203 - Connecting Hoses & KM 204 - Hydraulic Quick Change Kit for Hoses



KM 203 01



KM 204 03

Type	Description
<b>KM 203 01</b>	short connecting hoses between rotator and attachment with standard fittings M 18 x 1,5 (2 pieces)
<b>KM 203 03</b>	long connecting hoses between rotator and crane - please specify dimensions (4 pieces)
<b>KM 204 01</b>	mobile part of hydraulic quick coupling for hose (Ø 0.4 in, 2 pieces)
<b>KM 204 02</b>	fixed part of hydraulic quick coupling for rotator (Ø 0.4 in, 2 pieces)
<b>KM 204 03</b>	hydraulic quick change kit incl. mobile and fixed parts (2 pieces each) mounted with adapters to rotator