

KINSHOFER manufactures rotators for truck loaders, excavators and logging operations. Years of experience in designing rotators and hydraulic load handling equipment guarantee high efficiency, long lasting rotators, specially tailored to meet your requirements.

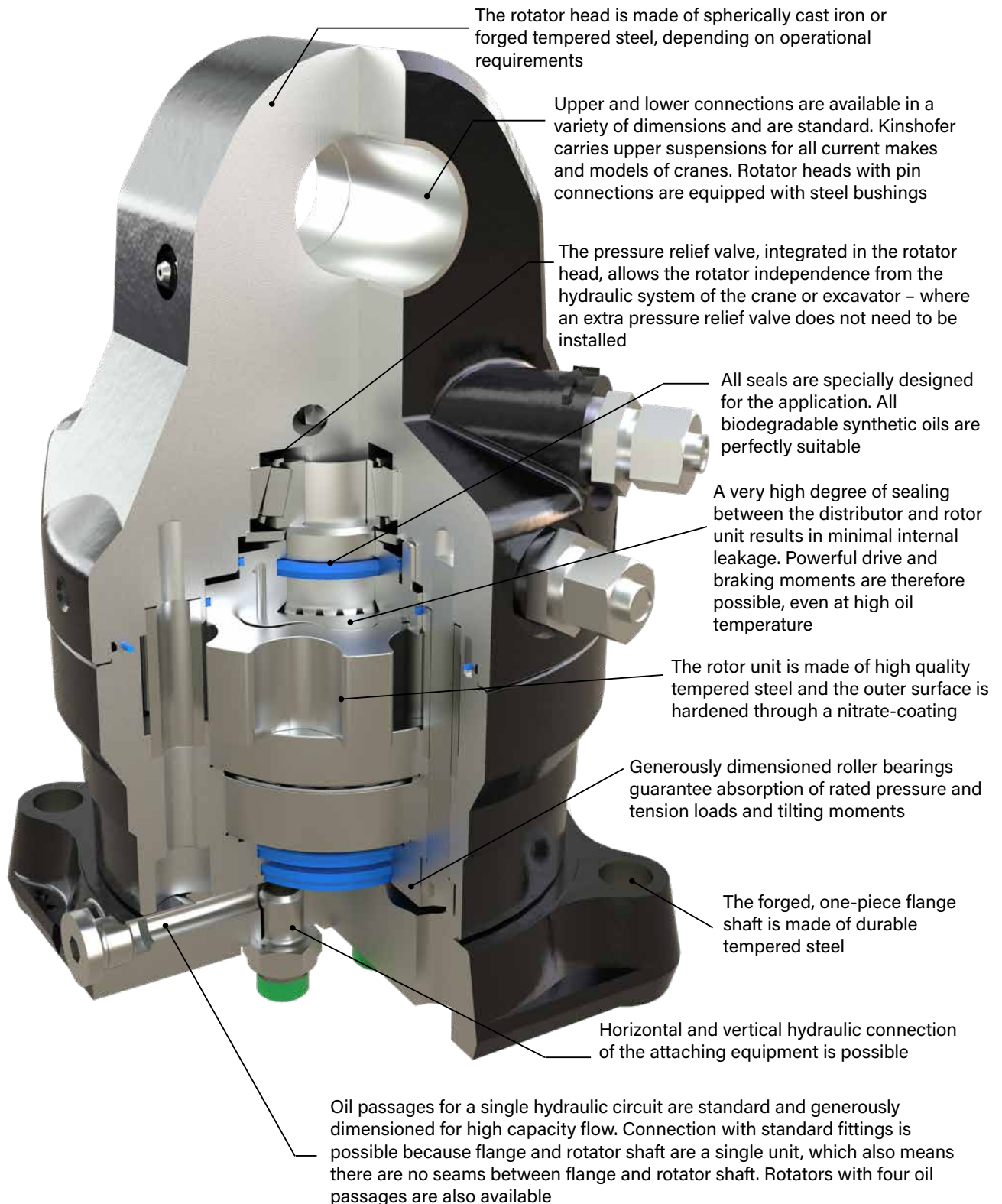
The gear-type design ensures a very compact and powerful rotator. The precision control and braking ability is especially appreciated by operators. A grapple does not rotate unexpectedly when digging, even under maximum load, and there is no need for stability compensation when handling longer lengths of timber...

These are only some of the many working situations where operators appreciate the advantages of using **KINSHOFER**-rotators.

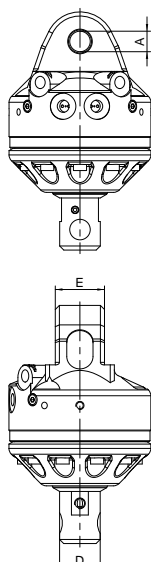
KINSHOFER-Rotators are the solution.



Features of the KINSHOFER-Rotators



Rotator with shaft up to 3000 kg load capacity (incl. fittings)



KM 03 S

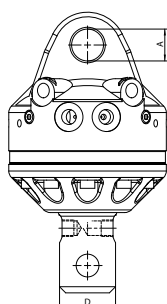
Type

Type	Load capacity (kg)	Shaft Ø D (mm)	Upper connection (Width E x Pin-Ø A) (mm)	Torque (Nm)	Moment of deflection max. (Nm)	Self weight (kg)
KM 03 S*	3000	49.5	60 x 25	450	1750	24

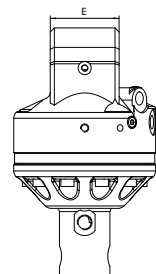
* only for pallet forks

Operating pressure:	max. 37 MPa (370 bar)
Oil flow rotate:	max. 40 l/min
Oil flow feedthrough:	max. 75 l/min
Hydraulic coupling in:	G 3/8"
Hydraulic coupling out:	G 1/4"

Rotators with shaft up to 4500 kg load capacity (incl. fittings)



KM 04 S



KM 04 S69-30

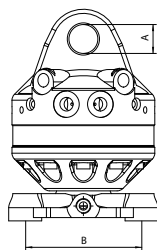
Type

Type	Load capacity (kg)	Shaft Ø D (mm)	Upper connection (Width E x Pin-Ø A) (mm)	Torque (Nm)	Moment of deflection max. (Nm)	Self weight (kg)
KM 04 S59-30	4500	59	84 x 30	850	3000	26
KM 04 S	4500	62	84 x 30	850	3000	26
KM 04 S63-30	4500	63	84 x 30	850	3000	26
KM 04 S68-30	4500	68	84 x 30	850	3000	26
KM 04 S68-30US*	4500	68	84 x 30	1000	4500	28
KM 04 S69-30	4500	69	84 x 30	850	3000	26

* steel motor-head

Operating pressure:	max. 37 MPa (370 bar)
Oil flow rotate:	max. 40 l/min
Oil flow feedthrough:	max. 75 l/min
Hydraulic coupling:	G 1/2"

Rotators with flange up to 4500 kg load capacity (incl. fittings)



KM 04 F



KM 04 F

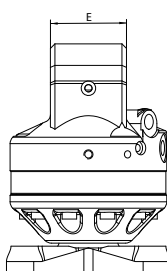
Type

Type	Load capacity (kg)	Hole pattern of flange B (mm)	Upper connection (Width E x Pin-Ø A) (mm)	Torque (Nm)	Moment of deflection max. (Nm)	Self weight (kg)
KM 04 F	4500	□ 140	84 x 30	850	3000	26
KM 04 F140-30US*	4500	□ 140	84 x 30	1000	8500	31
KM 04 F140-30V**	4500	□ 140	84 x 30	850	3000	26

* steel motor-head

** additional vertical connection

Operating pressure:	max. 37 MPa (370 bar)
Oil flow rotate:	max. 40 l/min
Oil flow feedthrough:	max. 75 l/min
Hydraulic coupling:	M18 x 1,5



KM 04 F140-30US

Product Features

KINSHOFER-Rotator Line

Rotators with shaft up to 6000 kg load capacity (incl. fittings)

Type	Load capacity (kg)	Shaft Ø D (mm)	Upper connection (Width E x Pin-Ø A)	Torque (Nm)	Moment of deflection max. (Nm)	Self weight (kg)
KM 06 S68-40	6000	68	84 x 40	1000	4500	32
KM 06 S69-40	6000	69	84 x 40	1000	4500	32

Operating pressure:	max. 37 MPa (370 bar)
Oil flow rotate:	max. 40 l/min
Oil flow feedthrough:	max. 75 l/min
Hydraulic coupling in:	G 1/2"
Hydraulic coupling out:	M18 x 1,5



KM 06 S68-40

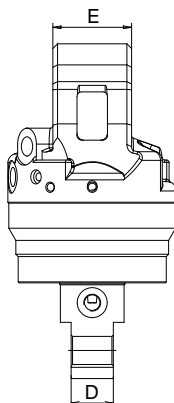
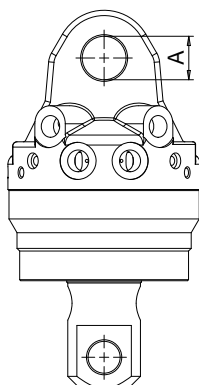
Rotator with flange up to 6000 kg load capacity (incl. fittings)

Type	Load capacity (kg)	Hole pattern of flange B (mm)	Upper connection (Width E x Pin-Ø A)	Torque (Nm)	Moment of deflection max. (Nm)	Self weight (kg)
KM 06 F140-40	6000	□ 140	84 x 40	1000	8500	34

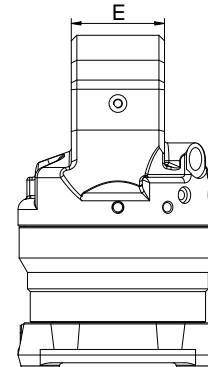
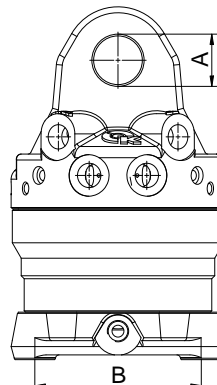
Operating pressure:	max. 37 MPa (370 bar)
Oil flow rotate:	max. 40 l/min
Oil flow feedthrough:	max. 75 l/min
Hydraulic coupling in:	G 1/2"
Hydraulic coupling out:	M18 x 1,5



Technical drawings



KM 06 S68-40 / KM 06 S69-40



KM 06 F140-40

Rotators with flange and 4 oil ducts to operate 2 different functions (incl. fittings)



KM 06 F173-35-4

Type	Load capacity (kg)	Hole pattern of flange B (mm)	Upper connection (Width E x Pin-Ø A) (mm)	Torque (Nm)	Hydraulic couplings	Moment of deflection max. (Nm)	Self weight (kg)
KM 04 F140-30-4	4500	□ 140	84 x 30	850	M 18 x 1,5	3000	40
KM 06 F173-35-4	6000	Ø 173	81 x 35	1000	G 1/2"	8500	45
KM 10 F173-35-2/4	10000	Ø 173	81 x 35	2000	G 1/2" & G 3/4"	12000	72

	KM 04 F / KM 06 F	KM 10 F
Operating pressure:	max. 37 MPa (370 bar)	max. 37 MPa (370 bar)
Oil flow rotate:	max. 40 l/min	max. 50 l/min
Oil flow feedthrough:	max. 75 l/min	max. 75 l/min

Rotators with flange for logging (incl. hose guard and fittings)

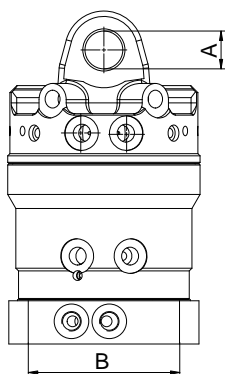


KM 10 F173-45

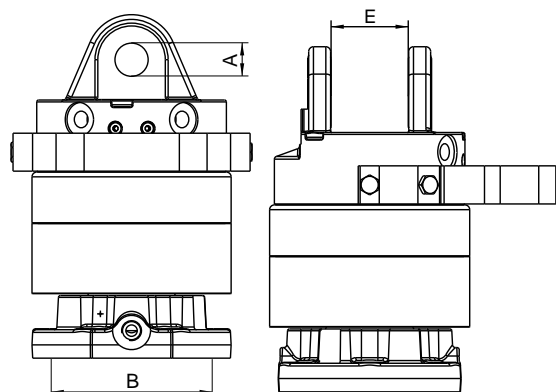
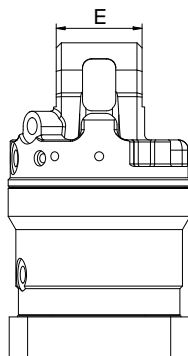
Type	Load capacity (kg)	Hole pattern of flange B (mm)	Upper connection (Width E x Pin-Ø A) (mm)	Torque (Nm)	Moment of deflection max. (Nm)	Self weight (kg)
KM 06 F173-35	6000	Ø 173	81 x 35	1000	8500	45
KM 10 F173-35/1	10000	Ø 173	81 x 35	2000	12000	62
KM 10 F173-35/2	10000	Ø 173	81 x 35	2000	12000	65
KM 10 F173-45	10000	Ø 173	100 x 45	2000	12000	68
KM 10 F173-52	10000	Ø 173	136 x 52,2	2000	12000	70

	KM 06 F	KM 10 F
Operating pressure:	max. 37 MPa (370 bar)	max. 37 MPa (370 bar)
Oil flow rotate:	max. 40 l/min	max. 50 l/min
Oil flow feedthrough:	max. 75 l/min	max. 75 l/min
Hydraulic coupling:	G 1/2"	G 1/2"

Technical drawings



KM 04 F140-30-4



KM 10 F173-35/1

KM 501 - Upper suspension between rotator and crane

An upper suspension is a cardan link between rotator and crane. It is available for all current makes and models of cranes. Please specify dimensions when ordering.

Type	Load capacity (kg)	Self weight (approx. kg)
KM 501 (3000)	up to 3000	5
KM 501 (4500)	up to 4500	10
KM 501 (6000)	up to 6000	15
KM 501 (10,000)	up to 10000	25



KM 511 - Upper suspension with pendulum damper between rotator and crane

A pendulum damper reduces the horizontal swing of the attachment. It can also be retrofitted to an existing upper suspension.

Type	Load capacity (kg)	Self weight (approx. kg)
KM 511 (4500)	up to 4500	15
KM 511 (6000)	up to 6000	20
KM 511 (10,000)	up to 10000	30



KM 206 - Hose guard

The hose guard is a metal bow to be attached onto the rotator. It is designed to protect the hoses of the rotator from damage i.e. from protruding branches.

Type	Description	Self weight (approx. kg)
KM 206	hose guard for the rotator	3



KM 502 - Reduction link between rotator and grapple

A reduction link adapts a shaft type rotator to an attachment with a standard hole pattern for a flange (KM 502).

Type	Load capacity (kg)	Self weight (approx. kg)
KM 502 (3000)	up to 3000	2
KM 502 (4500)	up to 4500	3
KM 502 (6000)	up to 6000	4



KM 460 - Accessories for Attaching Pallet Forks with shaft rotator

Type	Description	Type of rotator	Weight (approx. kg)
KM 460 03 (KM 03 S)	rigid suspension link with pin for all	KM 03	8
KM 460 03 (KM 04 S)	KINSHOFER shaft-type rotators	KM 04	10
KM 460 08 (KM 03 S)	rigid hook for all	KM 03	8
KM 460 08 (KM 04 S)	KINSHOFER shaft rotators	KM 04	9
KM 460 04 (KM 04 S)	non-rotating swinging hook for all	KM 04	12
KM 460 04 (KM 06 S)	KINSHOFER shaft rotators	KM 06	15
KM 460 10	non-rotating swinging hook for all KINSHOFER flange rotators	KM 10 F173	25



KM 460 03



KM 460 04

KM 505 - Quick change system for shaft-type rotators up to 4000 kg load capacity

The quick change system enables an easy exchange between different attachments. The mechanical coupling and locking is achieved by the turning motion of the rotator. You simply disconnect the quick couplings and disengage the locking device manually. The upper element of the quick change system is available for all KM 04 - shaft rotators. The KM 505 system allows the easy exchange between pallet fork and brick stack grapple for example; not suitable for heavy duty work.



Type	Description	Hole pattern of flange (mm)	Self weight (kg)
KM 505	complete, incl. hydraulic couplings (KM 204 03)	4x Ø18 / □ 140	12
KM 505 01	upper element fitted to rotator incl. mobile and fixed parts		5
KM 204 01	mobile part of hydraulic quick coupling (2 pieces) for KM 505 01		
KM 505 02	lower element mounted to the attachment	4x Ø18 / □ 140	7
KM 505 03	rigid suspension link with non-rotating hook to connect to the KM 505 01		7
KM 505 05	distance ring between KM 505 and KM 461 universal fork		5



KM 505 01



KM 505 02



KM 505 03

KM 505 HD - Heavy duty quick change system for shaft-type rotators

The quick change system enables an easy exchange between different attachments. The mechanical coupling and locking is achieved by the turning motion of the rotator. You simply disconnect the quick couplings and disengage the locking device manually. The upper element of the heavy duty quick change system is available for the KINSHOFER shaft rotators KM 04 S68-30US or KM 06 S68-40. The KM 505 system allows the easy exchange between pallet fork and clamshell bucket for example; especially developed for the heavy duty task with clamshell buckets.



Type	Description	Hole pattern of flange (mm)	Self weight (kg)
KM 505 HD	complete, incl. hydraulic couplings (KM 204 03)	4x Ø18 / □ 140	18
KM 505 01 HD	upper element HD fitted to rotator incl. mobile and fixed parts		7
KM 204 01	mobile part of hydraulic quick coupling (2 pieces) for KM 505 01 HD		
KM 505 02 HD	lower element HD mounted onto attachment	4x Ø18 / □ 140	11
KM 505 03 HD	rigid suspension link with non-rotating hook to connect to the KM 505 01 HD		14
KM 505 05	distance ring between KM 505 HD and KM 461 universal fork		5



KM 505 01 HD



KM 505 02 HD



KM 505 03 HD

KM 203 - Connecting hoses / KM 204 - Hydraulic quick change kit for hoses

KM 203 01



Type	Description
KM 203 01	short connecting hoses between rotator and attachment with standard fittings M 18 x 1,5 (2 pieces)
KM 203 03	long connecting hoses between rotator and crane. Please specify dimensions (4 pieces)



KM 204 03

KM 204 01	mobile part of hydraulic quick coupling for hose (Ø 10 mm, 2 pieces)
KM 204 02	fixed part of hydraulic quick coupling for rotator (Ø 10 mm, 2 pieces)
KM 204 03	hydraulic quick change kit incl. mobile and fixed parts (2 pieces each) mounted with adapters to rotator