

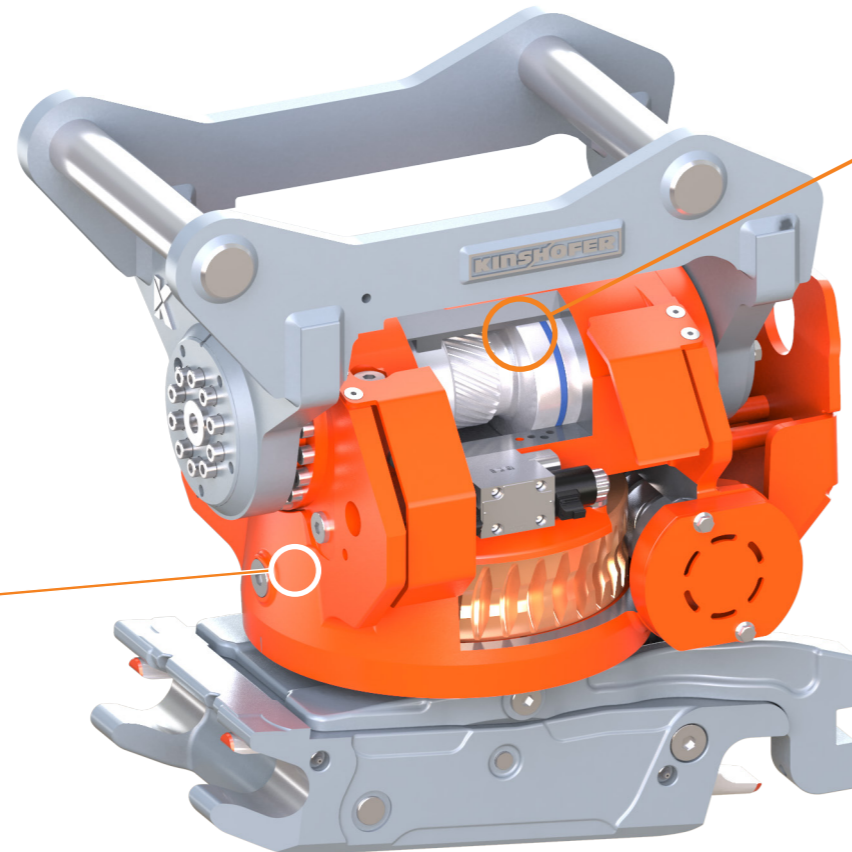
NOX Tiltrotator

SYSTEM: UPPER BRACKET & LOWER QUICK COUPLER

The Tiltrotator can be mounted directly to the excavator arm (direct mount) or it can be "Sandwich" mounted to the excavator by a quick coupler. Preferably, the excavator coupler is the same as the lower quick coupler on the NOX Tiltrotator, but it is not necessarily required. The Tiltrotator can thus be uncoupled and coupled again in no time. The lower quick coupler allows for a safe and fast exchange between attachments. Switching fully hydraulically between hydraulic attachments is no problem with the SmartFlow coupler system.

DESIGN: SELF-CONTAINED UNIT

The compact design with its fully integrated tilt and rotation unit provides highest safety against damage. There are no protruding cylinders or piston rods that can be damaged, increasing the reliability of the NOX. In addition, the low design maintains higher breakout forces of the machine.



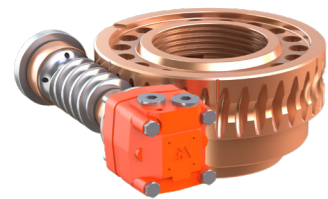
SET-UP: COMPACT DESIGN

The cylinderless, extremely low and narrow built drive unit allows for very narrow bucket width, that are usually not wider than the excavator boom. Therefore, digging down in deep trenches becomes possible and very easy.

SAFETY: SAFE WORKING AREA

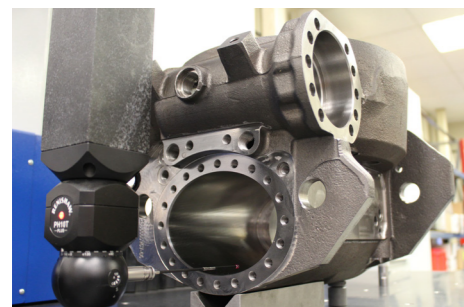


The increased working radius reduces the need for repositioning your excavator to a minimum. Manual works such as manual digging in the danger zone by a co-worker are not necessary, as these works can be managed from the excavator cabin with the NOX Tiltrotator. The S-Lock quick coupler with front-lock prevents the attachments from falling down unintendedly.



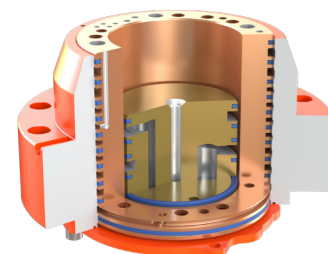
WORM DRIVE

The oversized worm gear absorbs shock loads with ease. The compact diameter and yet high torque ensures a very slim design, hence keeps the overall width of the NOX extremely small.



HOUSING

The robust cast housing features a high stability due to a special material alloy, guaranteeing a long life even under the toughest conditions. The integrated motor cover protects the hydraulic motor of the worm drive from damage from below. The quality of our precision components is ensured by 3D coordinate measuring machines with tactile and optical measuring sensors.



HIGH-FLOW SWIVEL

The optional high-flow swivel provides industry leading flows for attachments that require more flow to operate properly. As an option, an electric rotary unit for quick coupler sensors and attachments with switch valve (mainly in railway construction) can be used.

INTEGRATED GRIPPER TRG

With the integrated gripper you get an additional attachment for handling poles, tubes and curb stones.

The gripper is integrated at the lower quick coupler and does not affect the height or the attachment cross-movement.

RAILROAD GRIPPER RR-TRG

The RR-TRG gripper has been designed especially for heavy duty tasks, such as gripping railroad sleepers or rails. The extremely strong gripper module has been constructed for efficient gripping at a 40° angle. The gripper unit can be removed quickly and easily.



NOX Benefits

FLEXIBLE OPERATION

Fast and uncomplicated response to requirements to be more competitive.

HIGHER SAFETY

Manual works within the danger area are reduced to a minimum.

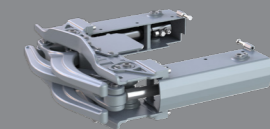
LESS WEAR

The compact and extremely robust design without hydraulic cylinders lowers the risk of damages.

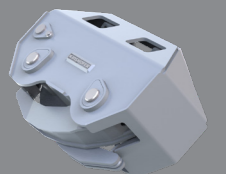
HIGHER EFFICIENCY

Working more efficiently saves consumables and labor costs and reduces the required working times. The tasks can thus be finished faster and the wear is kept to a minimum.

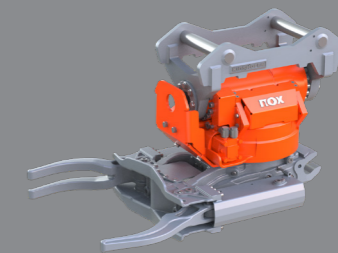
Optional accessories



TRG gripper



RR-TRG gripper



Type	Opening	Closing time	Closing force	Capacity
TRG07	424 mm	1,5 sec.	7,5 kN	300 kg
TRG11	644 mm	1,5 sec.	10 kN	500 kg
TRG19	734 mm	3,0 sec.	18,5 kN	900 kg
TRG25	1100 mm	2,0 sec.	19,5 kN	1400 kg
RR-TRG	822 mm	3,9 sec.	30,1 kN	5000 kg

The RR-TRG gripper is only available for TR19NOX and TR25NOX.