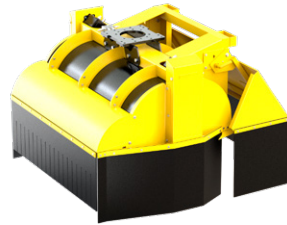


The SKB-Ballast Brush is the perfect excavator-tool for levelling and distributing ballast. Cleaning the track after filling it up with ballast has never been easier - for road rail excavators from 14t - 24t / 30800 - 52800 lbs operating weight.

Especially efficient in combination with a **nox** tiltrotator. Available for loaders as well.



- ▷ **Wide range of widths:** 1000 - 3000 mm / 39.37 - 118.11 in available, sweep diameter is 950 mm / 37.40 in.
- ▷ **Efficiency:** can be equipped with different brushes for different applications. The same frame can be used for different roller brushes
- ▷ Optional: **synthetic brush for snow removal** available.
- ▷ **Rubber bristles** sweep away ballast without damaging rails or sleepers.
- ▷ **Optional: Robust rubber skirts** avoid unintended spreading of the ballast.
- ▷ **Two hydraulic motors** (both bidirectional: forward & backward).

Ballast Brush SKB-Ballast

Type	Bristle length (mm/in)	Sweep diameter (mm/in)	Weight (kg/lbs)	Width (mm/in)	Height (mm/in)	Depth (mm/in)
SKB-Ballast 10	330 / 13	950 / 37.4	280 / 616	1000 / 39.4	1200 / 47.2	1200 / 47.2
SKB-Ballast 15	330 / 13	950 / 37.4	350 / 770	1500 / 59.1	1200 / 47.2	1200 / 47.2
SKB-Ballast 20	330 / 13	950 / 37.4	380 / 836	2000 / 78.7	1200 / 47.2	1200 / 47.2
SKB-Ballast 26	330 / 13	950 / 37.4	420 / 924	2600 / 102.4	1200 / 47.2	1200 / 47.2
SKB-Ballast 30	330 / 13	950 / 37.4	475 / 1045	3000 / 118.1	1200 / 47.2	1200 / 47.2

Package consists of: ballast brush, short hoses, rubber skirts

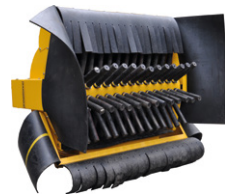
Accessories

Type	Description
T650 rigid	bolt-on adapter for "Atlas" quick coupler T620

Note: for adapters see page 27



Exchangeable:
Rubber brush of the SKB-Ballast



SKB-Ballast with raised rubber skirt (optional)

Safer working on the track: a **SKB-Ballast** with complete rubber protection skirts (for DE, FR, GB; for US and NL only front skirts required)



The SKB-Ballast **without** protection skirts (in Scandinavia) shows better how the ballast brush works



Requirements of Excavator

One hydraulic circuit needed

Operating pressure
max. 20 MPa (200 bar) / 2880 psi

Recommended oil flow
60 - max. 200 l/min / 15.9 - max. 52.8 GPM